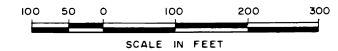


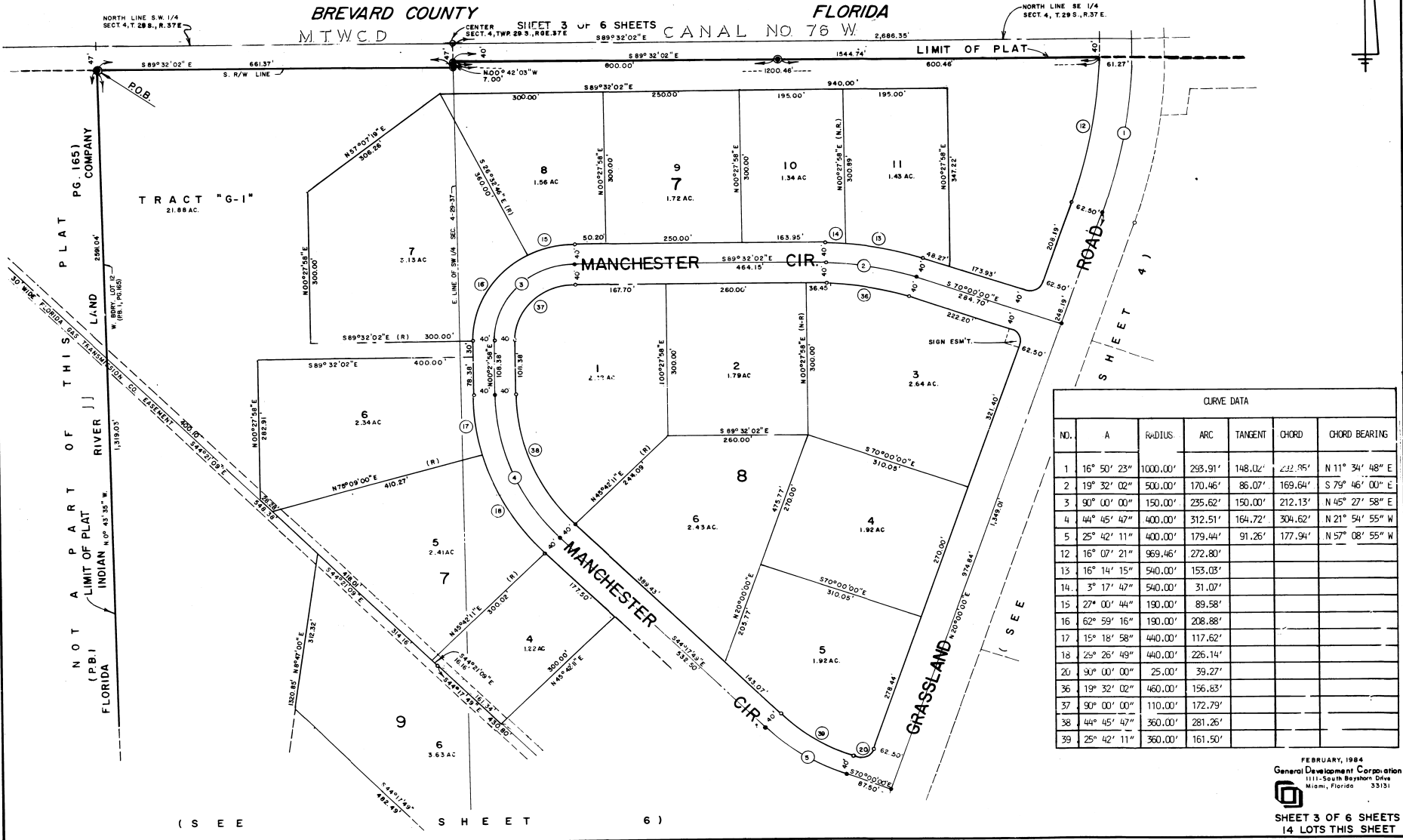


# PORT MALABAR INDUSTRIAL PARK UNIT TWO

PLAT BOOK 30  
AND PAGE 76



A REPLAT OF A PORTION OF FLORIDA INDIAN RIVER LAND COMPANY THEREOF RECORDED IN PLAT BOOK 1 AT PAGE 165 OF THE PUBLIC RECORDS OF BREVARD COUNTY, FLORIDA, LYING IN SECTIONS 4 AND 9, TOWNSHIP 29 SOUTH, RANGE 37 EAST CITY OF PALM BAY



CURVE DATA						
NO.	A	RADIUS	ARC	TANGENT	CHORD	CHORD BEARING
1	16° 50' 23"	1000.00'	295.91'	148.02'	232.95'	N 11° 34' 48" E
2	19° 32' 02"	500.00'	170.46'	86.07'	169.64'	S 79° 46' 00" E
3	90° 00' 00"	150.00'	235.62'	150.00'	212.13'	N 45° 27' 58" E
4	44° 45' 47"	400.00'	312.51'	164.72'	304.62'	N 21° 54' 55" W
5	25° 42' 11"	400.00'	179.44'	91.26'	177.94'	N 57° 08' 55" W
12	16° 07' 21"	969.46'	272.80'			
13	16° 14' 15"	540.00'	153.03'			
14	3° 17' 47"	540.00'	31.07'			
15	27° 00' 44"	190.00'	89.58'			
16	62° 59' 16"	190.00'	208.88'			
17	15° 18' 58"	440.00'	117.62'			
18	25° 26' 49"	440.00'	226.14'			
20	90° 00' 00"	25.00'	39.27'			
36	19° 32' 02"	460.00'	156.83'			
37	90° 00' 00"	110.00'	172.79'			
38	44° 45' 47"	360.00'	281.26'			
39	25° 42' 11"	360.00'	161.50'			

DRAWN BY  
CAS  
CHECKED BY  
CDC  
APPROVED BY

( S E E S H E E T 6 )

FEBRUARY, 1984  
General Development Corporation  
1111 South Bayshore Drive  
Miami, Florida 33131  
SHEET 3 OF 6 SHEETS  
14 LOTS THIS SHEET

PM,IP-2