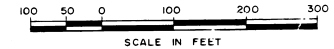


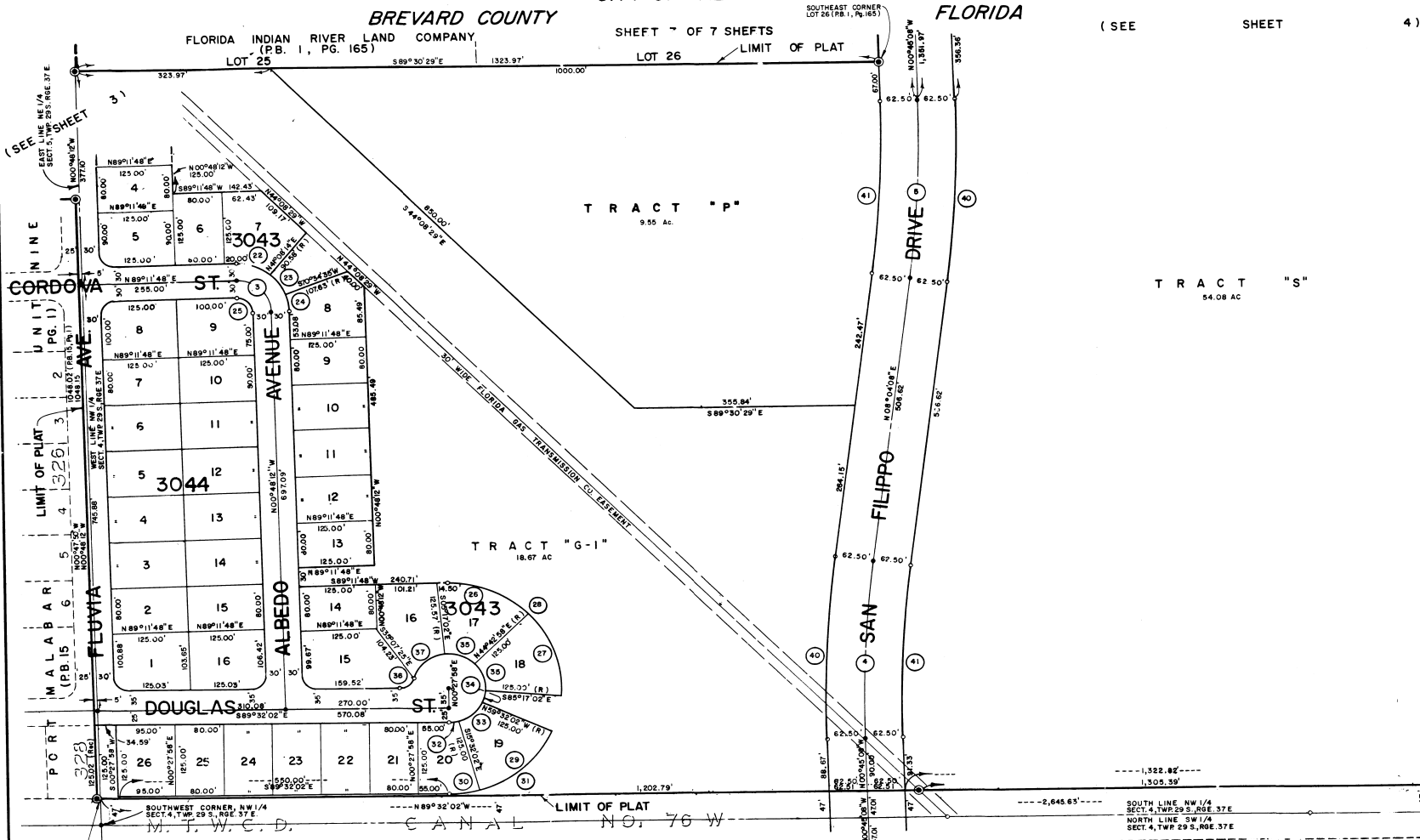


PORT MALABAR UNIT FIFTY SEVEN

PLAT BOOK 30
AND PAGE 13



A REPLAT OF A PORTION OF FLORIDA INDIAN RIVER LAND COMPANY THEREOF RECORDED IN PLAT BOOK 1 AT PAGE 165 OF THE PUBLIC RECORDS OF BREVARD COUNTY, FLORIDA, LYING IN SECTIONS 4 AND 5, TOWNSHIP 29 SOUTH, RANGE 37 EAST CITY OF PALM BAY



CURVE DATA

NO.	A	RADIUS	ARC	TANGENT	CHORD	CHORD BEARING	NO.	A	RADIUS	ARC	NO.	A	RADIUS	ARC	NO.	A	RADIUS	ARC
3.	.90° 00' 00"	.55.00'	.86.39'	.55.00'	.77.78'	S 45° 48' 12" E	26.	.45° 31' 10"	.185.00'	.146.98'	35.	.44° 00' 00"	.60.00'	.46.08'	40.	.8° 49' 16"	.2062.50'	.317.55'
4.	.8° 49' 16"	.2000.00'	.307.91'	.154.26'	.307.61'	S 3° 39' 30" W	27.	.50° 00' 00"	.185.00'	.161.44'	34.	.75° 45' 00"	.60.00'	.26.97'	41.	.8° 49' 16"	.1937.50'	.298.29'
5.	.8° 49' 16"	.2000.00'	.307.91'	.154.26'	.307.61'	S 3° 39' 30" W	28.	.95° 31' 10"	.185.00'	.308.42'	35.	.50° 00' 00"	.60.00'	.52.36'				
22.	.41° 56' 26"	.85.00'	.62.22'				29.	.44° 00' 00"	.185.00'	.142.07'	36.	.72° 53' 43"	.25.00'	.31.81'				
23.	.29° 26' 21"	.85.00'	.43.67'				30.	.16° 00' 00"	.185.00'	.51.66'	37.	.67° 08' 43"	.60.00'	.70.31'				
24.	.18° 37' 13"	.85.00'	.27.62'				31.	.60° 00' 00"	.185.00'	.193.73'	38.	.8° 49' 16"	.2062.50'	.317.53'				
25.	.90° 00' 00"	.25.00'	.39.27'				32.	.16° 00' 00"	.60.00'	.16.76'	39.	.8° 49' 16"	.1937.50'	.298.29'				

Drawn by *W. Johnson*
DRAWN BY
CAS
CHECKED BY
APPROVED BY

FEBRUARY, 1984
General Development Corporation
1111 South Bayview
Miami, Florida 33131

SHEET 7 OF 7 SHEETS
39 LOTS THIS SHEET

PM-57