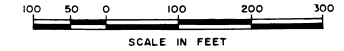




PORT MALABAR UNIT FIFTY SIX

PLAT BOOK 30
AND PAGE 64



A REPLAT OF A PORTION OF FLORIDA INDIAN RIVER LAND COMPANY THEREOF RECORDED IN PLAT BOOK 1 AT PAGE 165 OF THE PUBLIC RECORDS OF BREVARD COUNTY, FLORIDA, LYING IN SECTIONS 4, 5, 8, AND 9, TOWNSHIP 29 SOUTH, RANGE 37 EAST CITY OF PALM BAY

BREVARD COUNTY

FLORIDA

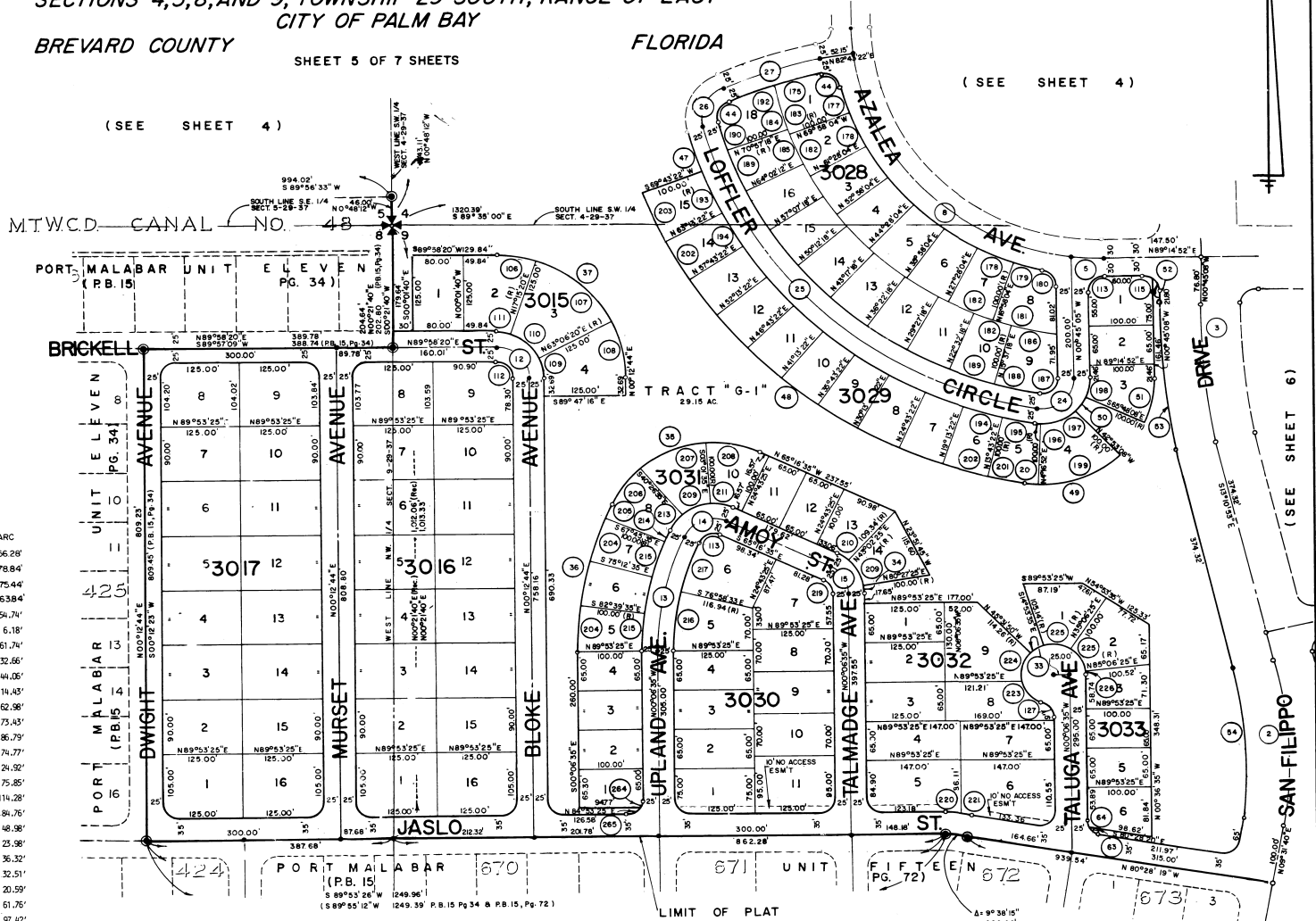
SHEET 5 OF 7 SHEETS

(SEE SHEET 4)

(SEE SHEET 4)

NO	A	RADIUS	ARC	TANGENT	CHORD	CHORD BEARING
2	22° 33' 35"	700.00'	275.61'	139.62'	275.84'	N 11° 45' 05" W
3	12° 16' 45"	1040.00'	222.89'	111.87'	222.46'	N 6° 53' 30" W
5	7° 27' 14"	385.00'	50.14'	24.11'	50.11'	N 87° 01' 16" W
6	90° 00' 00"	385.00'	604.76'	385.00'	544.77'	N 45° 45' 08" W
8	76° 00' 47"	385.00'	510.77'	300.86'	474.13'	N 45° 17' 01" W
9	6° 31' 30"	385.00'	43.84'	21.95'	43.82'	N 4° 00' 53" W
12	90° 14' 24"	50.00'	78.75'	50.21'	70.86'	S 44° 54' 28" E
13	24° 50' 00"	450.00'	195.04'	99.08'	195.52'	N 12° 18' 25" E
14	90° 00' 00"	50.00'	78.54'	50.00'	70.71'	N 69° 43' 25" E
15	65° 10' 00"	50.00'	56.82'	31.96'	53.86'	S 32° 41' 35" E
24	39° 26' 32"	50.00'	86.78'	59.00'	76.29'	S 49° 17' 07" W
25	67° 11' 30"	640.00'	750.54'	425.15'	708.26'	N 47° 23' 53" W
26	83° 28' 50"	50.00'	72.85'	46.61'	66.57'	N 27° 55' 07" E
27	13° 03' 00"	710.00'	161.71'	81.21'	161.36'	N 76° 11' 52" E
33	30° 38' 15"	50.00'	26.74'			
34	9° 26' 00"	75.00'	12.35'			
35	90° 00' 00"	175.00'	274.89'			
36	24° 50' 00"	575.00'	249.22'			
37	90° 14' 24"	200.00'	315.00'			
44	83° 28' 30"	25.00'	36.42'			
47	6° 28' 30"	665.00'	75.15'			
48	60° 43' 00"	765.00'	810.67'			
49	51° 53' 30"	175.00'	158.49'			
50	22° 55' 00"	75.00'	30.00'			
51	24° 57' 00"	175.00'	76.21'			
52	53° 07' 48"	25.00'	23.18'			
53	12° 16' 45"	1102.50'	236.28'			
54	22° 33' 35"	637.50'	251.00'			
63	53° 07' 48"	25.00'	23.18'			
64	27° 13' 56"	25.00'	11.88'			
106	17° 17' 00"	200.00'	60.33'			
107	45° 51' 00"	200.00'	160.05'			
108	27° 16' 24"	200.00'	94.62'			
109	27° 06' 24"	75.00'	35.48'			
110	45° 51' 00"	75.00'	60.02'			
111	17° 17' 00"	75.00'	22.62'			
112	90° 14' 24"	25.00'	39.37'			
113	90° 00' 00"	25.00'	16.09'			
127	70° 31' 44"	25.00'	30.77'			
175	6° 27' 19"	685.00'	77.18'			
177	6° 13' 49"	415.00'	46.13'			
178	8° 30' 00"	415.00'	61.57'			
179	6° 35' 00"	415.00'	47.68'			
180	76° 51' 48"	25.00'	33.54'			
181	11° 20' 46"	515.00'	101.98'			
182	8° 30' 00"	515.00'	76.40'			
183	9° 29' 24"	515.00'	85.29'			
184	8° 30' 00"	515.00'	76.42'			
185	6° 55' 00"	515.00'	62.17'			
186	8° 00' 00"	515.00'	71.91'			
187	99° 45' 30"	25.00'	43.53'			
188	6° 36' 56"	615.00'	71.01'			
189	6° 55' 00"	615.00'	74.24'			

NO	A	RADIUS	ARC
190	5° 14' 34"	615.00'	56.28'
192	6° 35' 41"	685.00'	78.84'
193	6° 30' 00"	665.00'	75.44'
194	5° 30' 00"	665.00'	63.84'
195	4° 43' 00"	665.00'	54.74'
196	4° 43' 30"	75.00'	6.18'
197	47° 10' 00"	75.00'	61.74'
198	24° 57' 00"	75.00'	32.66'
199	47° 10' 00"	175.00'	144.06'
200	4° 43' 30"	175.00'	14.43'
201	4° 43' 00"	765.00'	62.98'
202	5° 30' 00"	765.00'	73.43'
203	6° 30' 00"	765.00'	86.79'
204	7° 27' 00"	755.00'	74.77'
205	2° 29' 00"	575.00'	24.92'
206	24° 50' 00"	175.00'	75.85'
207	37° 25' 00"	175.00'	114.28'
208	27° 45' 00"	175.00'	84.76'
209	37° 25' 00"	75.00'	48.98'
210	18° 19' 00"	75.00'	23.98'
211	27° 45' 00"	75.00'	36.32'
212	21° 54' 00"	75.00'	32.51'
214	2° 29' 00"	475.00'	20.59'
215	7° 27' 00"	475.00'	61.75'
216	13° 08' 03"	425.00'	37.42'
217	11° 41' 58"	425.00'	36.78'
219	65° 10' 00"	25.00'	28.43'
220	5° 49' 03"	235.00'	73.86'
221	3° 49' 12"	235.00'	15.67'
223	53° 25' 20"	50.00'	46.62'
224	61° 41' 09"	50.00'	53.83'
225	50° 00' 00"	50.00'	43.63'
227	4° 47' 00"	50.00'	4.17'
264	37° 44' 00"	2500'	16.46'
265	82° 16' 00"	2500'	22.81'



DRAWN BY

CHECKED BY

APPROVED BY

JANUARY, 1984
General Development Corporation
1111-South Bayshore Drive
Miami, Florida 33131

SHEET 5 OF 7 SHEETS
LOTS THIS SHEET

PM-56