

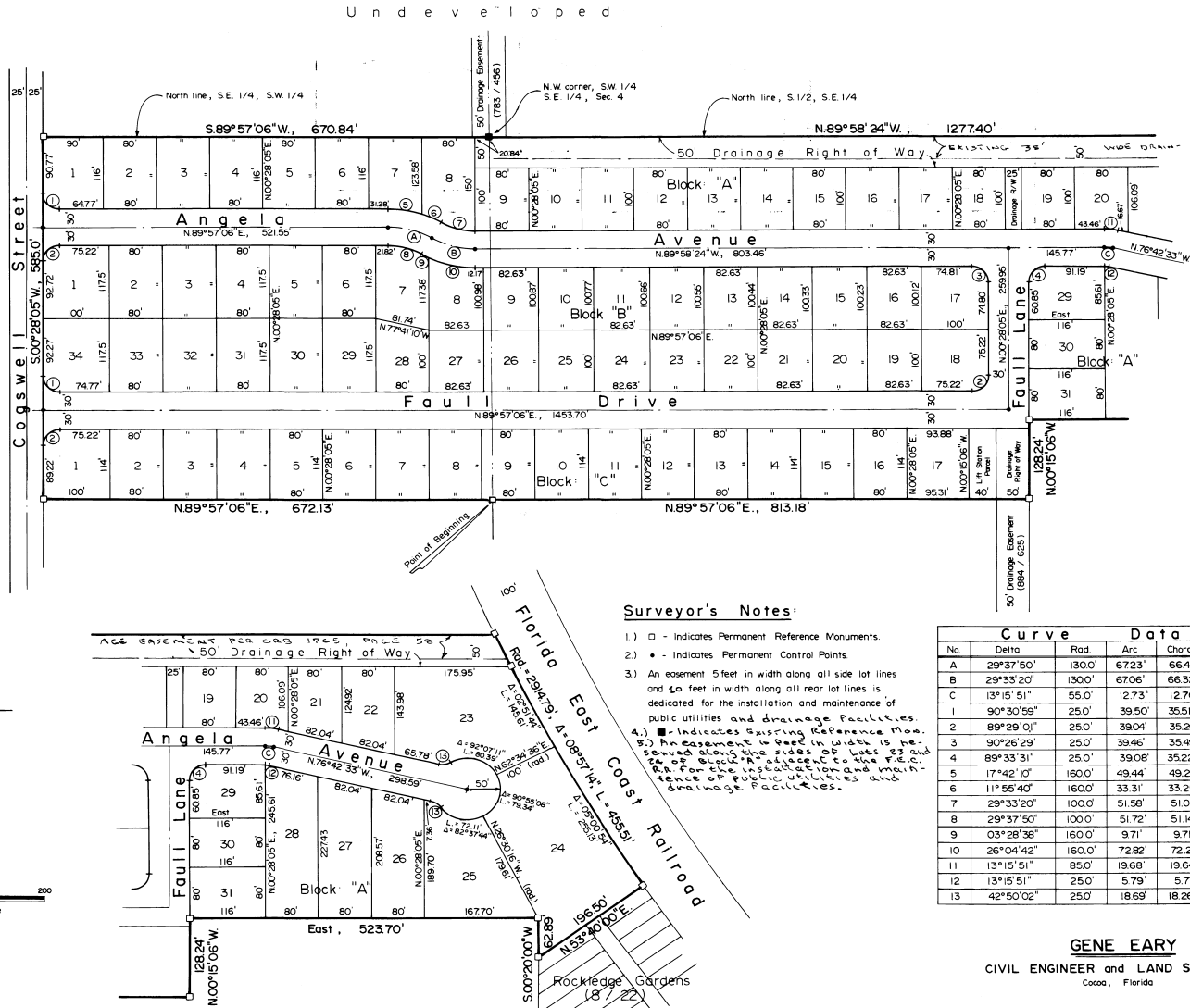
CASA ★ LOMA

A SUBDIVISION IN SECTION 4, TOWNSHIP 25 SOUTH, RANGE 36 EAST, CITY OF ROCKLEDGE, BREVARD COUNTY, FLORIDA.

DESCRIPTION

Commence at the Northwest corner of the Southwest 1/4 of the Southeast 1/4 of Section 4, Township 25 South, Range 36 East, thence S.00°20'30"W., 584.98 feet along the West line of the Southwest 1/4 of the Southeast 1/4 of said Section 4 to the Point of Beginning; thence N.89°57'06"E., 813.18 feet; thence N.00°15'06"W., 128.23 feet, thence East, 523.70 feet; thence S.00°20'00"W., 62.89 feet; thence N.53°40'00"E., 196.50 feet to a point on the West right of way line of the Florida East Coast Railroad, said point being on a curve concave to the Northeast and having a radius of 2914.79 feet, thence Northwestly 455.51 feet along said curve (through an angle of 08°57'14") to a point on the North line of the South 1/2 of Southeast 1/4 of said Section 4; thence N.89°58'24"W., 12774.0 feet along the said North line to the Northwest corner of Southwest 1/4 of Southeast 1/4 of said Section 4; thence S.89°57'06"W., 670.84 feet along the North line of the Southeast 1/4 of the Southwest 1/4 of said Section 4 to a point on the East right of way line of Cogswell Street; thence S.00°28'05"W., 585.0 feet along said East right of way line to a point; thence N.89°57'06"E., 672.13 feet to the Point of Beginning; containing 260.1 acres.

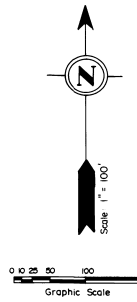
NOTE: Chapter 12, Dedication, D.C.B. 2443, pg. 2313



Surveyor's Notes:

- 1) □ - Indicates Permanent Reference Monuments.
 - 2) ● - Indicates Permanent Control Points.
 - 3) An easement 5 feet in width along all side lot lines and 10 feet in width along all rear lot lines is dedicated for the installation and maintenance of public utilities and drainage facilities.
- 4) ■ - Indicates Existing Reference Mon. 5) Measurements in feet in width is derived along the sides of lots and 6) For the installation and maintenance of public utilities and drainage facilities.

Curve Data					
No	Delta	Rad.	Arc	Chord	Tan.
A	29°37'50"	130.0'	6723'	6648'	34.38'
B	29°33'20"	130.0'	6706'	6632'	34.29'
C	13°15'51"	55.0'	1273'	1270'	6.39'
1	90°30'59"	25.0'	39.50'	35.51'	25.23'
2	89°29'01"	25.0'	39.04'	35.20'	24.78'
3	90°26'29"	25.0'	38.46'	35.49'	25.19'
4	89°33'31"	25.0'	39.08'	35.22'	24.81'
5	17°42'10"	160.0'	49.44'	49.24'	24.92'
6	11°55'40"	160.0'	33.31'	33.25'	16.71'
7	29°33'20"	100.0'	51.58'	51.01'	26.38'
8	29°37'50"	100.0'	51.72'	51.14'	26.45'
9	03°28'38"	160.0'	9.71'	9.71'	4.86'
10	26°04'42"	160.0'	72.82'	72.20'	37.05'
11	13°15'51"	85.0'	19.68'	19.64'	9.88'
12	13°15'51"	25.0'	5.79'	5.77'	2.91'
13	42°50'02"	25.0'	18.69'	18.26'	9.81'



GENE EARY
CIVIL ENGINEER and LAND SURVEYOR
Cocoa, Florida

PLAT BOOK 30
AND PAGE 8

DEDICATION

KNOW ALL MEN BY THESE PRESENTS, That the Corp. named below, being the owner in fee simple of the lands described in Casa Loma hereby dedicates said lands and plat for the uses and purposes therein expressed and dedicates all roads, streets, alleys, thoroughfares, parks, canals, drainage easements, utility easements, lakes, pathways, open spaces and other rights of way, easements shown hereon to the perpetual use of the public, and the City of Rockledge, IN WITNESS WHEREOF, was caused these presents to be signed and attested to by the officers named below and its corporate seal to be affixed hereto on this 27th day of August, 1985. By: *Gene Eary*, President
Attest: *John J. Crater*, Secretary
Signed and sealed in the presence of: *John J. Crater*, Secretary

STATE OF Florida, County of Brevard
THIS IS TO CERTIFY, That on August 27, 1985, before me, an officer duly authorized to take acknowledgments in the State and County aforesaid, personally appeared *Gene Eary*, President of Casa Loma, and *John J. Crater*, Secretary of Casa Loma, and they acknowledged to me the foregoing Dedication and severally acknowledged that the official seal of said corporation is duly affixed thereto and that said Dedication is the act and deed of said corporation.

IN WITNESS WHEREOF, I have hereunto set my hand and seal on the above date.
John B. Starn
NOTARY PUBLIC
My Commission Expires June 6, 1985

CERTIFICATE OF SURVEYOR
KNOW ALL MEN BY THESE PRESENTS, That the undersigned, being a licensed and registered land surveyor, does hereby certify that on October 27, 1985, he completed and filed for record a plat of the lands as shown in the foregoing plat; that said plat is a correct representation of the lands therein described and platted; that permanent reference monuments have been placed as shown therein as required by Chapter 177, Florida Statutes; and that said lands lie within Brevard County, Florida. Dated: *October 27, 1985*
Gene Eary, Registration No. 2759

CERTIFICATE OF APPROVAL BY MUNICIPALITY
THIS IS TO CERTIFY, That on September 7, 1985, the City Council of the City of Rockledge, Florida, approved the foregoing plat.
John J. Crater, Mayor
Richard Hamilton, City Clerk

CERTIFICATE OF ACCEPTANCE OF DEDICATION BY BOARD OF COUNTY COMMISSIONERS
THIS IS TO CERTIFY That the Board of County Commissioners hereby accepts all roads, streets, alleys, thoroughfares, parks, canals, drainage easements, utility easements, lakes, pathways, open spaces and other rights of way, easements and areas dedicated for public use on this plat.
Chairman of the Board
Attest: *John J. Crater*, Clerk of the Board

CERTIFICATE OF APPROVAL BY BOARD OF COUNTY COMMISSIONERS
THIS IS TO CERTIFY, That on *October 27, 1985*, the foregoing plat was approved by the Board of County Commissioners of Brevard County, Florida.
Chairman of the Board
Attest: *John J. Crater*, Clerk of the Board
Approved: *Gene Eary*, County Engineer

CERTIFICATE OF APPROVAL BY PLANNING AND ZONING COMMISSION
THIS IS TO CERTIFY, That on *October 27, 1985*, the Zoning Commission of the above *Gene Eary* approved the foregoing plat.
Planning and Zoning Director
CERTIFICATE OF CLERK
I HEREBY CERTIFY, That I have examined the foregoing plat and find that it complies in form with all the requirements of Chapter 177, Florida Statutes, and was filed for record on *October 27, 1985* at *2:50 PM*, File No. *807759*
R.C. Winters, Clerk of the Circuit Court in and for Brevard County, Fla.