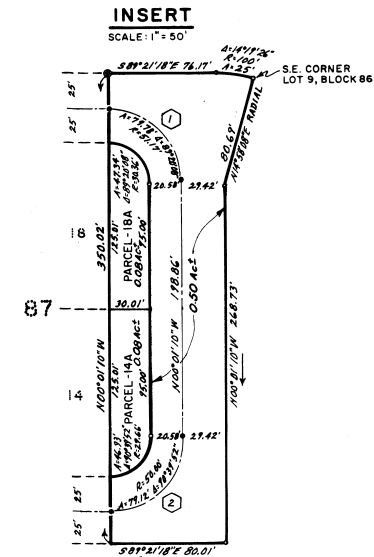
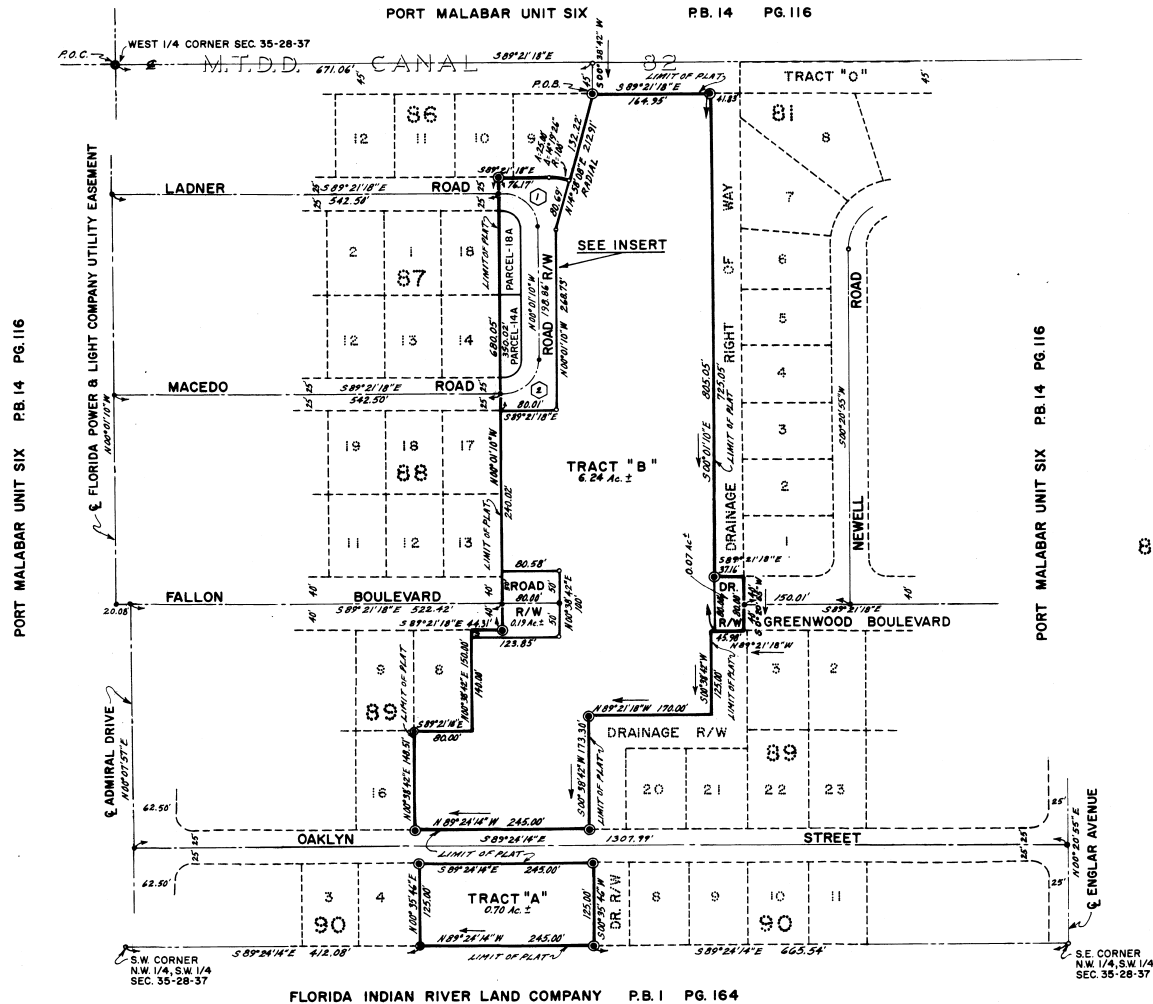
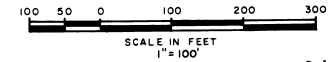


FIRST REPLAT IN PORT MALABAR UNIT SIX

A RESUBDIVISION OF A PORTION OF "PORT MALABAR UNIT SIX", PLAT BOOK 14, PAGE 116
SECTION 35, TOWNSHIP 28 SOUTH, RANGE 37 EAST
CITY OF PALM BAY
BREVARD COUNTY, FLORIDA.
SHEET 2 OF 2 SHEETS

PLAT BOOK 29
AND PAGE 94



FLORIDA INDIAN RIVER LAND COMPANY P.B. 1 PG. 164

CENTERLINE OF STREET CURVE DATA

ID	RADIUS (FT.)	CENTRAL ANGLE DEG-MIN-SEC.	ARC (FT.)	TANGENT (FT.)	CHORD (FT.)	CHORD BEARING DEG-MIN-SEC.
1	51.17	89-20-08	79.78	50.58	71.95	N 44-41-14 W
2	50.00	90-39-52	79.12	50.58	71.12	N 45-18-46 E

CALCULATED BY ERG
DRAWN BY BJS
CHECKED BY GLP
APPROVED BY KEM

GENERAL DEVELOPMENT ENGINEERING COMPANY
Port St. Lucie Florida

SHEET 2 OF 2 SHEETS
0 LOTS THIS SHEET

PM-6-R1