

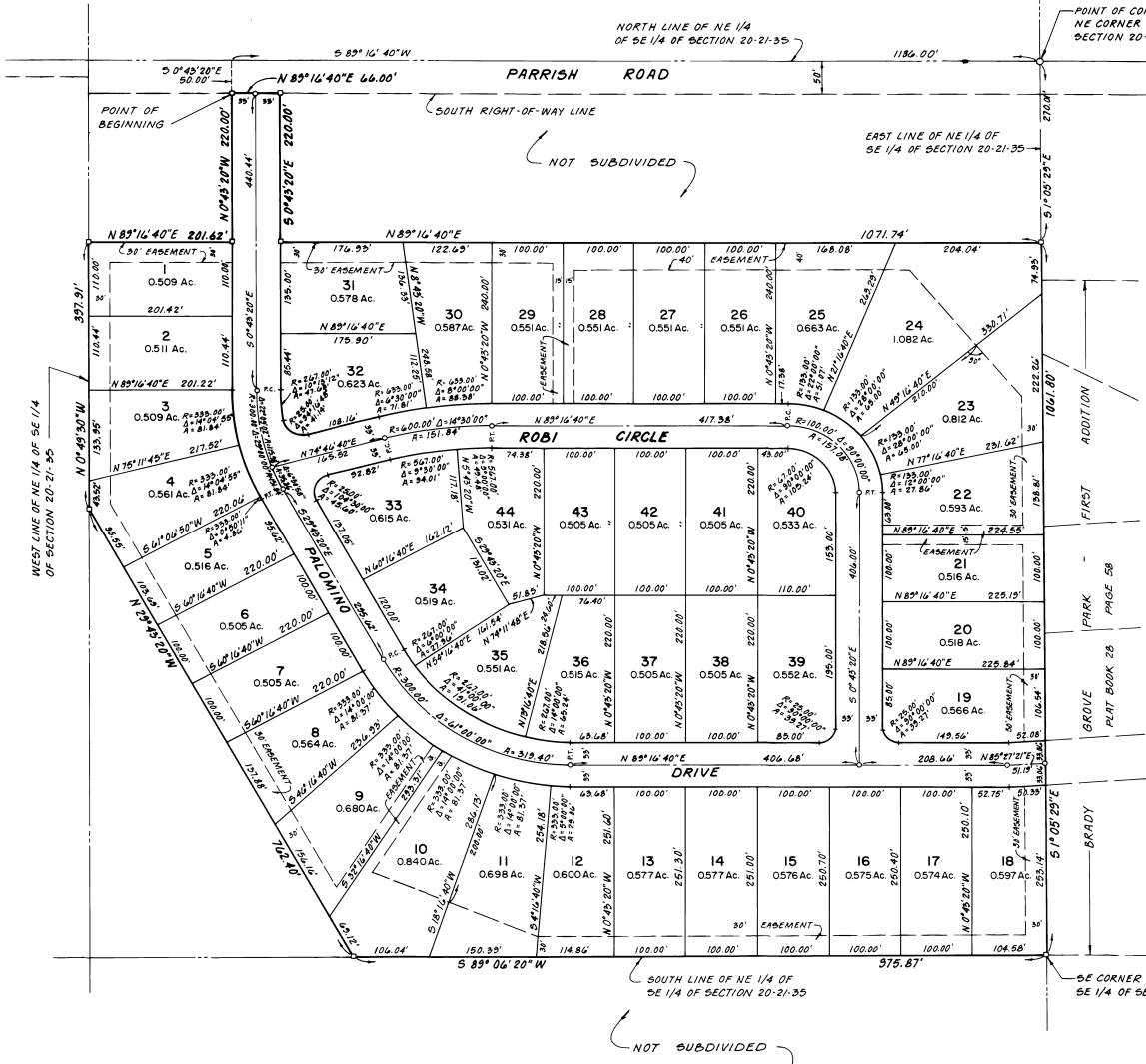
BRADY GROVE PARK - SECOND ADDITION

BREVARD COUNTY, FLORIDA

A PART OF THE NORTHEAST 1/4 OF THE SOUTHEAST 1/4 OF SECTION 20, TOWNSHIP 21, SOUTH, RANGE 35 EAST, BREVARD COUNTY, FLORIDA.

LEGAL DESCRIPTION:

COMMENCE AT THE NORTHEAST CORNER OF SAID NORTHEAST 1/4 OF THE SOUTHEAST 1/4 OF SECTION 20; RUN THENCE S 89°16'40"W ALONG THE NORTH LINE OF SAID NORTHEAST 1/4 OF THE SOUTHEAST 1/4, A DISTANCE OF 1186.00 FEET; THENCE S 0°43'20"E, 50.00 FEET TO A POINT ON THE SOUTH RIGHT-OF-WAY LINE OF PARRISH ROAD AND THE POINT OF BEGINNING OF THE LANDS HEREIN DESCRIBED; THENCE N 89°16'40"E ALONG SAID SOUTH RIGHT-OF-WAY LINE, 66.00 FEET; THENCE S 0°43'20"E, 220.00 FEET; THENCE N 89°16'40"E, 1071.74 FEET TO A POINT ON THE EAST LINE OF SAID NORTHEAST 1/4 OF THE SOUTHEAST 1/4; THENCE S 1°05'29"E ALONG SAID EAST LINE, 1061.80 FEET TO THE SOUTHEAST CORNER OF SAID NORTHEAST 1/4 OF THE SOUTHEAST 1/4; THENCE S 89°06'20"W ALONG THE SOUTH LINE OF SAID NORTHEAST 1/4 OF THE SOUTHEAST 1/4, 375.87 FEET; THENCE N 89°43'20"W, 762.40 FEET TO A POINT ON THE WEST LINE OF SAID NORTHEAST 1/4 OF THE SOUTHEAST 1/4; THENCE N 0°43'30"W ALONG SAID WEST LINE, 397.31 FEET; THENCE N 89°16'40"E, 201.62 FEET; THENCE N 0°43'20"W, 220.00 FEET TO THE POINT OF BEGINNING. CONTAINING 30.27 ACRES MORE OR LESS.



SURVEYOR'S NOTES:

1. □ INDICATES PERMANENT REFERENCE MONUMENT SET.
2. ○ INDICATES PERMANENT CONTROL POINT.
3. BEARINGS SHOWN HEREON ARE BASED UPON BRADY GROVE PARK - FIRST ADDITION, PLAT BOOK 28, PAGE 58.
4. EASEMENTS SHOWN HEREON ARE FOR DRAINAGE AND PUBLIC UTILITIES PURPOSES.
5. ALL LOTS HAVE 7.5 FEET INTERIOR SIDE, REAR AND FRONT LOT LINE EASEMENTS FOR DRAINAGE AND PUBLIC UTILITIES PURPOSES, UNLESS OTHERWISE SHOWN.
6. THE TERM "PUBLIC UTILITIES" INCLUDES FLORIDA POWER AND LIGHT COMPANY.

FOR DECLARATION OF RESTRICTIONS SEE ORB 2395 PAGE 2936

prepared by: LOYS WARD AND COMPANY
TITUSVILLE, FLORIDA

PLAT BOOK 29
AND PAGE 91

DEDICATION

KNOW ALL MEN BY THESE PRESENTS, That the Corporation named below, being the owner in fee simple of the lands described hereon known as BRADY GROVE PARK - SECOND ADDITION

hereby dedicates said lands and plat for the uses and purposes therein expressed and dedicates the streets, alleys, thoroughfares, parks, canals and drainage easements shown hereon to the perpetual use of the public, and IN WITNESS WHEREOF, has caused these presents to be signed and attested to by its officers named below and its corporate seal to be hereunto affixed, this 12th day of JULY, 1982.
By *John R. Holley*, President and Secretary
Attest: *John W. Lippert*, Secretary
Signed and sealed in the presence of *John W. Lippert*

STATE OF FLORIDA COUNTY OF BREVARD
THIS IS TO CERTIFY, That on before me, an officer duly authorized to take acknowledgments in the State and County aforesaid, personally appeared Robt. K. Roberts, President and Secretary of the above named corporation incorporated under the laws of the State of FLORIDA, to me known to be the individuals and officers described in and who executed the foregoing Dedication and severally acknowledged the execution thereof to be their free act and deed as such officers thereunto duly authorized; and that the official seal of said corporation is duly affixed thereto; and that the said Dedication is the act and deed of said corporation.
IN WITNESS WHEREOF, I have hereunto set my hand and seal on the above date.
John R. Holley
NOTARY PUBLIC
My Commission Expires February 3, 1984

CERTIFICATE OF SURVEYOR
KNOW ALL MEN BY THESE PRESENTS, That the undersigned, being a licensed and registered land surveyor, does hereby certify that on APRIL 14, 1982, he completed his survey of the lands as shown in the foregoing plat that said plat is a correct representation of the lands therein described and plotted; that permanent reference monuments have been placed as shown; mention is required by Chapter 177, Florida Statutes; and that said land is located in Brevard County, Florida. Dated JULY 12, 1982.
John R. Holley
Registration No. 2396

CERTIFICATE OF APPROVAL BY MUNICIPALITY
THIS IS TO CERTIFY, That on _____ the _____ approved the foregoing plat.
ATTEST: _____ MAYOR.

CITY CLERK.

CERTIFICATE OF ACCEPTANCE OF DEDICATION BY BOARD OF COUNTY COMMISSIONERS
THIS IS TO CERTIFY That the Board of County Commissioners hereby accepts all roads, streets, alleys, thoroughfares, parks, canals, drainage easements, utility easements, lakes, pathways, open spaces and other rights of way, easements and areas dedicated for public use on this plat.
John W. Lippert
Chairman of the Board
ATTEST: *John W. Lippert*
Clerk of the Board

CERTIFICATE OF APPROVAL BY BOARD OF COUNTY COMMISSIONERS
THIS IS TO CERTIFY, That on AUGUST 12, 1982, the foregoing plat was approved by the Board of County Commissioners of Brevard County, Florida.
John W. Lippert
Chairman of the Board
ATTEST: *John W. Lippert*
Clerk of the Board
John W. Lippert
County Engineer

CERTIFICATE OF APPROVAL BY PLANNING AND ZONING COMMISSION
THIS IS TO CERTIFY, That on AUGUST 10, 1982, the Zoning Commission of the above named County approved the foregoing plat.
John W. Lippert
Planning and Zoning Director

CERTIFICATE OF CLERK
I HEREBY CERTIFY, That I have examined the foregoing plat and find that it complies in every detail all the requirements of Chapter 177, Florida Statutes, and was filed for record on JUNE 16, 1982, at 3:47 P.M., 1982.
John W. Lippert
Clerk of the Circuit Court
in and for Brevard County, Fla.