

FOX LAKE MANOR - SECTION FOUR

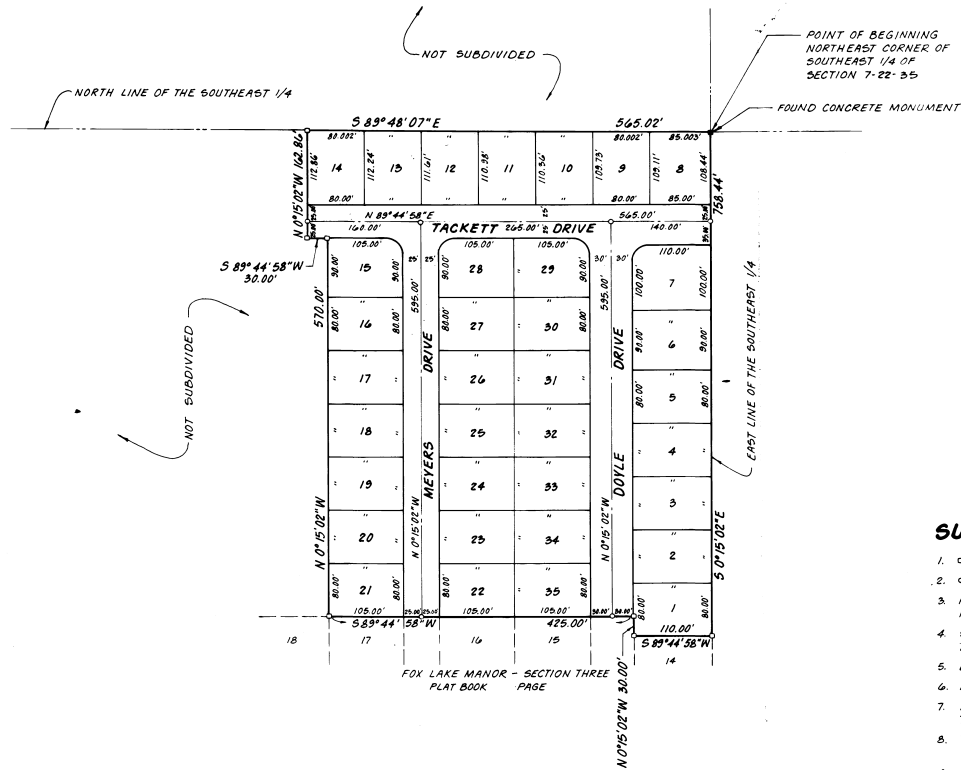
CITY OF TITUSVILLE, BREVARD COUNTY, FLORIDA

A PART OF THE SOUTHEAST 1/4 OF SECTION 7, TOWNSHIP 22 SOUTH, RANGE 35 EAST, BREVARD COUNTY, FLORIDA.

LEGAL DESCRIPTION:

BEGIN AT THE NORTHEAST CORNER OF THE SOUTHEAST 1/4 OF SECTION 7, TOWNSHIP 22 SOUTH, RANGE 35 EAST, BREVARD COUNTY, FLORIDA; RUN THENCE S 0°15'02"E ALONG THE EAST LINE OF SAID SOUTHEAST 1/4, A DISTANCE OF 758.44 FEET TO A POINT ON THE NORTHERLY BOUNDARY OF FOX LAKE MANOR - SECTION THREE AS RECORDED IN PLAT BOOK 29 AT PAGE 27 OF THE PUBLIC RECORDS OF BREVARD COUNTY, FLORIDA; RUN THENCE WESTERLY ALONG SAID NORTHERLY BOUNDARY THE FOLLOWING THREE COURSES AND DISTANCES: S 89°44'58"W, 110.00 FEET; N 0°15'02"W, 30.00 FEET; S 89°44'58"W, 425.00 FEET; THENCE RUN N 0°15'02"W, 570.00 FEET; THENCE S 89°44'58"W, 30.00 FEET; THENCE N 0°15'02"W, 162.84 FEET TO A POINT ON THE NORTH LINE OF THE AFORESAID SOUTHEAST 1/4 OF SECTION 7; THENCE S 89°48'07"E ALONG SAID NORTH LINE, 545.02 FEET TO THE POINT OF BEGINNING.

CONTAINING 35 LOTS AND 3.160 ACRES MORE OR LESS.



SURVEYOR'S NOTES:

1. □ DENOTES PERMANENT REFERENCE MONUMENT.
2. ○ DENOTES PERMANENT CONTROL POINT.
3. ROAD RIGHTS-OF-WAY MAY BE USED FOR THE INSTALLATION AND MAINTENANCE OF PUBLIC UTILITIES.
4. 5 FOOT PUBLIC UTILITY EASEMENTS ARE RESERVED CONTIGUOUS TO ALL INTERIOR SIDE AND REAR LOT LINES.
5. BEARINGS SHOWN HEREON ARE BASED UPON ASSUMED DATUM.
6. RADII ON ALL CORNER LOTS ARE 25 FEET UNLESS OTHERWISE SHOWN.
7. DISTANCES SHOWN ON CORNER LOTS ARE TO THE INTERSECTION OF THE RIGHT-OF-WAY LINES EXTENDED.
8. THE TERM "PUBLIC UTILITY" INCLUDES FLORIDA POWER AND LIGHT COMPANY.
9. 8 FOOT PUBLIC UTILITY EASEMENTS ARE RESERVED CONTIGUOUS TO STREET RIGHT-OF-WAY LINES, ON EACH LOT.

Restrictions - see OR 2435 pg. 2015

prepared by: LOYS WARD AND COMPANY
TITUSVILLE, FLORIDA

PLAT BOOK 29
AND PAGE 89

DEDICATION

KNOW ALL MEN BY THESE PRESENTS, That the Corporation named below, being the owner in fee simple of the lands described hereon to be known as FOX LAKE MANOR - SECTION FOUR

hereby dedicates said lands and plat for the uses and purposes therein expressed and dedicates all roads, streets, alleys, thoroughfares, parks, canals, drainage easements, utility easements, lakes, pathways, open spaces and other rights of way, easements shown hereon for the perpetual use of the public, and

IN WITNESS WHEREOF, I, the undersigned, have caused these presents to be read and attested to by the officer, named below and his seal to be affixed hereto on October 16, 1981.

ARIES CONSTRUCTION OF MID-FLORIDA, INC.
P.O. BOX 38
DELTONA, FLORIDA 32735

BY: *Willard Clay Alexander, Jr.*
WILLARD CLAY ALEXANDER, JR.
PRESIDENT & SECRETARY

STATE OF FLORIDA COUNTY OF BREVARD
THIS IS TO CERTIFY, That on before me, an officer duly authorized to take acknowledgments in the State and County aforesaid, personally appeared WILLARD CLAY ALEXANDER, JR. President and Secretary of the above named corporation incorporated under the laws of the State of FLORIDA, to me known to be the individual and officer described in and who executed the foregoing Dedication and severally acknowledged the execution thereof to be his free act and deed as such officer; thereto duly authorized, that the act and deed of said corporation is duly affixed thereto; and that the said Dedication is the act and deed of said corporation.

IN WITNESS WHEREOF, I have hereto set my hand and seal on the above date.
Jan R. Holley
NOTARY PUBLIC
My Commission Expires February 3, 1984

CERTIFICATE OF SURVEY

KNOW ALL MEN BY THESE PRESENTS, That the undersigned, a duly licensed and registered land surveyor, does hereby certify that on May 23, 1981, I surveyed the lands as shown in the foregoing plat; that the representation of the lands therein described and the permanent reference monuments have been placed as required by Chapter 177, Florida Statutes; and that the survey was conducted in Brevard County, Florida, on October 16, 1981.

Willard Clay Alexander, Jr.
Registered Professional Land Surveyor

CERTIFICATE OF APPROVAL

BY MUNICIPALITY
THIS IS TO CERTIFY, That on May 24, 1983, the Board of City Commissioners of Titusville, Florida, approved the foregoing plat.

ATTEST:
Janet L. Comacho
CITY CLERK

CERTIFICATE OF ACCEPTANCE OF DEDICATION

BY BOARD OF COUNTY COMMISSIONERS
THIS IS TO CERTIFY, That the Board of County Commissioners hereby accepts of roads, streets, alleys, thoroughfares, parks, canals, drainage easements, utility easements, lakes, pathways, open spaces and other rights of way, easements and areas dedicated for public use on this plat.

ATTEST:
Chairman of the Board

Clerk of the Board

CERTIFICATE OF APPROVAL BY BOARD OF COUNTY COMMISSIONERS

THIS IS TO CERTIFY, That on the foregoing plat was approved by the Board of County Commissioners of Brevard County, Florida.

ATTEST:
Chairman of the Board
Clerk of the Board
Approved
County Engineer

CERTIFICATE OF APPROVAL BY PLANNING AND ZONING COMMISSION

THIS IS TO CERTIFY, That on the foregoing plat was approved by the Planning and Zoning Commission of the above plat.

ATTEST:
I HEREBY CERTIFY, That I have examined the foregoing plat and that it complies in form with the Florida Statutes, and was filed at 3:03 PM, File No. 111111, on October 16, 1981.
R. E. Windley
Clerk of the Circuit Court in and for Brevard County, Fla.