

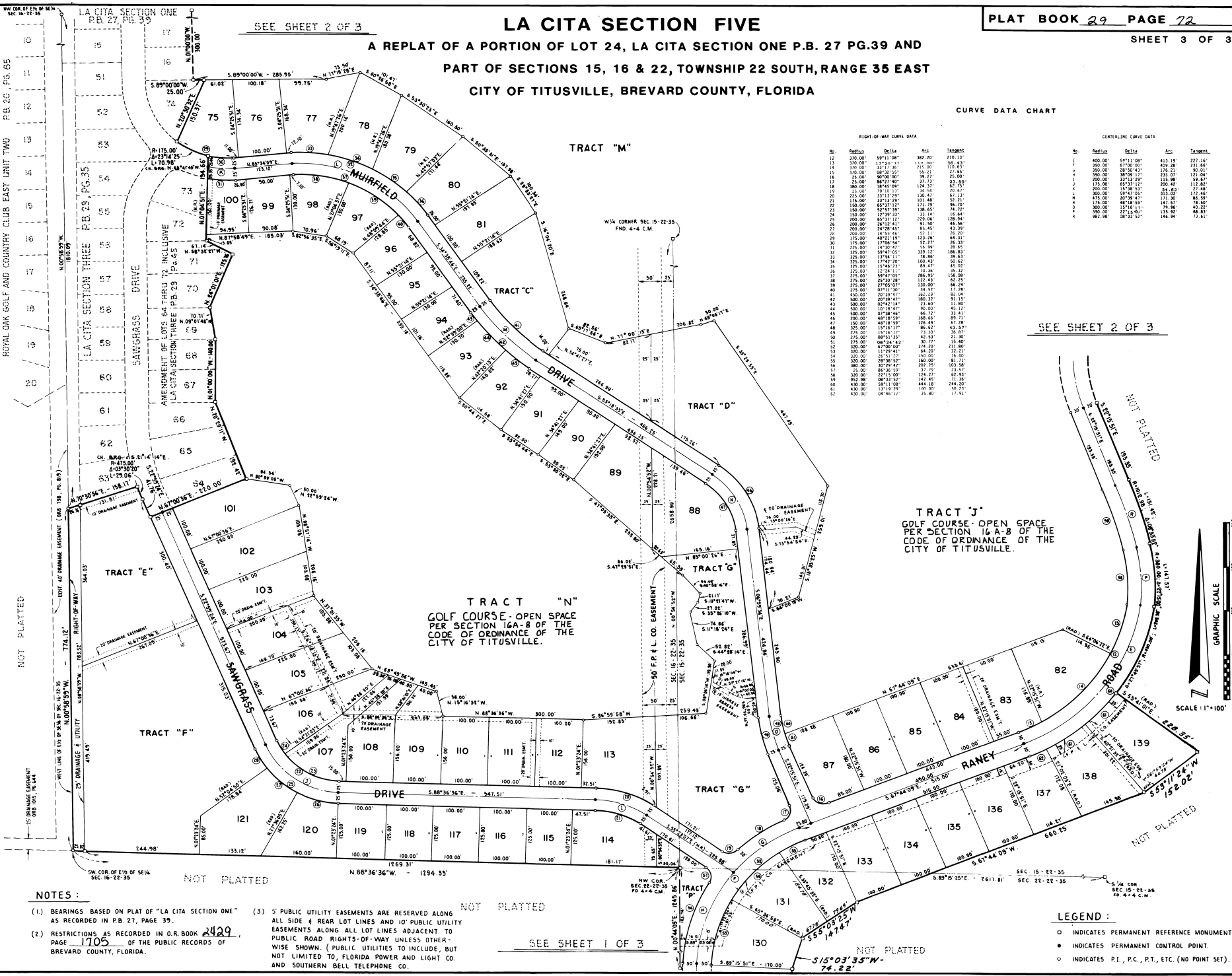
LA CITA SECTION FIVE

A REPLAT OF A PORTION OF LOT 24, LA CITA SECTION ONE P.B. 27 PG.39 AND PART OF SECTIONS 15, 16 & 22, TOWNSHIP 22 SOUTH, RANGE 35 EAST CITY OF TITUSVILLE, BREVARD COUNTY, FLORIDA

SEE SHEET 2 OF 3

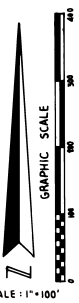
CURVE DATA CHART

RIGHT-OF-WAY CURVE DATA					CENTERLINE CURVE DATA				
No.	Radius	Delta	Arc	Tangent	No.	Radius	Delta	Arc	Tangent
1	370.00	147°11'08"	382.20	210.13	1	400.00	59°11'08"	413.19	227.16
2	370.00	131°20'13"	113.00	96.43	2	350.00	67°00'00"	420.28	231.64
3	370.00	317°17'30"	210.00	110.62	3	350.00	28°00'00"	276.23	26.01
4	370.00	08°30'55"	56.21	27.85	4	350.00	38°00'13"	233.07	121.04
5	370.00	00°00'00"	35.27	25.00	5	350.00	00°00'00"	0.00	0.00
6	370.00	00°00'00"	35.27	25.00	6	350.00	65°33'12"	200.42	112.82
7	370.00	00°00'00"	35.27	25.00	7	350.00	15°16'52"	24.82	12.42
8	370.00	00°00'00"	35.27	25.00	8	350.00	59°47'25"	311.07	170.46
9	370.00	00°00'00"	35.27	25.00	9	350.00	25°14'32"	174.20	86.59
10	370.00	00°00'00"	35.27	25.00	10	350.00	48°18'59"	147.57	78.50
11	370.00	00°00'00"	35.27	25.00	11	350.00	25°14'32"	174.20	86.59
12	370.00	00°00'00"	35.27	25.00	12	350.00	00°33'52"	146.94	72.81
13	370.00	131°20'13"	113.00	96.43	13	350.00	00°33'52"	146.94	72.81
14	370.00	317°17'30"	210.00	110.62	14	350.00	00°33'52"	146.94	72.81
15	370.00	08°30'55"	56.21	27.85	15	350.00	00°33'52"	146.94	72.81
16	370.00	00°00'00"	35.27	25.00	16	350.00	00°33'52"	146.94	72.81
17	370.00	00°00'00"	35.27	25.00	17	350.00	00°33'52"	146.94	72.81
18	370.00	00°00'00"	35.27	25.00	18	350.00	00°33'52"	146.94	72.81
19	370.00	00°00'00"	35.27	25.00	19	350.00	00°33'52"	146.94	72.81
20	370.00	00°00'00"	35.27	25.00	20	350.00	00°33'52"	146.94	72.81
21	370.00	00°00'00"	35.27	25.00	21	350.00	00°33'52"	146.94	72.81
22	370.00	00°00'00"	35.27	25.00	22	350.00	00°33'52"	146.94	72.81
23	370.00	00°00'00"	35.27	25.00	23	350.00	00°33'52"	146.94	72.81
24	370.00	00°00'00"	35.27	25.00	24	350.00	00°33'52"	146.94	72.81
25	370.00	00°00'00"	35.27	25.00	25	350.00	00°33'52"	146.94	72.81
26	370.00	00°00'00"	35.27	25.00	26	350.00	00°33'52"	146.94	72.81
27	370.00	00°00'00"	35.27	25.00	27	350.00	00°33'52"	146.94	72.81
28	370.00	00°00'00"	35.27	25.00	28	350.00	00°33'52"	146.94	72.81
29	370.00	00°00'00"	35.27	25.00	29	350.00	00°33'52"	146.94	72.81
30	370.00	00°00'00"	35.27	25.00	30	350.00	00°33'52"	146.94	72.81
31	370.00	00°00'00"	35.27	25.00	31	350.00	00°33'52"	146.94	72.81
32	370.00	00°00'00"	35.27	25.00	32	350.00	00°33'52"	146.94	72.81
33	370.00	00°00'00"	35.27	25.00	33	350.00	00°33'52"	146.94	72.81
34	370.00	00°00'00"	35.27	25.00	34	350.00	00°33'52"	146.94	72.81
35	370.00	00°00'00"	35.27	25.00	35	350.00	00°33'52"	146.94	72.81
36	370.00	00°00'00"	35.27	25.00	36	350.00	00°33'52"	146.94	72.81
37	370.00	00°00'00"	35.27	25.00	37	350.00	00°33'52"	146.94	72.81
38	370.00	00°00'00"	35.27	25.00	38	350.00	00°33'52"	146.94	72.81
39	370.00	00°00'00"	35.27	25.00	39	350.00	00°33'52"	146.94	72.81
40	370.00	00°00'00"	35.27	25.00	40	350.00	00°33'52"	146.94	72.81
41	370.00	00°00'00"	35.27	25.00	41	350.00	00°33'52"	146.94	72.81
42	370.00	00°00'00"	35.27	25.00	42	350.00	00°33'52"	146.94	72.81
43	370.00	00°00'00"	35.27	25.00	43	350.00	00°33'52"	146.94	72.81
44	370.00	00°00'00"	35.27	25.00	44	350.00	00°33'52"	146.94	72.81
45	370.00	00°00'00"	35.27	25.00	45	350.00	00°33'52"	146.94	72.81
46	370.00	00°00'00"	35.27	25.00	46	350.00	00°33'52"	146.94	72.81
47	370.00	00°00'00"	35.27	25.00	47	350.00	00°33'52"	146.94	72.81
48	370.00	00°00'00"	35.27	25.00	48	350.00	00°33'52"	146.94	72.81
49	370.00	00°00'00"	35.27	25.00	49	350.00	00°33'52"	146.94	72.81
50	370.00	00°00'00"	35.27	25.00	50	350.00	00°33'52"	146.94	72.81
51	370.00	00°00'00"	35.27	25.00	51	350.00	00°33'52"	146.94	72.81
52	370.00	00°00'00"	35.27	25.00	52	350.00	00°33'52"	146.94	72.81



SEE SHEET 2 OF 3

TRACT "J"
 GOLF COURSE - OPEN SPACE
 PER SECTION 16A-B OF THE
 CODE OF ORDINANCE OF THE
 CITY OF TITUSVILLE.



- NOTES:**
- (1) BEARINGS BASED ON PLAT OF "LA CITA SECTION ONE" AS RECORDED IN P.B. 27, PAGE 39.
 - (2) RESTRICTIONS AS RECORDED IN O.R. BOOK 2429, PAGE 1705 OF THE PUBLIC RECORDS OF BREVARD COUNTY, FLORIDA.
 - (3) 5' PUBLIC UTILITY EASEMENTS ARE RESERVED ALONG ALL SIDE & REAR LOT LINES AND 10' PUBLIC UTILITY EASEMENTS ALONG ALL LOT LINES ADJACENT TO PUBLIC ROAD RIGHTS-OF-WAY UNLESS OTHERWISE SHOWN. (PUBLIC UTILITIES TO INCLUDE, BUT NOT LIMITED TO, FLORIDA POWER AND LIGHT CO. AND SOUTHERN BELL TELEPHONE CO.)

- LEGEND:**
- INDICATES PERMANENT REFERENCE MONUMENT.
 - INDICATES PERMANENT CONTROL POINT.
 - INDICATES P.I., P.C., P.T., ETC. (NO POINT SET).

SEE SHEET 1 OF 3

NOT PLATTED