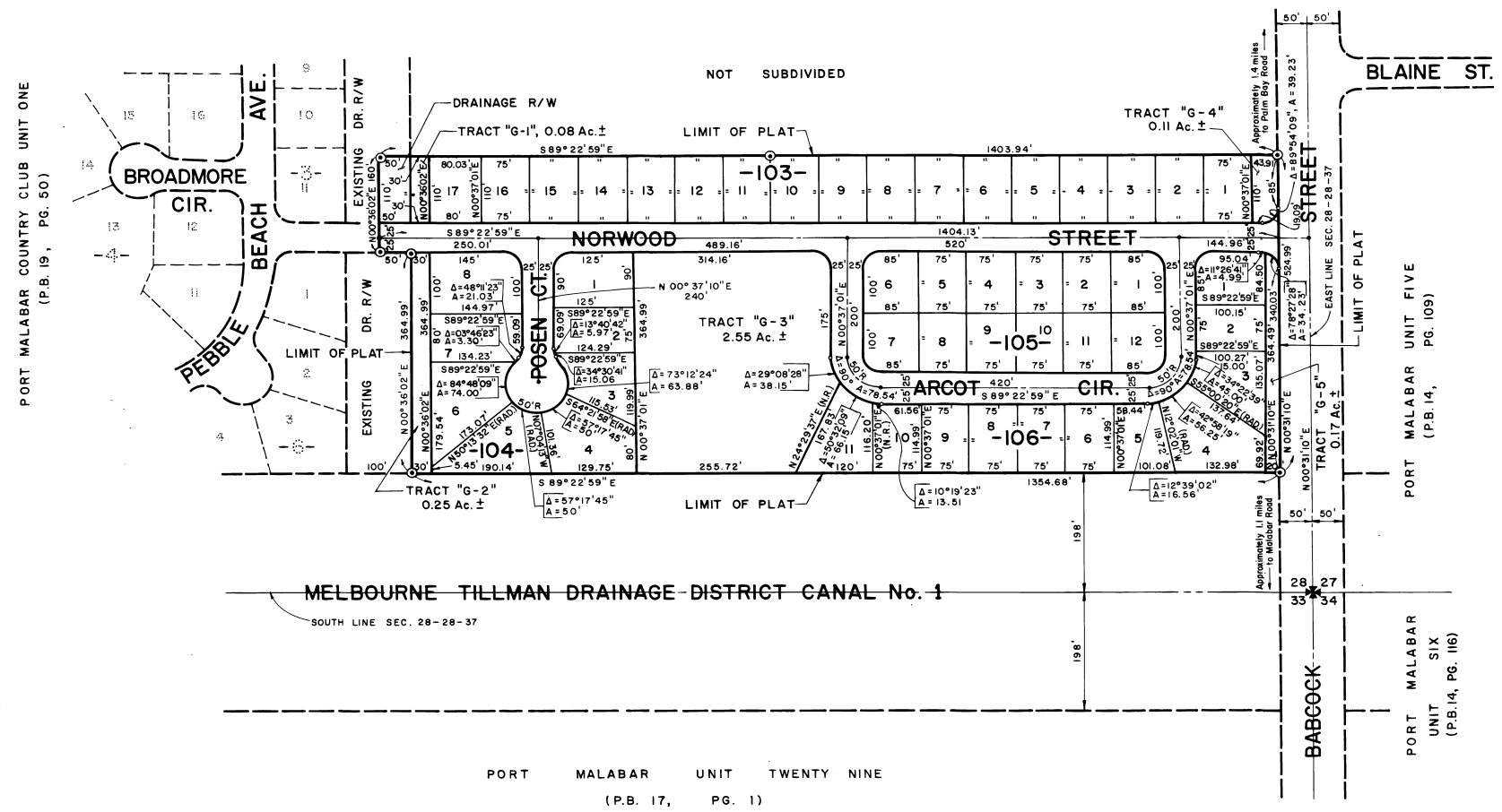
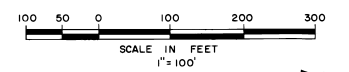


FIRST REPLAT IN PORT MALABAR COUNTRY CLUB UNIT ONE

A RESUBDIVISION OF TRACTS "C" AND "D" OF PORT MALABAR COUNTRY CLUB UNIT ONE (P.B.19,PG.50)
IN SECTION 28, TOWNSHIP 28 SOUTH, RANGE 37 EAST
CITY OF PALM BAY
BREVARD COUNTY, FLORIDA
SHEET 2 OF 2 SHEETS



CALCULATED BY A.F.
DRAWN BY W.W.
CHECKED BY
APPROVED BY

GENERAL DEVELOPMENT ENGINEERING COMPANY
1111 SOUTH BAYSHORE DRIVE MIAMI, FLORIDA
SHEET 2 OF 2 SHEETS
48 TOTAL NO. LOTS