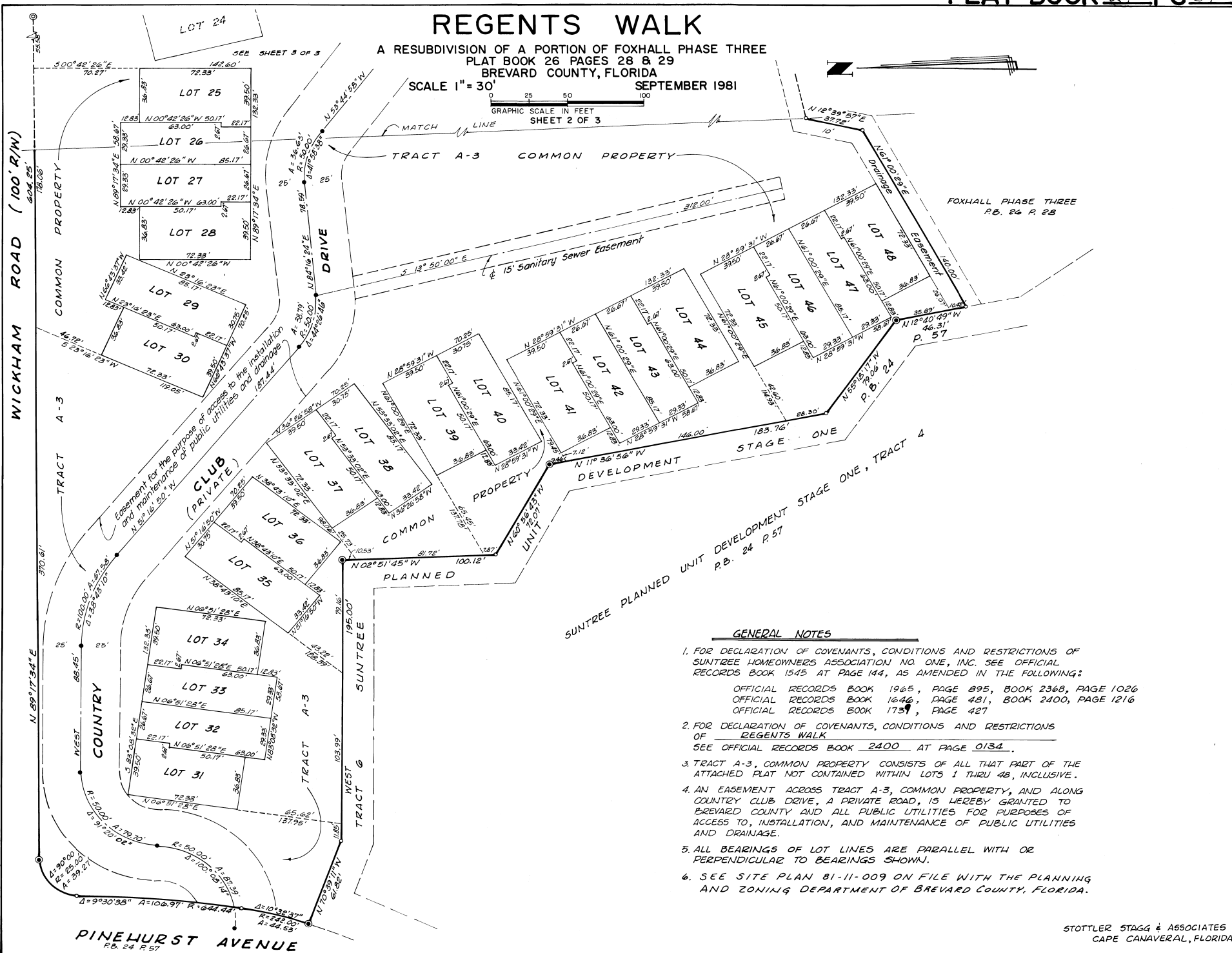


# REGENTS WALK

A RESUBDIVISION OF A PORTION OF FOXHALL PHASE THREE  
 PLAT BOOK 26 PAGES 28 & 29  
 BREVARD COUNTY, FLORIDA

SCALE 1" = 30' SEPTEMBER 1981



SUNTREE PLANNED UNIT DEVELOPMENT STAGE ONE, TRACT 4

**GENERAL NOTES**

1. FOR DECLARATION OF COVENANTS, CONDITIONS AND RESTRICTIONS OF SUNTREE HOMEOWNERS ASSOCIATION NO. ONE, INC. SEE OFFICIAL RECORDS BOOK 1545 AT PAGE 144, AS AMENDED IN THE FOLLOWING:  
 OFFICIAL RECORDS BOOK 1965, PAGE 895, BOOK 2368, PAGE 1026  
 OFFICIAL RECORDS BOOK 1646, PAGE 481, BOOK 2400, PAGE 1216  
 OFFICIAL RECORDS BOOK 1731, PAGE 427
2. FOR DECLARATION OF COVENANTS, CONDITIONS AND RESTRICTIONS OF REGENTS WALK  
 SEE OFFICIAL RECORDS BOOK 2400 AT PAGE 0134.
3. TRACT A-3, COMMON PROPERTY CONSISTS OF ALL THAT PART OF THE ATTACHED PLAT NOT CONTAINED WITHIN LOTS 1 THRU 48, INCLUSIVE.
4. AN EASEMENT ACROSS TRACT A-3, COMMON PROPERTY, AND ALONG COUNTRY CLUB DRIVE, A PRIVATE ROAD, IS HEREBY GRANTED TO BREVARD COUNTY AND ALL PUBLIC UTILITIES FOR PURPOSES OF ACCESS TO, INSTALLATION, AND MAINTENANCE OF PUBLIC UTILITIES AND DRAINAGE.
5. ALL BEARINGS OF LOT LINES ARE PARALLEL WITH OR PERPENDICULAR TO BEARINGS SHOWN.
6. SEE SITE PLAN 81-11-009 ON FILE WITH THE PLANNING AND ZONING DEPARTMENT OF BREVARD COUNTY, FLORIDA.

STOTTLER STAGG & ASSOCIATES  
 CAPE CANAVERAL, FLORIDA