

# REPLAT OF SHERWOOD FOREST P.U.D. II STAGE ONE, TRACT 'A'

BREVARD COUNTY, FLORIDA  
A PART OF THE NORTHEAST 1/4 AND  
THE NORTHWEST 1/4 OF SECTION 24,  
TOWNSHIP 21 SOUTH, RANGE 34 EAST

## LEGAL DESCRIPTION

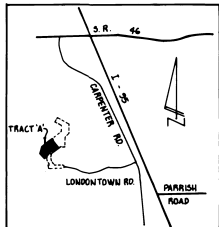
TRACT 'A', SHERWOOD FOREST P.U.D. II STAGE ONE, PLAT BOOK 29, PAGES 40-41  
AS RECORDED IN THE PUBLIC RECORDS OF BREVARD COUNTY, FLORIDA:  
CONTAINING 5.124 ACRES MORE OR LESS

### R/W LINE CURVE DATA

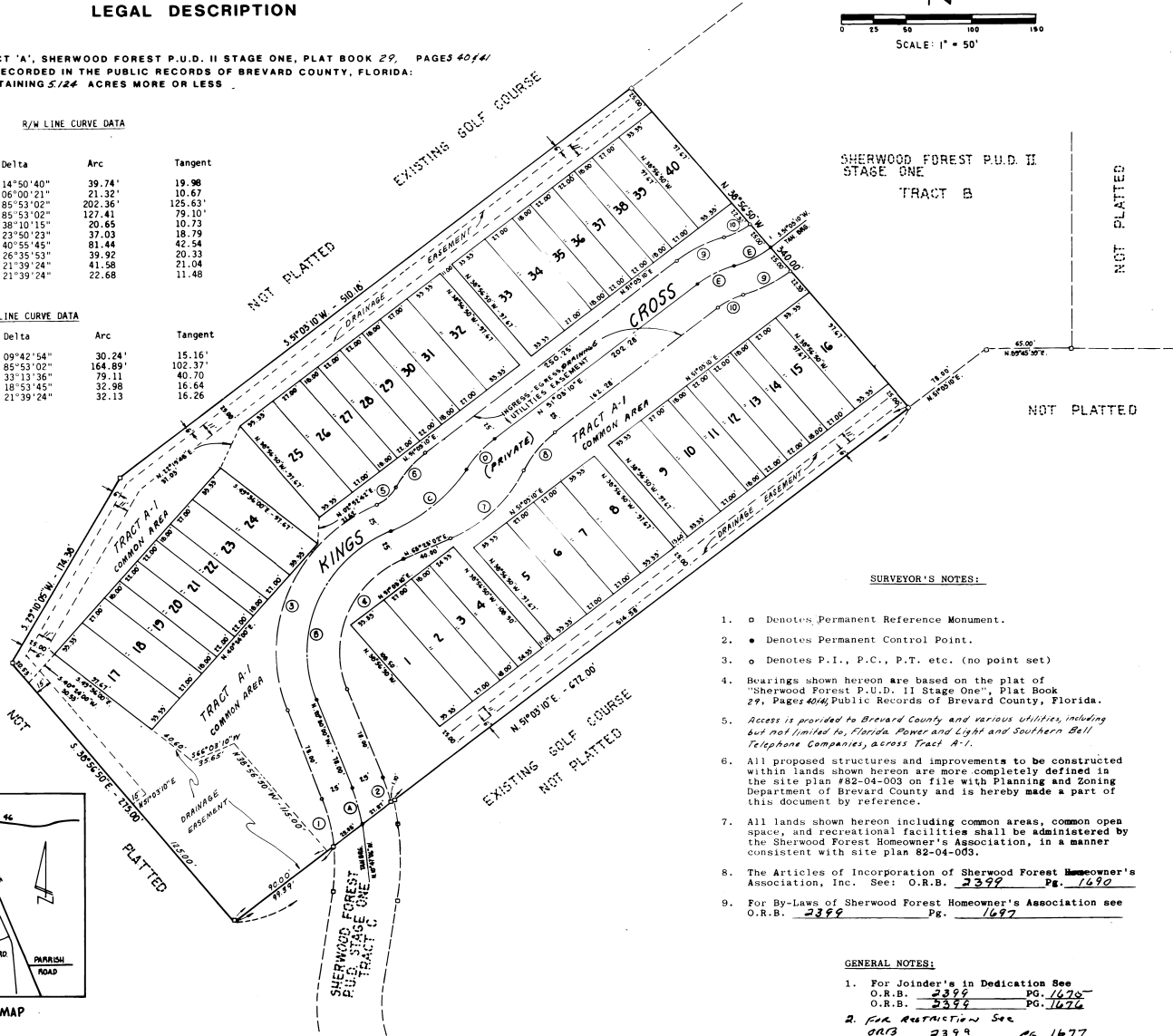
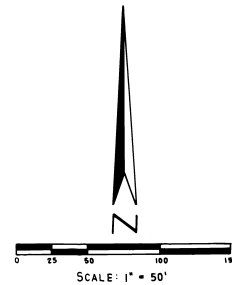
No.	Radius	Delta	Arc	Tangent
1	153.37'	14°50'40"	39.74'	19.98'
2	203.37'	06°00'21"	21.32'	10.67'
3	135.00'	85°53'02"	202.36'	125.63'
4	85.00'	85°53'02"	127.41'	79.10'
5	31.00'	38°10'15"	20.65'	10.73'
6	89.00'	23°50'23"	37.03'	18.79'
7	114.00'	40°55'45"	81.44'	42.54'
8	86.00'	26°35'53"	39.92'	20.33'
9	110.00'	21°39'24"	41.58'	21.04'
10	60.00'	21°39'24"	22.68'	11.48'

### CENTERLINE CURVE DATA

No.	Radius	Delta	Arc	Tangent
A	178.37'	09°42'54"	30.24'	15.16'
B	110.00'	85°53'02"	164.89'	102.37'
C	136.42'	33°13'36"	79.11'	40.70'
D	100.00'	18°53'45"	32.98'	16.64'
E	85.00'	21°39'24"	32.13'	16.26'



LOCATION MAP  
N.T.S.



### SURVEYOR'S NOTES:

- o Denotes Permanent Reference Monument.
- Denotes Permanent Control Point.
- o Denotes P.I., P.C., P.T. etc. (no point set)
- Bearings shown hereon are based on the plat of "Sherwood Forest P.U.D. II Stage One", Plat Book 29, Pages 40-41, Public Records of Brevard County, Florida.
- Access is provided to Brevard County and various utilities, including but not limited to, Florida Power and Light and Southern Bell Telephone Companies, across Tract A-1.
- All proposed structures and improvements to be constructed within lands shown hereon are more completely defined in the site plan #82-04-003 on file with Planning and Zoning Department of Brevard County and is hereby made a part of this document by reference.
- All lands shown hereon including common areas, common open space, and recreational facilities shall be administered by the Sherwood Forest Homeowner's Association, in a manner consistent with site plan 82-04-003.
- The Articles of Incorporation of Sherwood Forest Homeowner's Association, Inc. See: O.R.B. 2397 Pg. 1690
- For By-Laws of Sherwood Forest Homeowner's Association see O.R.B. 2399 Pg. 1697

### GENERAL NOTES:

- For Joinder's in Dedication See  
O.R.B. 2399 Pg. 1678  
O.R.B. 2399 Pg. 1676
- For Restriction See  
O.R.B. 2399 Pg. 1677

PLAT BOOK 29  
AND PAGE 46

**DEDICATION**  
KNOW ALL MEN BY THESE PRESENTS, That the undersigned, being the owner, in fee simple of the lands described in REPLAT OF SHERWOOD FOREST P.U.D. II STAGE ONE, TRACT 'A' hereby dedicate said lands and plat for the use and purposes therein expressed  
to the perpetual use of the public,  
IN WITNESS WHEREOF, the undersigned hereunto set hand and seal, on 11/10/82  
SHERWOOD PROPERTIES, CALIFORNIA LIMITED PARTNERSHIP  
EWELL H. BAKER, JR. Vice President  
L & B INVESTMENTS, INC., GENERAL PARTNER  
1800 LONDON TOWN RD  
TITUSVILLE, FLA

Signed and sealed in the presence of:  
Mary H. Baker  
STATE OF FLORIDA COUNTY OF BREVARD

THIS IS TO CERTIFY, That on 11/10/82 before me, an officer duly authorized to take acknowledgments in the State and County aforesaid, personally appeared, EWELL H. BAKER, JR.

The foregoing instrument was acknowledged before me this 10th day of November, 1982, by EWELL H. BAKER, JR. Vice President, of L & B Investments, Inc., General Partner, on behalf of Sherwood Properties, a California Limited Partnership.

IN WITNESS WHEREOF, I have hereunto set my hand and seal on the above date.  
NOTARY PUBLIC  
My Commission Expires

**CERTIFICATE OF SURVEYOR**  
KNOW ALL MEN BY THESE PRESENTS, That the undersigned, being a licensed and registered land surveyor, does hereby certify that on SEPTEMBER 29, 1982, he completed the survey of the lands as shown in the foregoing plat, that said plat is a correct representation of the lands therein described and platted; that permanent reference monuments have been placed as shown thereon as required by Chapter 177, Florida Statutes; and that said land is located in Brevard County, Florida. Dated: Oct 6, 1982.  
C. H. ... Registration No. 2774

**CERTIFICATE OF ACCEPTANCE OF DEDICATION BY BOARD OF COUNTY COMMISSIONERS**  
THIS IS TO CERTIFY That the Board of County Commissioners hereby accepts all drainage easements, utility easements, and areas dedicated for public use on this plat.  
ATTEST: ... Chairman of the Board  
Clerk of the Board

**CERTIFICATE OF APPROVAL BY BOARD OF COUNTY COMMISSIONERS**  
THIS IS TO CERTIFY, That on NOV 18, 1982, the foregoing plat was approved by the Board of County Commissioners of Brevard County, Florida.  
... Chairman of the Board  
Clerk of the Board  
... County Engineer

**CERTIFICATE OF APPROVAL BY PLANNING AND ZONING COMMISSION**  
THIS IS TO CERTIFY, That on NOV 17, 1982, the Zoning Commission of the above COUNTY approved the foregoing plat.  
... Planning Director

**CERTIFICATE OF CLERK**  
I HEREBY CERTIFY, That I have examined the foregoing plat and find that it complies in form with all the requirements of Chapter 177, Florida Statutes, and was filed for record on December 7, 1982, at 10:59 A.M. File No. 710622  
... Clerk of the Circuit Court in and for Brevard County, Fla.