

MISSION ACRES

A SUBDIVISION OF A PORTION OF THE SW 1/4 OF THE SW 1/4 OF SECTION 14, TOWNSHIP 23 SOUTH, RANGE 36 EAST BREVARD COUNTY, FLORIDA

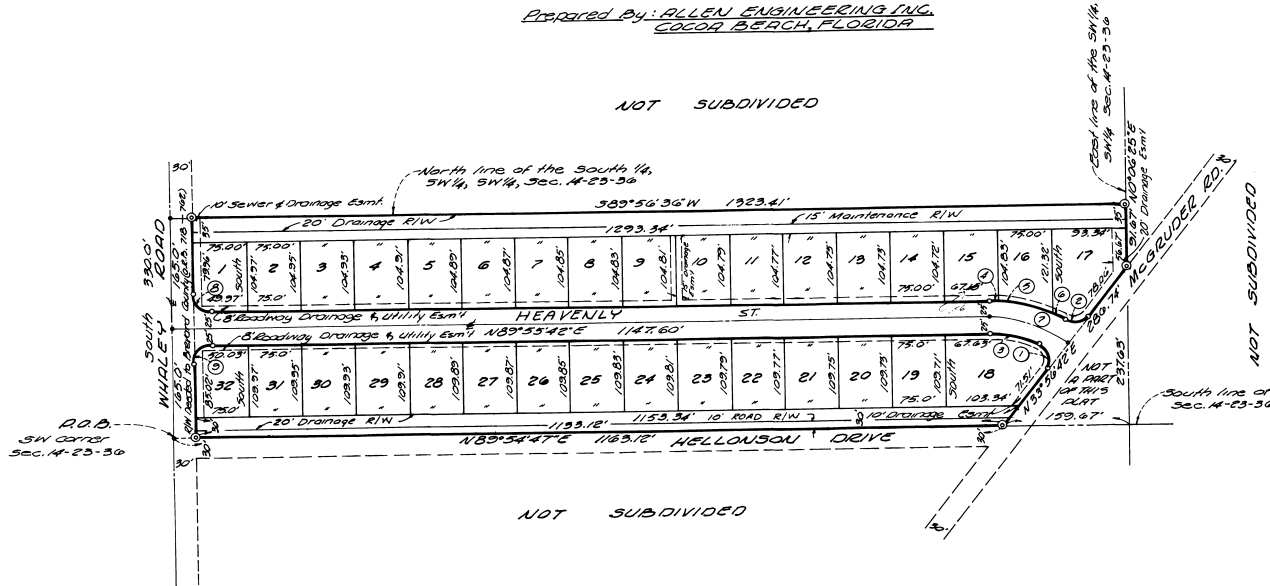
0' 50' 100' 200' 300'

FEBRUARY, 1980

SCALE: 1"=100'

Prepared By: ALLEN ENGINEERING INC.
COCOA BEACH, FLORIDA

NOT SUBDIVIDED



R.O.D. SW CORNER Sec. 14-23-36

NOT SUBDIVIDED

LEGAL DESCRIPTION

The South 1/4 of the SW 1/4 of the SW 1/4 of Section 14, Township 23 South Range 36 East, lying West of the now existing County Road, being more particularly described as follows: Begin at the Southwest corner of Section 14, Township 23 South, Range 36 East; thence run N89°54'42"E along the South line of said Section 14 for a distance of 1163.12 feet to a point on the Westerly right of way line of a County Road; thence N33°56'42"E along said Westerly right of way line for a distance of 286.74 feet to a point on the East line of the South 1/4 of the SW 1/4 of the SW 1/4 of said Section 14; thence go Northerly along the South 1/4 of the SW 1/4 of the SW 1/4 of said Section 14, to the Northwest corner of the South 1/4 of the SW 1/4 of the SW 1/4 of said Section 14, 380°56'36"N for a distance of 1323.41 feet to a point being the Northeast corner of the South 1/4 of the SW 1/4 of the SW 1/4 of the SW 1/4 of said Section 14; thence run along the North line of the South 1/4 of the SW 1/4 of the SW 1/4 of said Section 14, 380°56'36"N for a distance of 1323.41 feet to a point being the North-West corner of the South 1/4 of the SW 1/4 of the SW 1/4 of said Section 14; thence run Southerly along the West line of said Section 14, South 930.00 feet to the Point of Beginning, said parcel contains 3.380 acres more or less; less and except the West 30.00 feet thereof.

SURVEYOR'S NOTES

1. (C) Denotes permanent Reference Monument
2. (D) Denotes Permanent Control Monument
3. The bearings shown are based on an assumed meridian

EASEMENT NOTES

1. A 75' Wide Easement is reserved along the sides of all lots for the installation and maintenance of Public Utilities and Drainage Facilities.

NOTE:

1. Access to all lots are from HEAVENLY WAY.

This is to certify that the Board of County Commissioners by its approval of this Plat hereby accepts all roads, streets, alleys, thoroughfares, parks, playgrounds, parks, canals, drainage easements, utility easements, lakes, pathways, open spaces and other rights of way, easements and areas dedicated for public use on this plat.

Chairman

NO.	RADIUS	DELTA	ARC
1	25.00'	100°29'03"	43.84'
2	25.00'	63°57'18"	38.65'
3	168.50'	23°31'37"	66.70'
4	212.39'	2°02'28"	7.44'
5	212.39'	20°19'34"	77.20'
6	212.39'	5°28'20"	19.05'
7	187.39'	34°10'00"	111.25'
8	25.00'	90°04'48"	39.50'
9	25.00'	69°55'42"	39.24'

For Deed Restrictions See Plat 218-4354 Page 24-29

PLAT BOOK 29
AND PAGE 18

DEDICATION

KNOW ALL MEN BY THESE PRESENTS, That the Corporation named below, being MISSION ACRES in the name of the lands described in hereby dedicates said lands and plat for the uses and purposes herein expressed and dedicates the Streets, alleys, thoroughfares, parks, canals and drainage easements shown hereon to the perpetual use of the public, and

IN WITNESS WHEREOF, has caused these presents to be signed and attested to by the officers named below and its corporate seal to be affixed hereto on FEBRUARY 14, 1980

By Robert M. Bland President

TEEN MISSIONS INTERNATIONAL INC.
1401 W. P.O. BOX 1058
MERRITT PARK, FLORIDA
32552

Signed and sealed in the presence of:

Robert M. Bland
Robert M. Bland President

STATE OF Florida COUNTY OF Brevard

THIS IS TO CERTIFY, That on February 14, 1980 before me, an officer duly authorized to take acknowledgments in the State and County aforesaid, personally appeared Robert M. Bland, and respectively Robert M. Bland President and of the above named corporation incorporated under the laws of the State of Florida to me known to be the individuals and officers described in and who executed the foregoing Dedication and severally acknowledged the execution thereof to be their free act and deed as such officers thereunto duly authorized; that the official seal of said corporation is duly affixed thereto; and that the said Dedication is the act and deed of said corporation.

IN WITNESS WHEREOF, I have hereto set my hand and seal on the above date.

Gloria T. McLeary
NOTARY PUBLIC

My Commission Expires August 23, 1981



CERTIFICATE OF SURVEYOR

KNOW ALL MEN BY THESE PRESENTS, That the undersigned a licensed and registered land surveyor, does hereby certify that on February 14, 1980 he has surveyed the lands as shown in the foregoing plat; that the representation of the lands therein described and permanent reference monuments have been placed as required by Chapter 177, Florida Statutes; and that he is a duly licensed and registered land surveyor in the State of Florida. Dated: February 14, 1980

CERTIFICATE OF ACCEPTANCE OF DEDICATION

BY BOARD OF COUNTY COMMISSIONERS

THIS IS TO CERTIFY, That the Board of County Commissioners hereby accepts all roads, streets, alleys, thoroughfares, parks, canals, drainage easements, utility easements, lakes, pathways, open spaces and other rights of way, easements and areas dedicated for public use on this plat.

ATTEST: Robert M. Bland
Clerk of the Board

CERTIFICATE OF APPROVAL BY BOARD OF COUNTY COMMISSIONERS

THIS IS TO CERTIFY, That on APRIL 23, 1981 the foregoing plat was approved by the Board of County Commissioners of Brevard County, Florida.

Robert M. Bland
Chairman of the Board

Attest: Robert M. Bland
Clerk of the Board

Approved: Robert M. Bland
County Engineer

CERTIFICATE OF APPROVAL BY PLANNING AND ZONING COMMISSION

THIS IS TO CERTIFY, That on APRIL 23, 1981 the Zoning Commission of the County of Brevard approved the foregoing plat.

Robert M. Bland
Planning Director

CERTIFICATE OF CLERK

I HEREBY CERTIFY, That I have examined the foregoing plat and find that it complies in form with all the requirements of Chapter 177, Florida Statutes, and was filed for record on MARCH 30, 1980 at 2:52 PM File No. 64-1165

Robert M. Bland
Clerk of the Circuit Court
In and for Brevard County, Fla.

