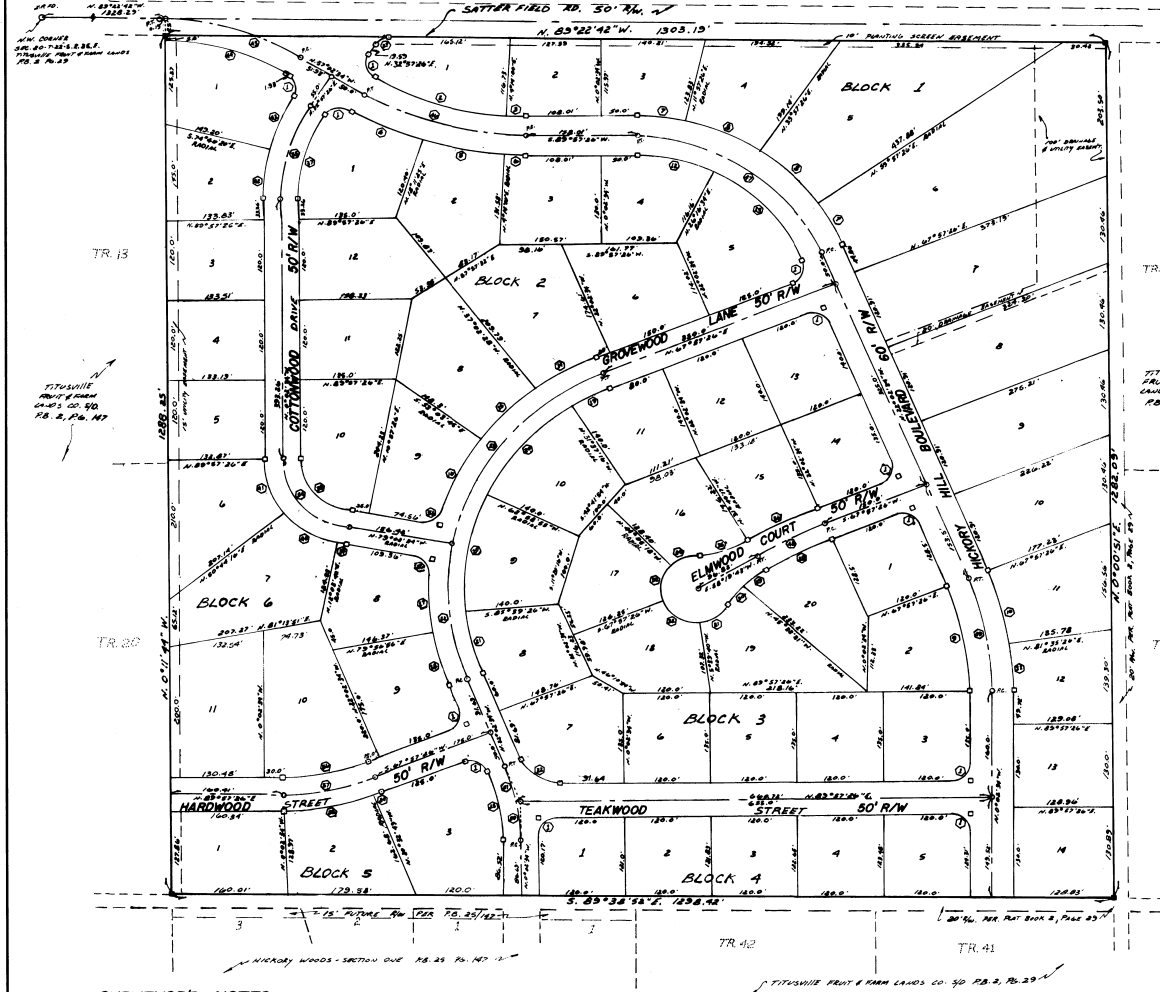


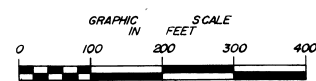
# HICKORY WOODS - SECTION TWO

CITY OF TITUSVILLE BREVARD COUNTY, FLORIDA

A RESUBDIVISION OF TRACTS 9, 10, 11, 12, 21, 22, 23 AND 24, SECTION 20, TOWNSHIP 22 SOUTH, RANGE 35 EAST; ACCORDING TO THE PLAT OF TITUSVILLE FRUIT AND FARM LANDS COMPANY SUBDIVISION, AS RECORDED IN PLAT BOOK 2 AT PAGE 29 OF THE PUBLIC RECORDS OF BREVARD COUNTY, FLORIDA.



STATION	ARC	CHORDAL BEARING	CHORDAL DISTANCE	CHORDAL BEARING
1	35.31	00°00'00"	25.0	
2	120.20	88°48'26"	273.13	
3	22.20	4°46'34"	273.13	
4	108.12	11°52'25"	433.13	
5	22.28	4°46'34"	433.13	
6	49.23	12°00'00"	510.0	
7	119.23	22°00'00"	510.0	
8	106.12	22°00'00"	419.87	
9	120.18	12°58'00"	479.87	
10	70.07	0°00'00"	479.87	
11	118.84	26°12'08"	450.0	
12	161.87	41°42'52"	250.0	
13	38.16	14°58'54"	376.0	
14	109.86	16°01'12"	376.0	
15	168.04	18°42'58"	376.0	
16	38.50	12°43'33"	376.0	
17	128.21	1°52'00"	376.0	
18	24.82	3°54'42"	325.0	
19	177.83	3°2'33"	325.0	
20	100.90	12°41'00"	325.0	
21	71.21	0°00'00"	61.5	
22	102.59	22°00'00"	275.0	
23	31.21	1°52'00"	350.0	
24	122.23	2°03'15"	350.0	
25	112.12	22°00'00"	300.0	
26	25.16	2°32'52"	25.0	
27	100.83	3°37'43"	250.0	
28	26.31	18°52'14"	150.0	
29	32.79	12°56'12"	150.0	
30	42.30	50°52'48"	50.0	
31	44.84	73°52'00"	50.0	
32	53.30	67°57'16"	50.0	
33	36.10	41°22'11"	50.0	
34	75.40	24°57'18"	150.0	
35	109.23	2°32'43"	250.0	
36	125.12	32°00'00"	250.0	
37	103.41	29°02'00"	25.0	
38	2.41	1°08'16"	125.0	
39	84.38	28°40'34"	125.0	
40	85.24	33°18'10"	125.0	
41	72.43	12°16'14"	225.0	
42	82.10	12°48'46"	225.0	
43	122.23	32°12'00"	350.0	
44	122.23	32°12'00"	350.0	
45	122.23	32°12'00"	350.0	
46	122.23	32°12'00"	350.0	
47	122.23	32°12'00"	350.0	
48	122.23	32°12'00"	350.0	
49	122.23	32°12'00"	350.0	
50	122.23	32°12'00"	350.0	
51	122.23	32°12'00"	350.0	
52	122.23	32°12'00"	350.0	
53	122.23	32°12'00"	350.0	
54	122.23	32°12'00"	350.0	
55	122.23	32°12'00"	350.0	
56	122.23	32°12'00"	350.0	
57	122.23	32°12'00"	350.0	
58	122.23	32°12'00"	350.0	
59	122.23	32°12'00"	350.0	
60	122.23	32°12'00"	350.0	
61	122.23	32°12'00"	350.0	
62	122.23	32°12'00"	350.0	
63	122.23	32°12'00"	350.0	
64	122.23	32°12'00"	350.0	
65	122.23	32°12'00"	350.0	
66	122.23	32°12'00"	350.0	
67	122.23	32°12'00"	350.0	
68	122.23	32°12'00"	350.0	
69	122.23	32°12'00"	350.0	
70	122.23	32°12'00"	350.0	
71	122.23	32°12'00"	350.0	
72	122.23	32°12'00"	350.0	
73	122.23	32°12'00"	350.0	
74	122.23	32°12'00"	350.0	
75	122.23	32°12'00"	350.0	
76	122.23	32°12'00"	350.0	
77	122.23	32°12'00"	350.0	
78	122.23	32°12'00"	350.0	
79	122.23	32°12'00"	350.0	
80	122.23	32°12'00"	350.0	
81	122.23	32°12'00"	350.0	
82	122.23	32°12'00"	350.0	
83	122.23	32°12'00"	350.0	
84	122.23	32°12'00"	350.0	
85	122.23	32°12'00"	350.0	
86	122.23	32°12'00"	350.0	
87	122.23	32°12'00"	350.0	
88	122.23	32°12'00"	350.0	
89	122.23	32°12'00"	350.0	
90	122.23	32°12'00"	350.0	
91	122.23	32°12'00"	350.0	
92	122.23	32°12'00"	350.0	
93	122.23	32°12'00"	350.0	
94	122.23	32°12'00"	350.0	
95	122.23	32°12'00"	350.0	
96	122.23	32°12'00"	350.0	
97	122.23	32°12'00"	350.0	
98	122.23	32°12'00"	350.0	
99	122.23	32°12'00"	350.0	
100	122.23	32°12'00"	350.0	



**SURVEYOR'S NOTES:**  
 1 (o 8 o) DENOTES P.C.P.  
 2 (w) DENOTES P.R.M.  
 3 A 7.5' EASEMENT FOR PUBLIC UTILITIES IS RESERVED ADJACENT TO ALL SIDE & REAR LOT LINES UNLESS OTHERWISE SHOWN  
 4 BEARINGS SHOWN HEREON ARE BASED UPON HICKORY WOODS-SECTION ONE, PLAT BOOK 25, PAGE 147

DEED RESTRICTIONS - SEE O.R.B. 2350 PG. 2910  
 JOYNER 2350 2917

PAUL N. HOLLEY & ASSOCIATES, INC.  
 LAND SURVEYORS  
 TITUSVILLE, FLORIDA

PLAT BOOK 29  
 AND PAGE 7

**DEDICATION**  
 KNOW ALL MEN BY THESE PRESENTS, that the Corporation named below, being the owner in fee simple of the lands described in HICKORY WOODS - SECTION TWO hereby dedicates said lands and plot for the uses and purposes therein expressed and dedicates all roads, streets, alleys, thoroughfares, parks, canals, drainage easements, utility easements, lakes, pathways, open spaces and other rights of way, easements shown hereon to the perpetual use of the public, and IN WITNESS WHEREOF, has caused these presents to be signed and attested by the officers named below and its corporate seal to be affixed hereto on 19th day of SEPTEMBER, 1981.  
 By: *Janet R. Connors* President  
 Attest: *Janet R. Connors* Secretary

STATE OF FLORIDA COUNTY OF BREVARD  
 THIS IS TO CERTIFY, that on SEPTEMBER 23, 1981 before me, an officer duly authorized to take acknowledgments in the State and County aforesaid, personally appeared JOHN GARR and Janet R. Connors respectively, President and Secretary of the above named corporation incorporated under the laws of the State of FLORIDA, to me known to be the individuals and officers described in and who executed the foregoing Dedication and severally acknowledged the execution thereof to be their free act and deed as such officers thereunto duly authorized; that the official seal of said corporation is duly affixed thereto; and that the said Dedication is the act and deed of said corporation.  
 IN WITNESS WHEREOF, I have hereto set my hand and seal on the above date.  
*Janet R. Connors*  
 Notary Public  
 My Commission Expires Feb 8, 1985

**CERTIFICATE OF SURVEYOR**  
 KNOW ALL MEN BY THESE PRESENTS, that the undersigned, being a licensed and registered land surveyor, does hereby certify that an original plat of the lands shown in the foregoing plat; that permanent reference monuments have been placed as shown thereon as required by Chapter 177, Florida Statutes; and that said land is located in Brevard County, Florida. Dated 8/19/81.  
*Janet R. Connors*  
 Registration No. 1261

**CERTIFICATE OF APPROVAL BY MUNICIPALITY**  
 THIS IS TO CERTIFY, that on OCTOBER 13, 1981 the CITY COUNCIL OF THE CITY OF TITUSVILLE approved the foregoing plat.  
 Attest: *Janet R. Connors* Mayor  
 City Clerk

**CERTIFICATE OF ACCEPTANCE OF DEDICATION BY BOARD OF COUNTY COMMISSIONERS**  
 THIS IS TO CERTIFY That the Board of County Commissioners hereby accepts all roads, streets, alleys, thoroughfares, parks, canals, drainage easements, utility easements, lakes, pathways, open spaces and other rights of way, easements and areas dedicated for public use on this plat.  
 Attest: *Janet R. Connors* Chairman of the Board  
 Clerk of the Board

**CERTIFICATE OF APPROVAL BY BOARD OF COUNTY COMMISSIONERS**  
 THIS IS TO CERTIFY, that on SEPTEMBER 23, 1981 the foregoing plat was approved by the Board of County Commissioners of Brevard County, Florida.  
 Attest: *Janet R. Connors* Chairman of the Board  
 Clerk of the Board  
 Approved: *Janet R. Connors* County Engineer

**CERTIFICATE OF APPROVAL BY PLANNING AND ZONING COMMISSION**  
 THIS IS TO CERTIFY, that on SEPTEMBER 23, 1981 the Zoning Commission of the above approved the foregoing plat.  
 Attest: *Janet R. Connors* Planning and Zoning Director  
**CERTIFICATE OF CLERK**  
 I HEREBY CERTIFY, that I have examined the foregoing plat and find that it complies in form with all the requirements of Chapter 177, Florida Statutes, and was filed for record on SEPTEMBER 23, 1981 at 11:45 AM File No. 625656.  
*R.C. Monahan*  
 Clerk of the Circuit Court  
 in and for Brevard County, Fla.