

EAST

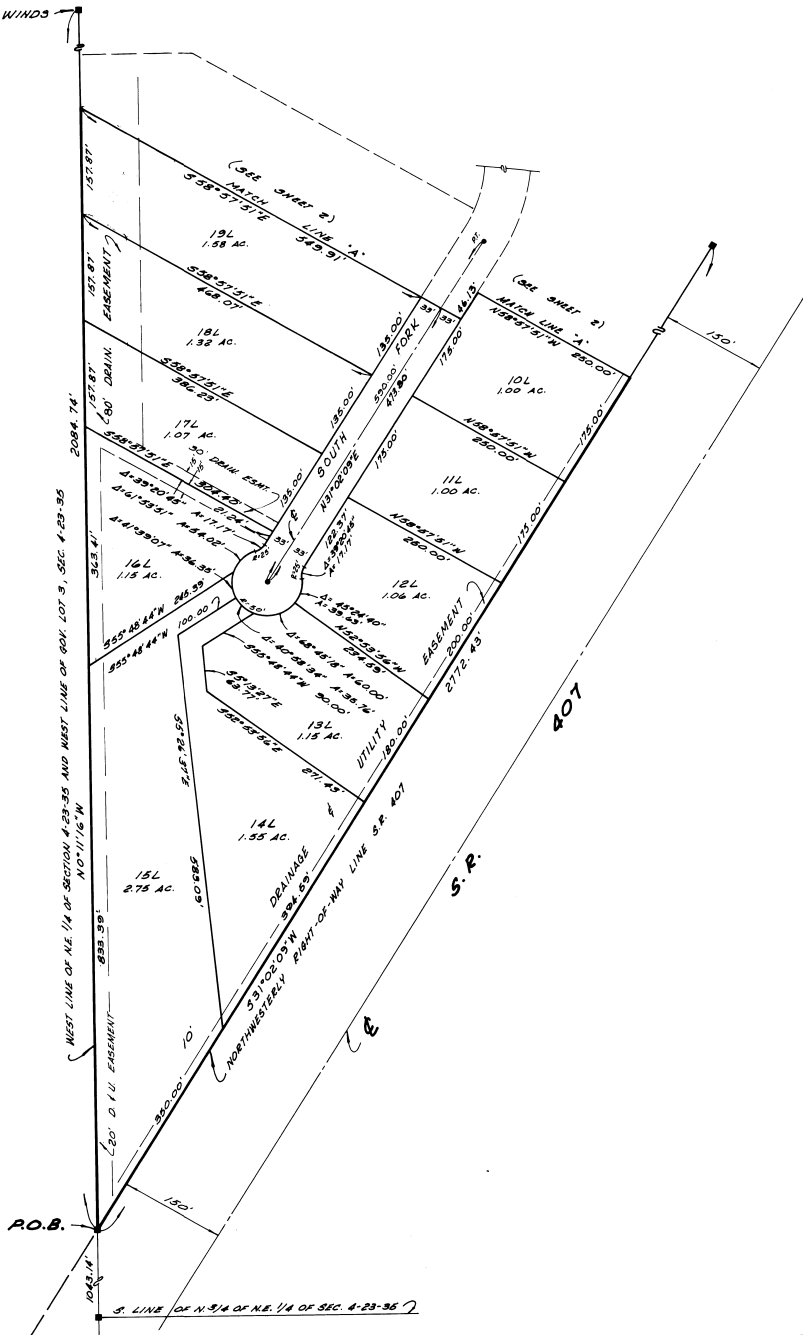
WINDS

III

PLAT BOOK 29
AND PAGE 2

S.W. CORNER OF EAST WINDS
(P.B. 25, P. 17)

NOT SUBDIVIDED



Prepared By
MELVIN & McFERRIN
ENGINEERS and LAND SURVEYORS
320 INDIAN RIVER AVENUE
TITUSVILLE, FLORIDA