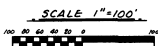
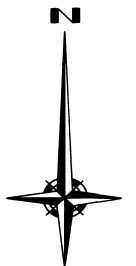


# REPLAT OF COCOA WOODS

A Subdivision Lying in Section 13, Township 24 S., Range 35 E., Brevard County, Florida.

Sheet 2 of 2

PLAT BOOK 28  
PAGE 87



### SURVEYOR'S NOTES

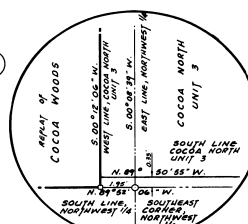
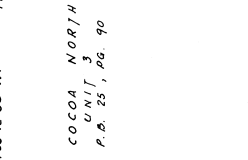
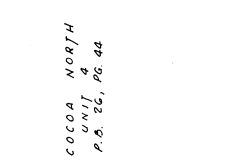
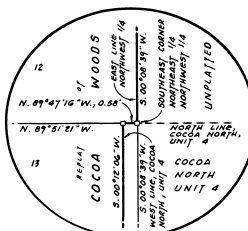
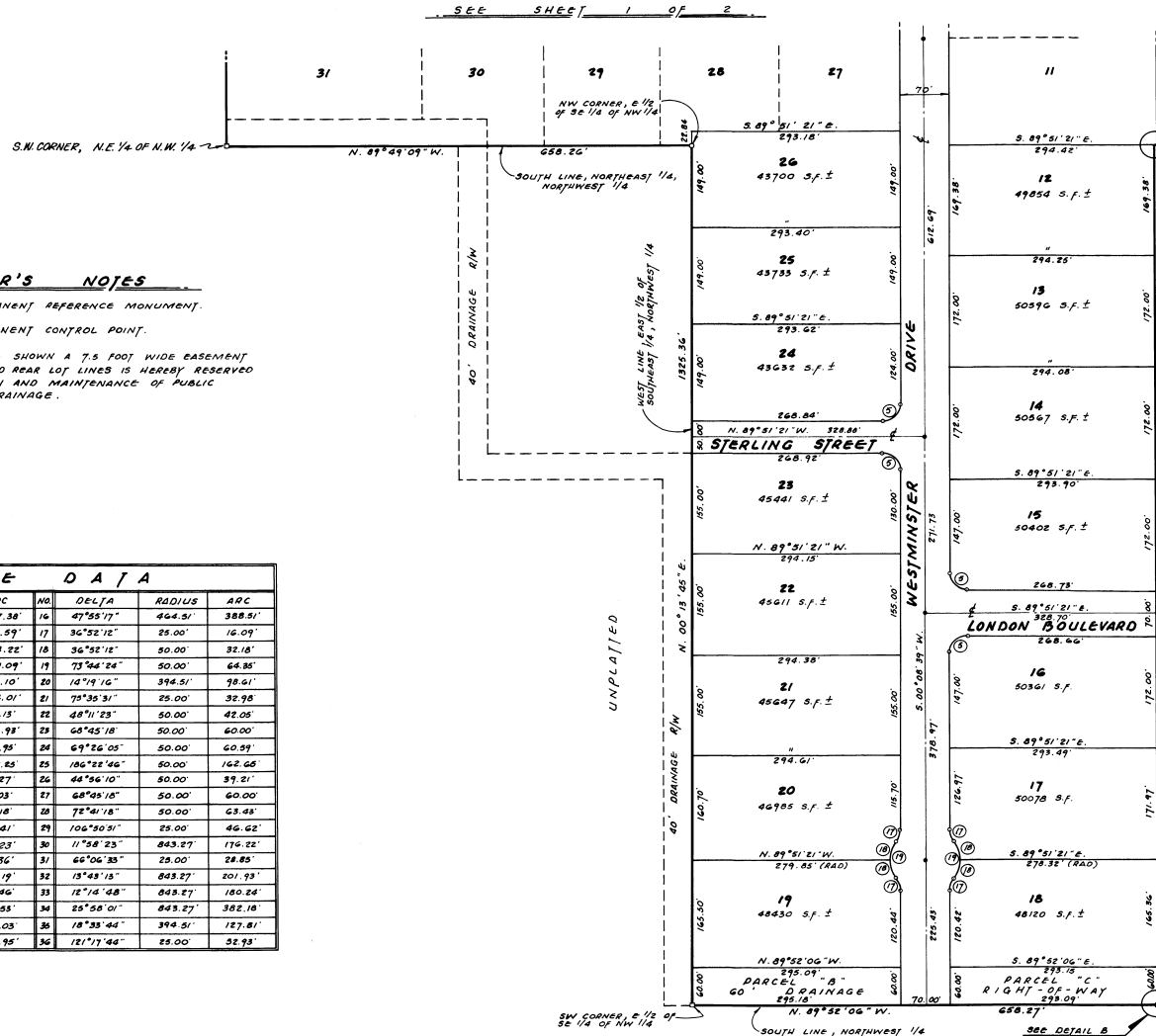
"O" DENOTES PERMANENT REFERENCE MONUMENT.

"\* " DENOTES PERMANENT CONTROL POINT.

UNLESS OTHERWISE SHOWN A 7.5 FOOT WIDE BASEMENT ALONG ALL SIDE AND REAR LOT LINES IS HEREBY RESERVED FOR THE INSTALLATION AND MAINTENANCE OF PUBLIC UTILITIES, AND DRAINAGE.

SEE SHEET 1 OF 2

CURVE DATA							
DELTA	RADIUS	ARC	NO.	DELTA	RADIUS	ARC	
A	16°49'37"	808.27'	237.38'	16	47°55'17"	464.51'	388.51'
B	44°46'18"	808.27'	431.59'	17	36°52'12"	25.00'	16.09'
C	27°56'41"	808.27'	394.22'	18	36°52'12"	50.00'	32.18'
D	30°33'36"	429.51'	229.09'	19	73°44'24"	50.00'	64.85'
E	49°46'13"	429.51'	373.10'	20	14°19'16"	394.51'	98.61'
F	19°12'39"	429.51'	144.01'	21	75°35'31"	25.00'	32.98'
G	44°32'27"	773.27'	401.15'	22	48°11'23"	50.00'	42.05'
H	18°00'00"	773.27'	242.93'	23	68°45'18"	50.00'	60.00'
I	14°00'00"	773.27'	188.75'	24	69°26'05"	50.00'	60.59'
J	12°32'27"	773.27'	149.25'	25	106°22'46"	80.00'	142.68'
K	90°00'00"	25.00'	39.27'	26	44°56'10"	50.00'	39.21'
L	48°11'23"	25.00'	21.03'	27	68°45'18"	50.00'	60.00'
M	66°40'03"	50.00'	58.18'	28	72°41'18"	50.00'	63.48'
N	71°31'20"	50.00'	62.41'	29	106°50'51"	25.00'	46.62'
O	133°11'23"	50.00'	116.23'	30	11°58'23"	843.27'	176.22'
P	3°00'00"	50.00'	4.36'	31	66°06'33"	25.00'	24.85'
Q	276°22'46"	50.00'	241.19'	32	13°43'13"	843.27'	201.93'
R	80°09'02"	25.00'	38.46'	33	12°14'48"	843.27'	180.24'
S	14°57'11"	464.51'	118.55'	34	25°58'01"	843.27'	382.10'
T	16°39'22"	464.51'	135.03'	35	18°33'44"	394.51'	127.81'
U	16°58'44"	464.51'	134.95'	36	121°17'46"	25.00'	52.93'



ENGINEERS & SURVEYORS

MERRITT ISLAND, FLORIDA

255 FORTENBERRY ROAD P.O. BOX 217 PHONE 305/452-8340

DETAIL B - N.T.S.