

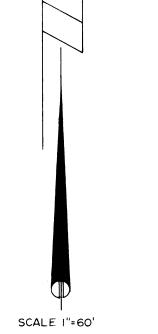
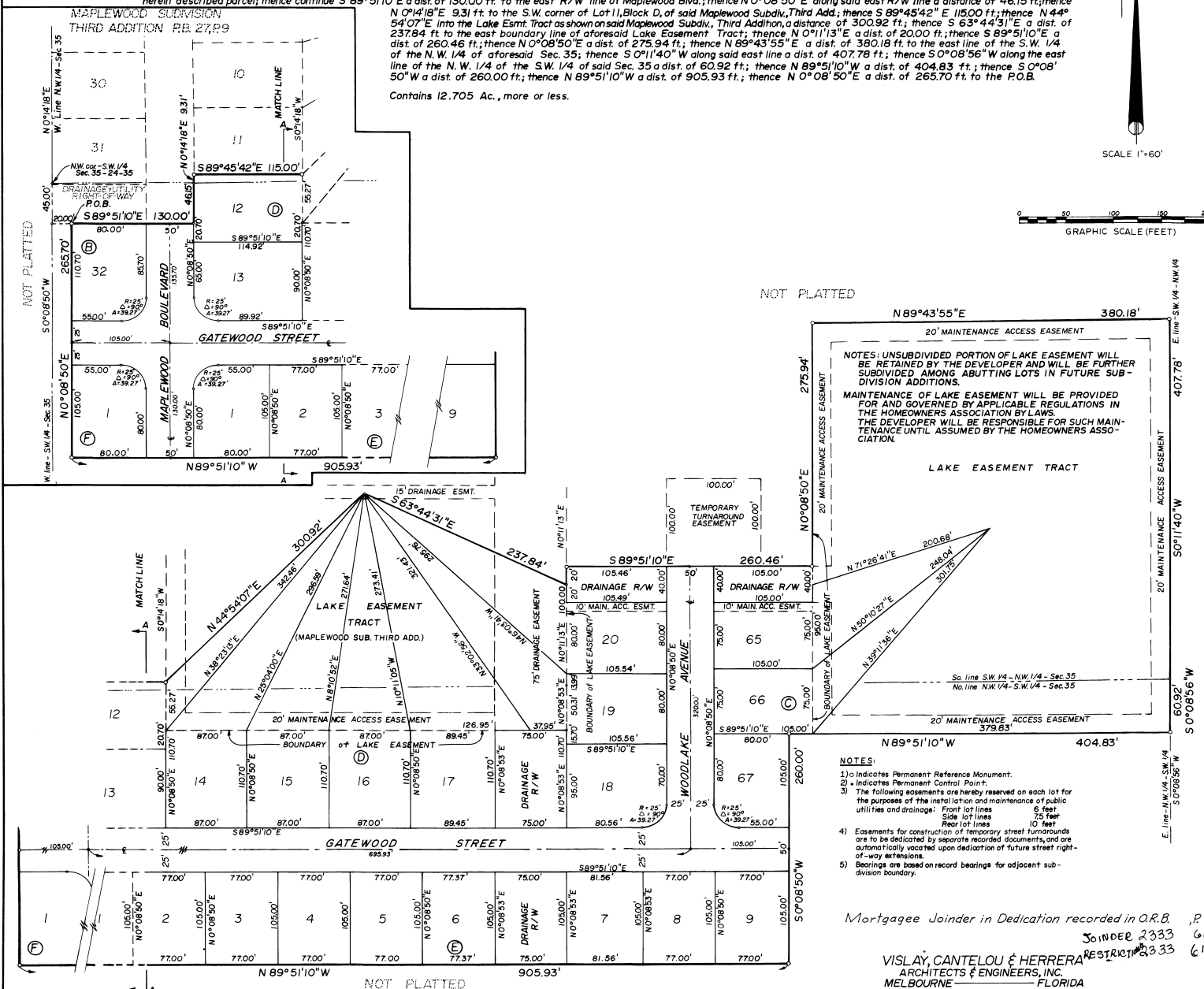
MAPLEWOOD LAKES PHASE 1

A MOBILE HOME SUBDIVISION LYING IN THE W. 1/2 OF SECTION 35, TOWNSHIP 24 SOUTH, RANGE 35 EAST, BREVARD COUNTY, FLORIDA; INCLUDING A RESUBDIVISION OF PART OF THE LAKE EASEMENT TRACT, MAPLEWOOD SUBDIVISION, THIRD ADDITION AS RECORDED IN PLAT BOOK 27, PAGE 9, PUBLIC RECORDS OF BREVARD COUNTY, FLORIDA.

DESCRIPTION:

From the N.W. corner of the S.W. 1/4 of Section 35, Township 24 South, Range 35 East, Brevard County, Florida, run S 0°08'50"W along the west line of said S.W. 1/4 of Sec. 35 a dist. of 45.00 ft.; thence S 89°51'10"E along the south boundary of Maplewood Subdivision, Third Addition, as recorded in Brevard County Plat Book 27, Page 9, a dist. of 20.00 ft. to the Point of Beginning of the herein described parcel; thence continue S 89°51'10"E a dist. of 130.00 ft. to the east R/W line of Maplewood Blvd.; thence N 0°08'50"E along said east R/W line a distance of 46.15 ft.; thence N 0°14'18"E 9.31 ft. to the S.W. corner of Lot 11, Block D, of said Maplewood Subdiv., Third Add.; thence S 89°45'42"E 115.00 ft.; thence N 44°54'07"E into the Lake Esmt. Tract as shown on said Maplewood Subdiv., Third Addition, a distance of 300.92 ft.; thence S 63°44'31"E a dist. of 237.84 ft. to the east boundary line of aforesaid Lake Easement Tract; thence N 0°11'13"E a dist. of 20.00 ft.; thence S 89°51'10"E a dist. of 260.46 ft.; thence N 0°08'50"E a dist. of 275.94 ft.; thence N 89°43'55"E a dist. of 380.18 ft. to the east line of the S.W. 1/4 of the N.W. 1/4 of aforesaid Sec. 35; thence S 0°11'40"W along said east line a dist. of 407.78 ft.; thence S 0°08'56"W along the east line of the N.W. 1/4 of the S.W. 1/4 of said Sec. 35 a dist. of 60.92 ft.; thence N 89°51'10"W a dist. of 404.83 ft.; thence S 0°08'50"W a dist. of 260.00 ft.; thence N 89°51'10"W a dist. of 905.93 ft.; thence N 0°08'50"E a dist. of 265.70 ft. to the P.O.B.

Contains 12.705 Ac., more or less.



PLAT BOOK 28
AND PAGE 83

DEDICATION
KNOW ALL MEN BY THESE PRESENTS, That the Corporation named below, being the owner in fee simple of the lands described in MAPLEWOOD LAKES PHASE 1 hereby dedicates said lands and plat for the uses and purposes therein expressed and dedicates all roads, streets, alleys, thoroughfares, parks, canals, drainage easements, utility easements, pathways, open spaces and other rights of way, easements shown hereon to the perpetual use of the public, and IN WITNESS WHEREOF, has caused these presents to be signed and attested to by its officers named below and its corporate seal to be affixed hereto on OCTOBER 5, 1981.
By: *[Signature]*
MAPLEWOOD ENTERPRISES INC. President
Attest: *[Signature]*
Signed and sealed in the presence of:
[Signature]
COCOA, FLA.

STATE OF Florida COUNTY OF Brevard
THIS IS TO CERTIFY, That on October 5, 1981 before me, an officer duly authorized to take acknowledgments in the State and County aforesaid, personally appeared G. M. T. ... and B. G. ... respectively President and Secretary of the above named corporation incorporated under the laws of the State of Florida, to me known to be the individuals and officers described in and who executed the foregoing Dedication and severally acknowledged the execution thereof to be their free act and deed as such officers thereto duly authorized, that the official seal of said corporation is duly affixed thereto, and that the said Dedication is the act and deed of said corporation.
IN WITNESS WHEREOF, I have hereto set my hand and seal on the above date.
[Signature]
NOTARY PUBLIC
My Commission Expires 2/13/84

CERTIFICATE OF SURVEYOR
KNOW ALL MEN BY THESE PRESENTS, That the undersigned, being a licensed and registered land surveyor, does hereby certify that on Sept. 16, 1981 he completed the survey of the lands as shown in the foregoing plat; that said plat is a correct representation of the lands therein described and that payment reference monuments have been placed as shown hereon as required by Chapter 177, Florida Statutes and that said lands is located in Brevard County, Florida, dated Oct. 25, 1979.
V. S. POWELL
Registration No. 1912

CERTIFICATE OF APPROVAL BY MUNICIPALITY
THIS IS TO CERTIFY, That on _____ the _____ approved the foregoing plat.
SEAL
ATTEST: _____ MAYOR
_____ CITY CLERK

CERTIFICATE OF ACCEPTANCE OF DEDICATION BY BOARD OF COUNTY COMMISSIONERS
THIS IS TO CERTIFY That the Board of County Commissioners hereby accepts all roads, streets, alleys, thoroughfares, parks, canals, drainage easements, utility easements, lake, pathways, open spaces and other rights of way, easements and areas dedicated for public use on this plat.
[Signature]
Chairman of the Board
ATTEST: *[Signature]*
Clerk of the Board

CERTIFICATE OF APPROVAL BY BOARD OF COUNTY COMMISSIONERS
THIS IS TO CERTIFY, That on OCT. 22, 1981 the foregoing plat was approved by the Board of County Commissioners of Brevard County, Florida.
[Signature]
Chairman of the Board
ATTEST: *[Signature]*
Clerk of the Board
Approved _____ County Engineer

CERTIFICATE OF APPROVAL BY PLANNING AND ZONING COMMISSION
THIS IS TO CERTIFY, That on OCTOBER 22, 1981 the Zoning Commission of the Board of County Commissioners of Brevard County, Florida, approved the foregoing plat.
[Signature]
Planning and Zoning Director

CERTIFICATE OF CLERK
I HEREBY CERTIFY, That I have examined the foregoing plat and find that it complies in form with all the requirements of Chapter 177, Florida Statutes, and was filed for record on OCTOBER 22, 1981 at 5:44 PM File No. 598422.
[Signature]
Clerk of the Circuit Court in and for Brevard County, Fla.

NOTES: UNSUBDIVIDED PORTION OF LAKE EASEMENT WILL BE RETAINED BY THE DEVELOPER AND WILL BE FURTHER SUBDIVIDED AMONG ABUTTING LOTS IN FUTURE SUBDIVISION ADDITIONS.
MAINTENANCE OF LAKE EASEMENT WILL BE PROVIDED FOR AND GOVERNED BY APPLICABLE REGULATIONS IN THE HOMEOWNERS ASSOCIATION BY LAWS.
THE DEVELOPER WILL BE RESPONSIBLE FOR SUCH MAINTENANCE UNTIL ASSUMED BY THE HOMEOWNERS ASSOCIATION.

- NOTES:
- 1) Indicates Permanent Reference Monument.
 - 2) Indicates Permanent Control Point.
 - 3) The following easements are hereby reserved on each lot for the purposes of this plat and maintenance of public utilities and drainage: Front lot lines 6 feet; Side lot lines 10 feet; Rear lot lines 10 feet.
 - 4) Easements for construction of temporary street turnarounds are to be dedicated by separate recorded documents, and are automatically vacated upon dedication of future street right-of-way extensions.
 - 5) Bearings are based on record bearings for adjacent subdivision boundary.

Mortgagee Joinder in Dedication recorded in O.R.B. 2333
JANUARY 23 1983
V. S. POWELL ARCHITECTS & ENGINEERS, INC. MELBOURNE FLORIDA