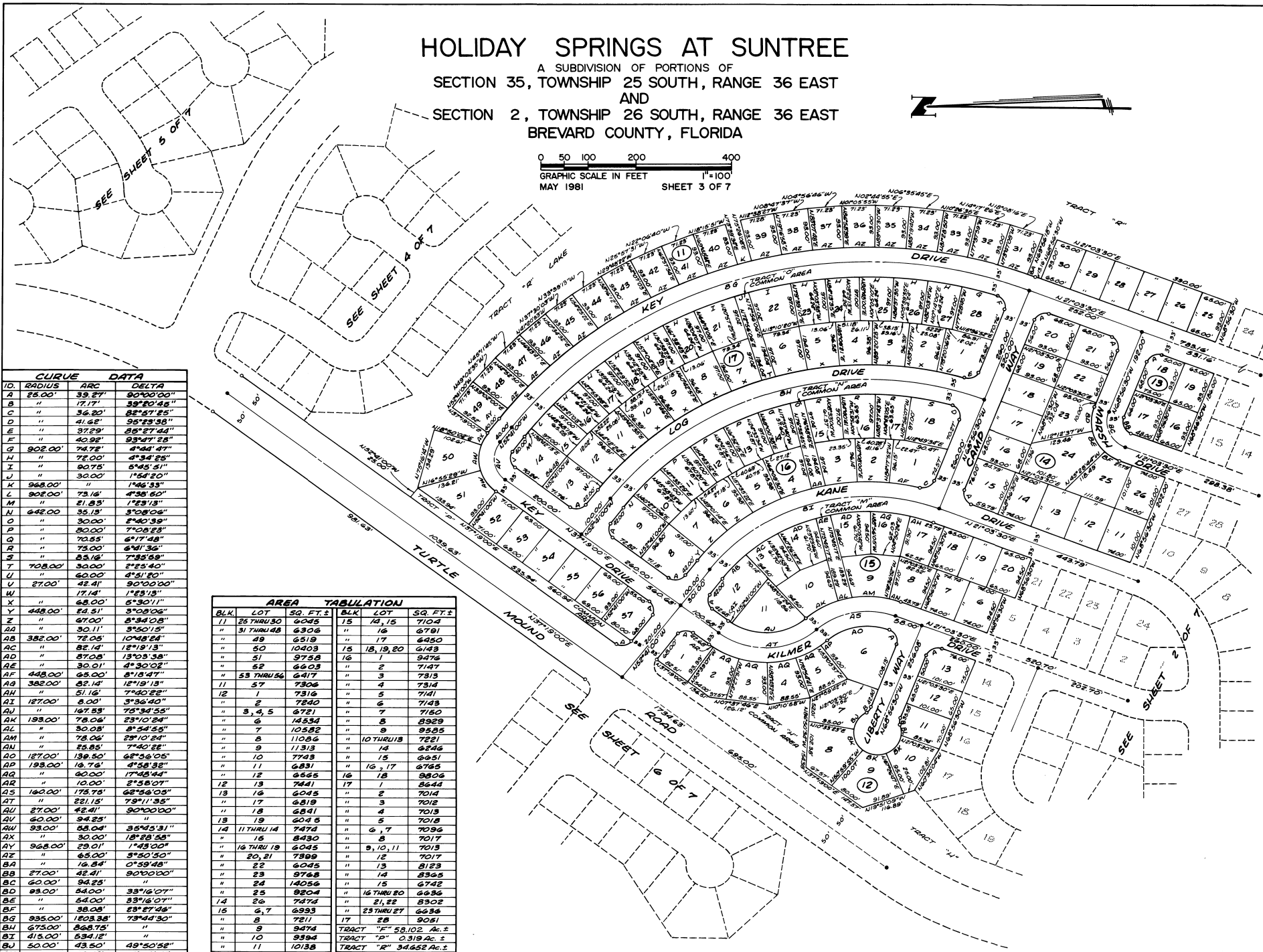
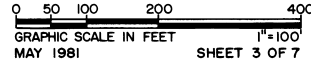


# HOLIDAY SPRINGS AT SUNTREE

A SUBDIVISION OF PORTIONS OF  
SECTION 35, TOWNSHIP 25 SOUTH, RANGE 36 EAST  
AND  
SECTION 2, TOWNSHIP 26 SOUTH, RANGE 36 EAST  
BREVARD COUNTY, FLORIDA



CURVE DATA		
ID.	RADIUS	ARC DELTA
A	25.00'	33.27' 90°00'00"
B	"	17.17' 39°20'45"
C	"	36.20' 82°57'25"
D	"	41.62' 95°23'38"
E	"	32.22' 85°27'44"
F	"	40.82' 93°27'25"
G	902.00'	74.72' 4°44'47"
H	"	72.00' 4°34'25"
I	"	90.75' 6°45'51"
J	"	30.00' 1°54'20"
K	968.00'	142.33' "
L	902.00'	73.16' 4°38'50"
M	"	21.83' 1°23'13"
N	642.00'	35.13' 3°08'06"
O	"	30.00' 1°40'39"
P	"	80.00' 7°08'23"
Q	"	70.53' 6°17'48"
R	"	72.00' 6°41'36"
S	"	23.16' 7°32'59"
T	708.00'	30.00' 2°25'40"
U	"	60.00' 4°31'20"
V	27.00'	42.41' 90°00'00"
W	"	17.14' 1°23'13"
X	"	65.00' 5°40'11"
Y	448.00'	24.51' 3°08'23"
Z	"	67.00' 5°34'03"
AA	"	30.11' 3°50'15"
AB	382.00'	72.05' 10°48'24"
AC	"	82.14' 12°19'13"
AD	"	87.08' 13°03'38"
AE	"	30.01' 4°30'02"
AF	448.00'	30.01' 3°15'47"
AG	382.00'	82.14' 12°19'13"
AH	"	51.16' 7°40'22"
AI	127.00'	80.00' 3°36'40"
AJ	"	167.53' 7°53'55"
AK	193.00'	78.06' 23°10'24"
AL	"	7' 10°52'
AM	"	78.06' 23°10'24"
AN	"	25.85' 7°40'22"
AO	127.00'	138.50' 68°56'05"
AP	193.00'	16.76' 4°58'32"
AQ	"	90.00' 17°45'44"
AR	"	10.00' 2°58'07"
AS	160.00'	175.75' 62°54'55"
AT	"	22.18' 7°51'55"
AU	27.00'	42.41' 90°00'00"
AV	60.00'	94.23' "
AW	93.00'	58.04' 35°45'31"
AX	"	30.00' 18°28'58"
AY	968.00'	23.01' 1°43'00"
AZ	"	85.00' 3°50'50"
BA	"	16.84' 0°39'48"
BB	27.00'	42.41' 90°00'00"
BC	60.00'	94.23' "
BD	93.00'	54.00' 33°16'07"
BE	"	54.00' 33°16'07"
BF	"	38.08' 5°51'44"
BG	935.00'	1803.38' 73°44'30"
BH	675.00'	868.75' "
BI	413.00'	534.12' "
BJ	50.00'	43.50' 49°50'58"
BK	"	53.72' 61°33'15"
BL	"	21.10' 24°10'44"

AREA TABULATION			
BLK.	LOT	SQ. FT. ±	SQ. FT. ±
11	25 THRU 30	6045	15 12, 15 7104
"	31 THRU 48	6306	" 16 6781
"	49	6519	" 17 6450
"	50	10403	15 18, 19, 20 6143
"	51	9738	16 1 9476
"	52	6603	" 2 7147
"	53 THRU 56	6417	" 3 7313
11	57	7306	" 4 7314
12	1	7316	" 5 7141
"	2	7240	" 6 7143
"	3, 4, 5	6721	" 7 7150
"	6	14534	" 8 8329
"	7	10582	" 9 9585
"	8	11086	" 10 THRU 13 7012
"	9	11313	" 14 6242
"	10	7743	" 15 6251
"	11	6831	" 16, 17 6765
"	12	6565	16 18 9806
12	13	7441	17 1 8644
13	16	6045	" 2 7014
"	17	6819	" 3 7012
"	18	6841	" 4 7013
13	19	6045	" 5 7018
14	11 THRU 14	7474	" 6, 7 7096
"	15	8430	" 8 7017
"	16 THRU 19	6045	" 9, 10, 11 7013
"	20, 21	7399	" 12 7017
"	22	6045	" 13 8123
"	23	9768	" 14 8365
"	24	14056	" 15 6742
"	25	8204	" 16 THRU 20 6636
14	26	7474	" 21, 22 8302
15	6, 7	6393	" 23 THRU 27 6636
"	8	7211	" 28 5051
"	9	9474	TRACT "F" 58,102 Ac. ±
"	10	9394	TRACT "P" 0.319 Ac. ±
"	11	10138	TRACT "R" 34.652 Ac. ±
"	12	9741	TRACT "U" 2.028 Ac. ±
"	13	6871	TRACT "M" 0.130 Ac. ±
"			TRACT "O" 0.134 Ac. ±

PREPARED BY:  
STOTTLEBARGER & ASSOC.  
CIVIL ENGINEERS, P.L.A.  
JOB No. 73222-B-218