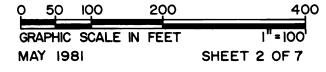


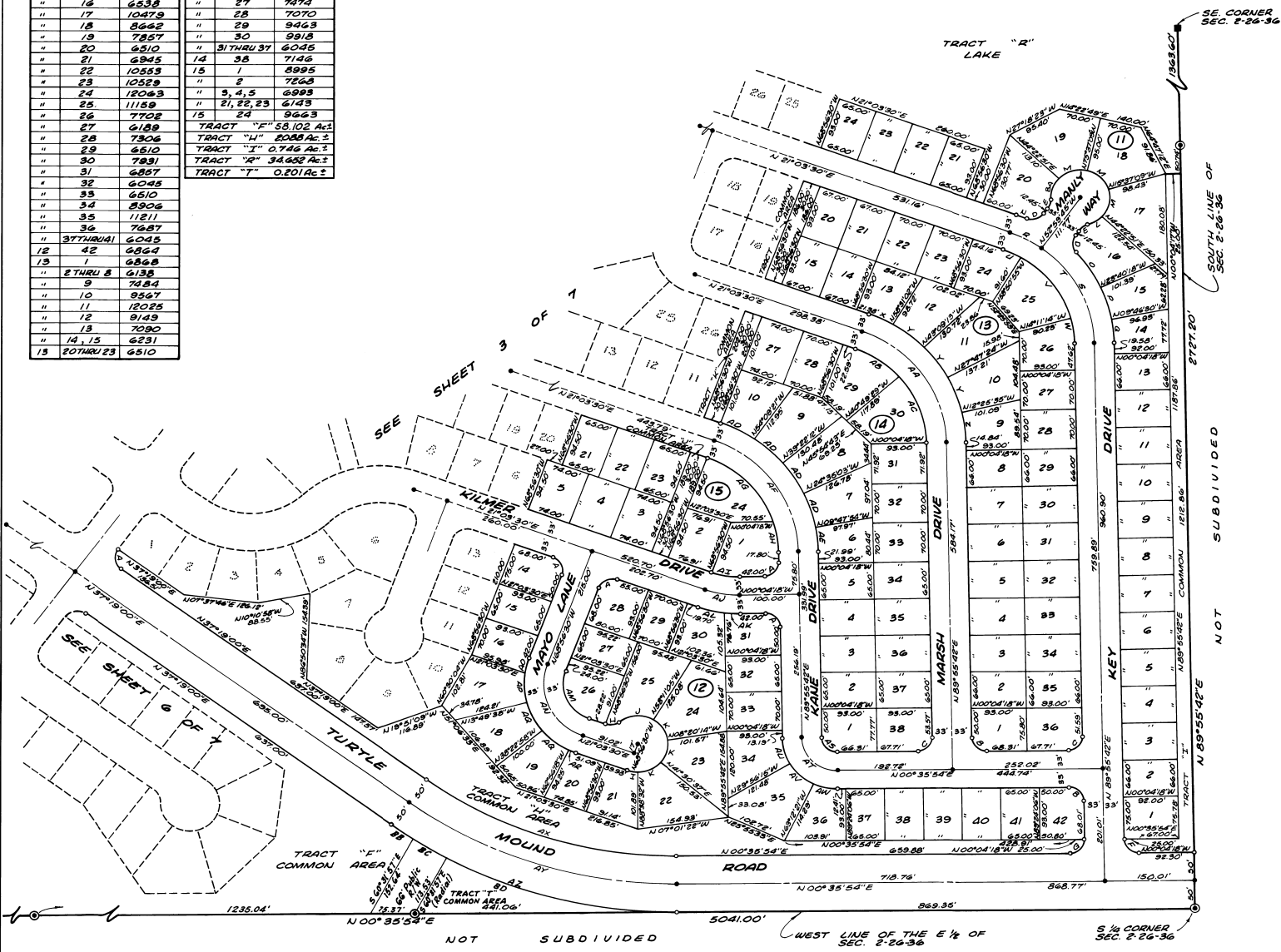
* See affidavit of error
 filed 1/22/82 Book 234
 Page 363

HOLIDAY SPRINGS AT SUNTREE

A SUBDIVISION OF PORTIONS OF
 SECTION 35, TOWNSHIP 25 SOUTH, RANGE 36 EAST
 AND
 SECTION 2, TOWNSHIP 26 SOUTH, RANGE 36 EAST
 BREVARD COUNTY, FLORIDA



AREA TABULATION					
BLK.	LOT	SQ. FT. ±	BLK.	LOT	SQ. FT. ±
11	1	6926	15	24	7249
"	2 THRU 13	6092	"	25	8995
"	14	6477	"	26	7513
"	15	7631	"	27 THRU 35	6138
"	16	9217	18	36	6962
"	17	11566	14	1	7030
"	18	10488	"	2 THRU 5	6045
"	19	11152	"	6	6731
"	20	11029	"	7	8610
11	21 THRU 24	6045	"	8	10993
12	14	6841	"	9	10011
"	15	6045	"	10	8139
"	16	6538	"	27	7474
"	17	10429	"	28	7070
"	18	8662	"	29	9463
"	19	7857	"	30	9918
"	20	6510	"	31 THRU 34	6045
"	21	6945	14	38	7146
"	22	10553	15	1	8995
"	23	10559	"	2	7665
"	24	12043	"	3, 4, 5	6993
"	25	11159	"	21, 22, 23	6143
"	26	7702	15	24	9663
"	27	6189	TRACT "F" 58,102 Ac ±		
"	28	7306	TRACT "H" 20,88 Ac ±		
"	29	6610	TRACT "I" 0,746 Ac ±		
"	30	7891	TRACT "K" 34,662 Ac ±		
"	31	6887	TRACT "T" 0,201 Ac ±		
"	32	6045			
"	33	6510			
"	34	8906			
"	35	11211			
"	36	7687			
"	37 THRU 41	6045			
12	42	6860			
13	1	6868			
"	2 THRU 8	6138			
"	9	7484			
"	10	9567			
"	11	12025			
"	12	9149			
"	13	7090			
"	14, 15	6231			
13	20 THRU 23	6510			



CURVE DATA			
ID	RADIUS	ARC	DELTA
A	25.00'	33.27'	90°00'00"
B	"	38.98'	89°19'48"
C	"	39.56'	90°40'12"
D	"	33.92'	77°44'02"
E	"	17.17'	39°20'45"
F	"	38.98'	89°19'48"
G	"	39.56'	90°40'12"
H	"	26.81'	56°51'41"
I	50.00'	17.19'	19°42'02"
J	"	59.01'	67°37'06"
K	"	43.50'	49°40'51"
L	"	27.90'	31°58'08"
M	"	52.96'	60°00'00"
N	248.00'	15.93'	3°40'47"
O	"	73.83'	17°08'29"
P	"	60.15'	15°59'45"
Q	"	42.00'	9°42'12"
R	216.00'	59.84'	15°56'45"
S	"	196.60'	57°55'27"
T	"	25.44'	65°58'12"
U	182.00'	32.06'	10°05'35"
V	"	141.67'	44°39'41"
W	"	44.84'	18°06'56"
X	248.00'	45.12'	10°25'55"
Y	"	66.40'	15°21'49"
Z	"	53.48'	12°21'17"
AA	216.00'	258.43'	65°58'12"
AB	182.00'	89.31'	25°07'01"
AC	"	129.45'	40°45'11"
AD	248.00'	64.00'	14°47'09"
AE	"	42.10'	9°43'36"
AF	216.00'	258.43'	65°58'12"
AG	182.00'	164.05'	21°38'49"
AH	"	54.71'	17°13'26"
AI	182.00'	46.84'	21°07'48"
AJ	160.00'	59.01'	"
AK	198.00'	26.08'	7°44'31"
AL	"	45.10'	13°23'17"
AM	67.00'	105.24'	90°00'00"
AN	100.00'	157.08'	"
AO	183.00'	28.31'	12°09'09"
AP	"	62.77'	22°43'53"
AQ	"	57.00'	24°33'20"
AR	"	13.94'	6°00'12"
AS	27.00'	42.10'	89°19'48"
AT	60.00'	93.55'	"
AU	93.00'	43.48'	29°51'57"
AV	"	54.00'	33°16'06"
AW	"	42.52'	26°11'45"
AX	700.00'	448.60'	36°43'06"
AY	750.00'	480.64'	"
AZ	800.00'	512.68'	"
BA	50.00'	40.77'	46°43'12"
BB	800.00'	43.52'	3°07'01"
BC	"	66.07'	4°43'06"
BD	"	403.09'	28°52'09"

PREPARED BY:
 STOTTLER STAGG & ASSOC.
 CAPT. CANAVERAL, FLA.
 JOB NO. 73222-B-218