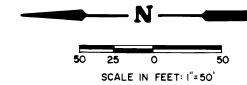
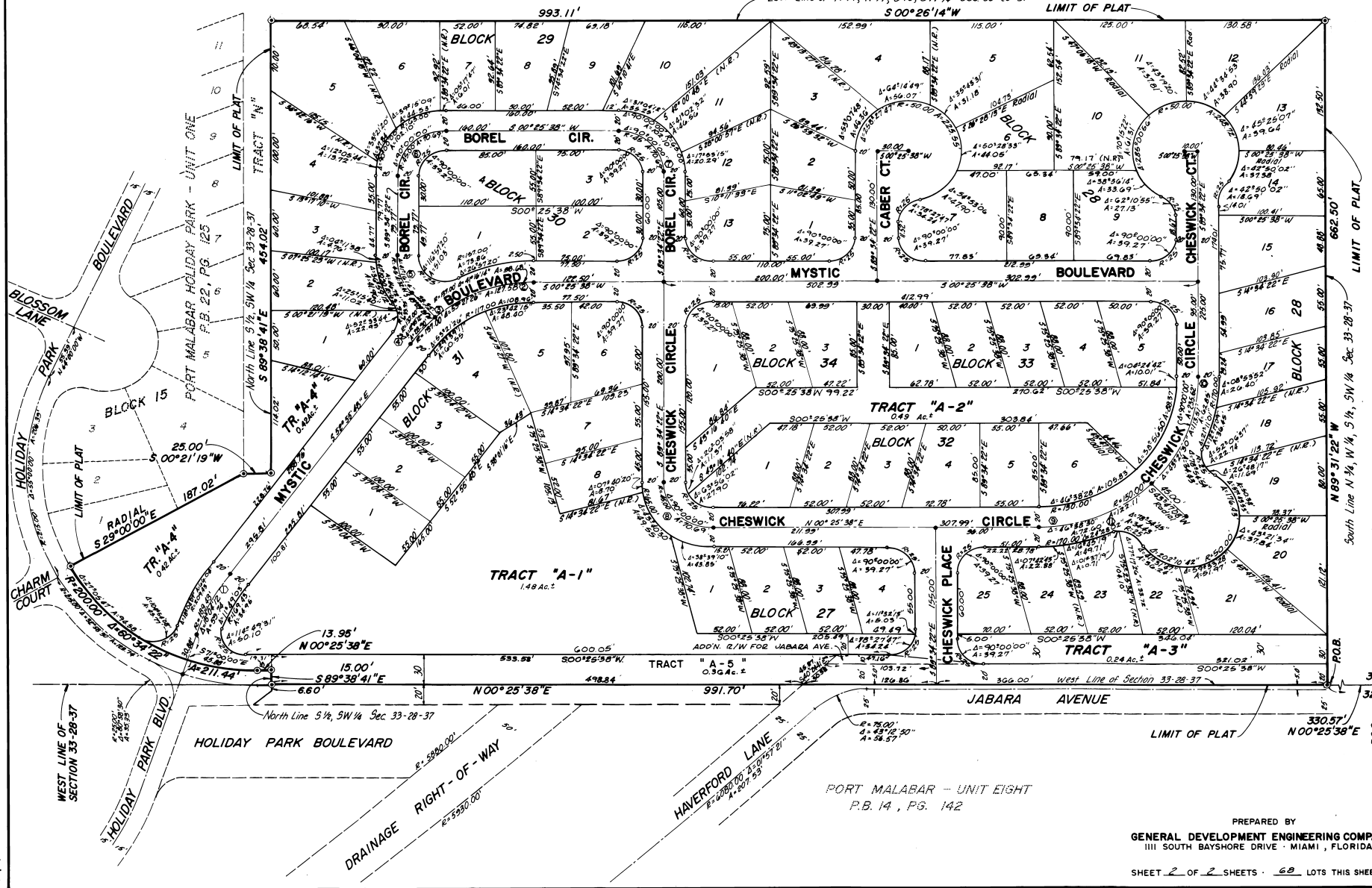


# PORT MALABAR HOLIDAY PARK UNIT TWO

A PORTION OF  
SECTION 33 TOWNSHIP 28 SOUTH RANGE 37 EAST  
CITY OF PALM BAY  
BREVARD COUNTY, FLORIDA



FLORIDA INDIAN RIVER LAND CO. (P.B. 1, PG. 164)  
East Line of N 1/4, W 1/4, S 1/2, SW 1/4 Sec 33-28-37  
S 00° 26' 14" W



CALCULATED BY: [Signature]  
DRAWN BY: [Signature]  
CHECKED BY: [Signature]  
APPROVED BY: [Signature]

PREPARED BY  
GENERAL DEVELOPMENT ENGINEERING COMPANY  
1111 SOUTH BAYSHORE DRIVE - MIAMI, FLORIDA

SHEET 2 OF 2 SHEETS 60 LOTS THIS SHEET