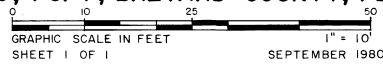


REPLAT OF A PORTION OF BEACH WOODS STAGE THREE PHASE ONE

A RESUBDIVISION OF LOTS 130, 131, 132 & 133 AND A PORTION
OF TRACT "A", BEACH WOODS STAGE THREE PHASE ONE
P.B. 26, PG. 4, BREVARD COUNTY, FLORIDA



SHEET 1 OF 1

SEPTEMBER 1980

LEGAL DESCRIPTION

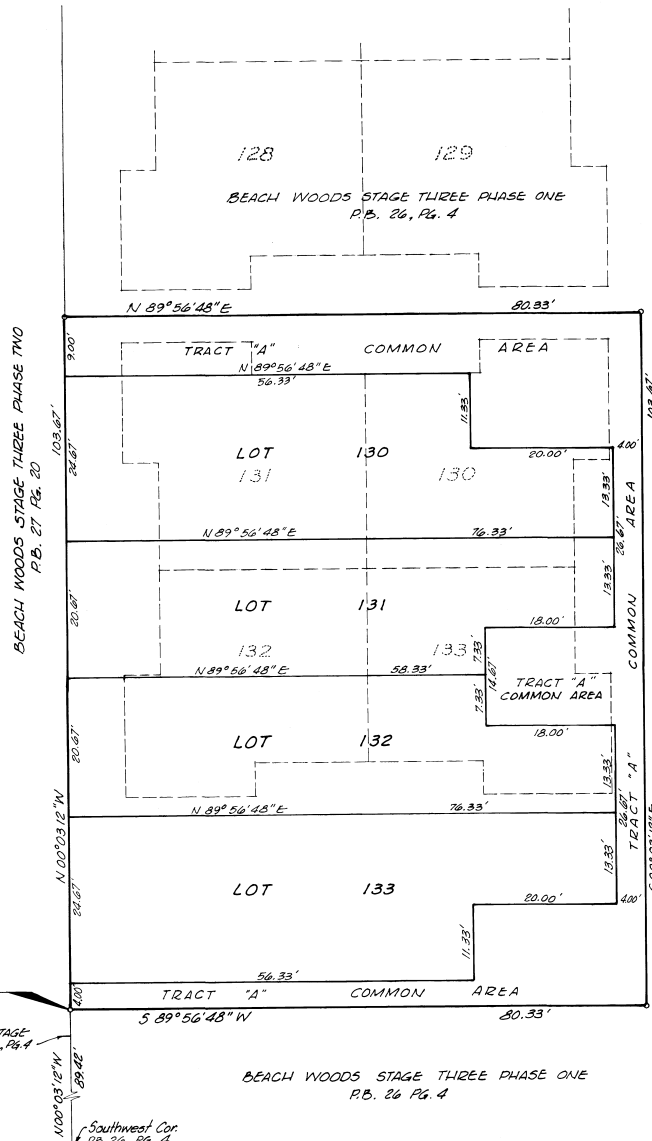
A portion of Section 21, Township 28 South, Range 38 East, Brevard County, Florida, being a resubdivision of Lots 130, 131, 132, & 133 and a portion of Tract "A", BEACH WOODS STAGE THREE PHASE ONE, according to the plat thereof as recorded in Plat Book 26 of Page 4 of the Public Records of Brevard County, Florida, being more particularly described as follows:

Commence at the Southwest corner of said plat; thence N 00° 03' 12" W along the West line of said plat for a distance of 89.42 feet to the Point of Beginning; thence continue N 00° 03' 12" W along said west line for a distance of 103.67 feet; thence N 89° 56' 48" E for a distance of 80.33 feet; thence S 00° 03' 12" E for a distance of 103.67 feet; thence S 89° 56' 48" W for a distance of 80.33 feet to the Point of Beginning. Containing 0.191 acres more or less.

1. For Amendment to Declaration of Restrictions see O.R.B. 2077, Page 1042.
2. For Declaration of Covenants, Conditions and Restrictions see O.R.B. 2035, Page 235.
3. For Articles of Incorporation of BEACH WOODS HOMEOWNER'S ASSOCIATION, INC. see O.R.B. 2035, Page 253.
4. For Bylaws of BEACH WOODS HOMEOWNER'S ASSOCIATION, INC. see O.R.B. 2035, Page 263.
5. An easement is hereby granted to Brevard County and to Public Utilities across TRACT "A" for the purpose of ingress and egress, and for the purpose of access to the installation and maintenance of public utilities and drainage; for the methods of access see site plan 78-07-005 on file with the Planning and Zoning Department of Brevard County, Florida.
6. BEACH WOODS OF BREVARD COUNTY, INC. in recording this REPLAT OF A PORTION OF BEACH WOODS STAGE THREE PHASE ONE has designated certain areas of land for common property known as TRACT "A" intended for use by the homeowners in said REPLAT OF A PORTION OF BEACH WOODS STAGE THREE PHASE ONE for ingress and egress, and for recreation and other related activities as delineated and described by site plan 78-25-005 on file with the Planning and Zoning Department of Brevard County, Florida.

SURVEYOR'S NOTE:

1. All bearings of Lot lines are parallel with or perpendicular to bearings shown.
2. Bearings are based on the Florida Coordinate System, East Zone.



POINT OF BEGINNING

West line BEACH WOODS STAGE THREE PHASE ONE, P.B. 26, PG. 4

Southwest Cor
P.B. 26, PG. 4

Prepared by:
STOTTLED, STAGG & ASSOCIATES
CAPE CANAVERAL, FLORIDA
JOB NO. 78072

PLAT BOOK 28
AND PAGE 46

DEDICATION

KNOW ALL MEN BY THESE PRESENTS, that the Corporation named below, being the owner in fee simple of the lands described in REPLAT OF A PORTION OF BEACH WOODS STAGE THREE PHASE ONE hereby dedicates said lands and plat for the uses and purposes therein expressed and dedicates the easements shown hereon to the perpetual use of the public, and IN WITNESS WHEREOF, has caused these presents to be signed and attested to by the officers named below and its corporate seal to be affixed hereto on SEP 5, 1980

By Thomas E. Wasdin President
THOMAS E. WASDIN
Attest: Margaret W. Carlisle BEACH WOODS OF BREVARD COUNTY, INC.
Signed and sealed in the presence of P.O. BOX 368
John W. Meigs MELBOURNE BEACH FLORIDA 32951

STATE OF FLORIDA COUNTY OF BREVARD
THIS IS TO CERTIFY, That on 5 SEPTEMBER 1980 before me, an officer duly authorized to take acknowledgments in the State and County aforesaid, personally appeared THOMAS E. WASDIN and

respectively President and of the above named corporation incorporated under the laws of the State of FLORIDA, to me known to be the individuals and officers described in and who executed the foregoing Dedication and severally acknowledged the execution thereof to be their free act and deed as such officers thereto duly authorized; that the official seal of said corporation is duly affixed thereto; and that the said Dedication is the act and deed of said corporation.

IN WITNESS WHEREOF, I have hereto set my hand and seal on the above date.
Wanda E. Schank
NOTARY PUBLIC

My Commission Expires July 24, 1981
Notary Public, Florida, State at Large
Florida State Bar No. 12345
Member State Bar Insurance Agency

CERTIFICATE OF SURVEYOR

KNOW ALL MEN BY THESE PRESENTS, that the undersigned, being a licensed and registered land surveyor, does hereby certify that on MAY 1978 he completed the survey of the lands as shown in the foregoing plat, that said plat is a true and correct representation of the lands therein described and that the same reference monuments have been placed by station thereon as required by Chapter 229, Florida Statutes; and that said plat is located in Brevard County, Florida.

David A. Deithorn Registered Professional Surveyor
No. 12345

CERTIFICATE OF APPROVAL BY MUNICIPALITY

THIS IS TO CERTIFY, That on _____ the _____ approved the foregoing plat.
SEAL
ATTEST: _____ MAYOR.
_____ CITY CLERK.

CERTIFICATE OF ACCEPTANCE OF DEDICATION BY BOARD OF COUNTY COMMISSIONERS

THIS IS TO CERTIFY That the Board of County Commissioners hereby accepts all easements and areas dedicated for public use on this plat.
ATTEST: John W. Meigs Chairman of the Board
Robert W. ... Clerk of the Board

CERTIFICATE OF APPROVAL BY BOARD OF COUNTY COMMISSIONERS

THIS IS TO CERTIFY, That on SEPT. 18, 1980 the foregoing plat was approved by the Board of County Commissioners of Brevard County, Florida.
John W. Meigs Chairman of the Board
Robert W. ... Clerk of the Board
Approved: Robert W. ... County Engineer

CERTIFICATE OF APPROVAL BY PLANNING AND ZONING COMMISSION

THIS IS TO CERTIFY, That on SEP 18, 1980 the Zoning Commission of Brevard County approved the foregoing plat.
John W. Meigs Planning and Zoning Director

CERTIFICATE OF CLERK

I HEREBY CERTIFY, That I have examined the foregoing plat and find that it complies in form with all the requirements of Chapter 127, Florida Statutes, and was filed for recording on SEP 18, 1980 at 2:49 PM, File No. 549023.
Robert W. ... Clerk of the Circuit Court in and for Brevard County, Fla.