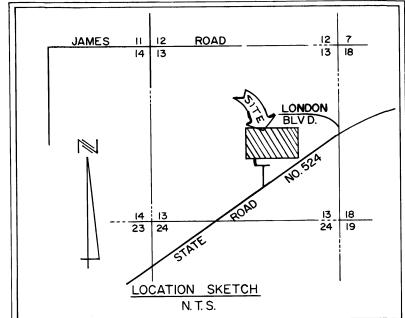
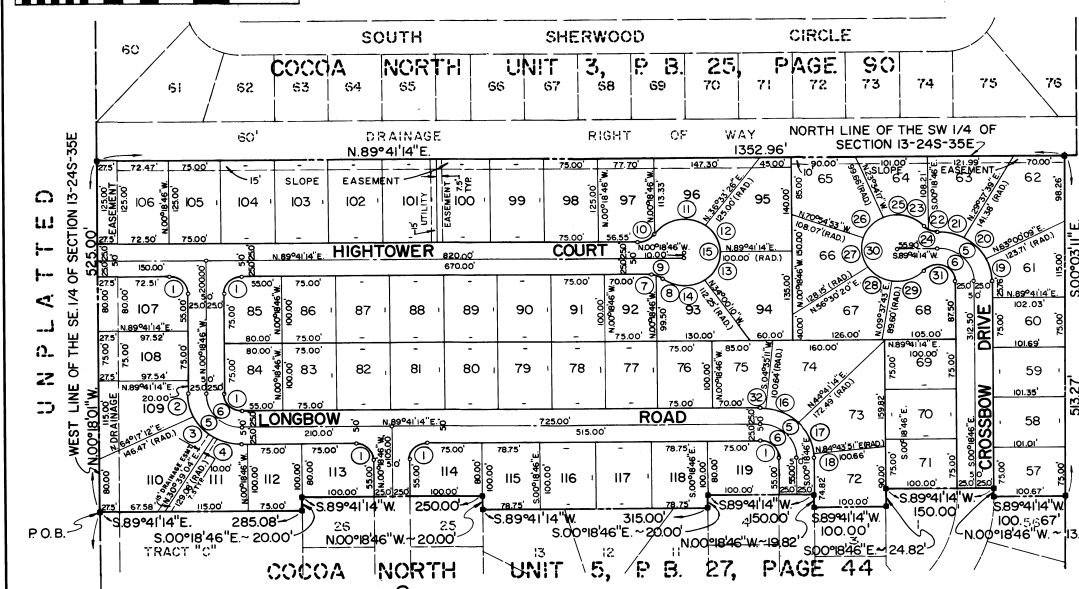
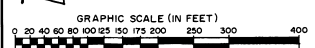


# COCOA NORTH UNIT 6

A SUBDIVISION IN SECTION 13, TOWNSHIP 24 SOUTH, RANGE 35 EAST  
CITY OF COCOA BREVARD COUNTY FLORIDA

### DESCRIPTION:

COMMENCE AT THE S. 1/4 CORNER OF SECTION 13, TOWNSHIP 24 SOUTH, RANGE 35 EAST, BREVARD COUNTY, FLORIDA; THENCE RUN N.00°18'01"W. ALONG THE WEST LINE OF THE SE. 1/4 OF SECTION 13, TOWNSHIP 24 SOUTH, RANGE 35 EAST, A DISTANCE OF 2132.47 FEET TO THE POINT OF BEGINNING; THENCE CONTINUE N.00°18'01"W. ALONG THE WEST LINE OF THE SE. 1/4 OF SECTION 13, TOWNSHIP 24 SOUTH, RANGE 35 EAST, A DISTANCE OF 525.00 FEET; THENCE RUN N.89°41'14"E. ALONG THE NORTH LINE OF SW 1/4 OF SECTION 13, TOWNSHIP 24 SOUTH, RANGE 35 EAST, A DISTANCE OF 1352.96 FEET; THENCE RUN S.89°41'14"W. 100.67 FEET; THENCE RUN N.00°18'46"W. 13.26 FEET; THENCE RUN S.89°41'14"W. 150.00 FEET; THENCE RUN S.00°18'46"E. 24.82 FEET; THENCE RUN S.89°41'14"W. 100.00 FEET; THENCE RUN N.00°18'46"W. 19.82 FEET; THENCE RUN S.89°41'14"W. 150.00 FEET; THENCE RUN S.00°18'46"E. 20.00 FEET; THENCE RUN S.89°41'14"W. 315.00 FEET; THENCE RUN N.00°18'46"W. 20.00 FEET; THENCE RUN S.89°41'14"W. 250.00 FEET; THENCE RUN S.00°18'46"E. 20.00 FEET; THENCE RUN S.89°41'14"W. 285.08 FEET TO THE POINT OF BEGINNING. SAID PARCEL CONTAINING 16.018 ACRES.



CURVE DATA					
CURVE	DELTA	RADIUS	TAN.	ARC	CHORD
1	90°00'00"	2500'	2500'	39.27'	35.36'
2	25°24'02"	75.00'	16.90'	32.25'	32.98'
3	32°38'09"	75.00'	22.67'	44.03'	43.40'
4	30°27'49"	75.00'	20.77'	40.53'	40.04'
5	90°00'00"	75.00'	75.00'	117.81'	106.07'
6	90°00'00"	50.00'	50.00'	78.54'	70.71'
7	11°32'10"	25.00'	2.53'	5.03'	5.03'
8	25°20'01"	25.00'	5.62'	11.09'	10.96'
9	36°52'11"	25.00'	8.33'	16.09'	15.81'
10	57°46'08"	25.00'	13.79'	25.21'	24.15'
11	94°38'20"	50.00'	54.22'	82.59'	73.51'
12	53°07'48"	50.00'	25.00'	46.36'	44.72'
13	56°18'36"	50.00'	26.76'	49.14'	47.19'
14	70°33'36"	50.00'	35.38'	61.58'	57.58'
15	27°4'38'21"	50.00'	12.99'	23.97'	23.67'
16	40°06'03"	75.00'	27.37'	52.49'	51.43'
17	40°02'38"	75.00'	27.33'	52.42'	51.36'
18	4°57'22"	75.00'	3.25'	6.49'	6.49'
19	26°41'05"	75.00'	17.79'	34.93'	34.62'
20	37°22'30"	75.00'	22.48'	43.69'	43.07'
21	28°56'25"	75.00'	20.09'	39.19'	38.75'
22	34°03'16"	25.00'	7.66'	14.86'	14.64'
23	14°08'03"	25.00'	3.10'	6.17'	6.15'
24	48°11'19"	25.00'	11.18'	21.03'	20.41'
25	71°26'51"	50.00'	36.96'	62.35'	58.39'
26	47°20'36"	50.00'	21.92'	41.32'	40.15'
27	52°34'47"	50.00'	24.70'	48.88'	44.23'
28	46°52'37"	50.00'	21.68'	40.91'	39.78'
29	58°07'49"	50.00'	27.79'	50.73'	48.58'
30	266°22'40"	50.00'	—	24.119'	—
31	138°11'19"	25.00'	65.45'	60.30'	46.71'
32	4°53'57"	75.00'	3.21'	6.41'	6.41'

- NOTES
1. DENOTES P.R.M. (EXISTING)
  2. DENOTES PERMANENT CONTROL POINT (P.C.P.)
  3. A 5' UTILITY EASEMENT IS RESERVED ON THE REAR AND SIDES OF ALL LOTS EXCEPT THOSE LINES ABUTTING STREET RIGHT OF WAYS OR UNLESS OTHERWISE NOTED.
  4. P.R.M.'s and P.C.P.'s ARE R.L.S. NO.1542 UNLESS OTHERWISE NOTED.
  5. DRAINAGE EASEMENTS ARE AS SHOWN.

prepared by  
**TDC**  
DEVELOPERS  
ORLANDO, FLORIDA (305)273-4562

PLAT BOOK 28  
AND PAGE 39

### DEDICATION

KNOW ALL MEN BY THESE PRESENTS, That the Corporation named below, being the owner in fee simple of the lands described in COCOA NORTH UNIT 6

hereby dedicates said lands and plot for the uses and purposes therein expressed and dedicates the streets, alleys, thoroughfares, parks, canals and drainage easements shown hereon to the perpetual use of the public, and IN WITNESS WHEREOF, he has caused these presents to be signed and attested to by the officers named below and its corporate seal to be affixed hereto on October 2, 1980  
By: James H. Barr President  
Attest: Virginia H. Barr Secretary

Signed and sealed in the presence of Christy Kuller  
AmeriFirst Development Co. of Central Florida  
455 S. Orange Ave.  
Orlando, Florida

STATE OF FLORIDA COUNTY OF BREVARD  
THIS IS TO CERTIFY, That on October 2, 1980 before me, an officer duly authorized to take acknowledgments in the State and County aforesaid, personally appeared JAMES H. Barr and Virginia H. Barr respectively, the President and Secretary of the above corporation, known to me to be the individuals and officers described in and who executed the foregoing Dedication and severally acknowledged the execution thereof to be their free act and deed as such officers thereto duly authorized; that the official seal of said corporation is duly affixed thereto; and that the said Dedication is the act and deed of said corporation.

IN WITNESS WHEREOF, I have hereto set my hand and seal on the above date.  
Betty J. Brown  
NOTARY PUBLIC  
Notary Public, State of Florida at Large  
My Commission Expires March 9, 1983

### CERTIFICATE OF SURVEYOR

KNOW ALL MEN BY THESE PRESENTS, That the undersigned, being a licensed and registered land surveyor, does hereby certify that on Oct 2, 1980 he completed the survey of the lands as shown in the foregoing plat; that said plat is a correct representation of the lands therein described and platted; that permanent reference monuments have been placed as shown thereon and in accordance with Chapter 177, Florida Statutes; and that said land is located in Brevard County, Florida. Dated Oct 2, 1980  
John C. Brown Registration No. 1542

### CERTIFICATE OF APPROVAL BY MUNICIPALITY

THIS IS TO CERTIFY, That on May 26, 1980 the Cocoa City Council approved the foregoing plat.  
ATTEST: John C. Brown MAYOR  
CITY CLERK

### CERTIFICATE OF ACCEPTANCE OF DEDICATION BY BOARD OF COUNTY COMMISSIONERS

THIS IS TO CERTIFY That the Board of County Commissioners hereby accepts all roads, streets, alleys, thoroughfares, parks, canals, drainage easements, utility easements, lakes, pathways, open spaces and other rights of way, easements and areas dedicated for public use on this plat.

Chairman of the Board  
Clerk of the Board

### CERTIFICATE OF APPROVAL BY BOARD OF COUNTY COMMISSIONERS

THIS IS TO CERTIFY, That on May 26, 1980 the foregoing plat was approved by the Board of County Commissioners of Brevard County, Florida.  
Chairman of the Board: N/A  
Attest: N/A  
Clerk of the Board:  
Approved: N/A  
County Engineer

### CERTIFICATE OF APPROVAL BY PLANNING AND ZONING COMMISSION

THIS IS TO CERTIFY, That on June 11, 1980 the Zoning Commission of the above County approved the foregoing plat.  
Richard Robertson  
Planning and Zoning Director

### CERTIFICATE OF CLERK

I HEREBY CERTIFY, That I have examined the foregoing plat and find that it complies in form with all the requirements of Chapter 177, Florida Statutes, and was filed for record on 11/15/1980 at 2:15 PM in No. 57462  
R. W. Williams  
Clerk of the Circuit Court  
In and for Brevard County, Florida