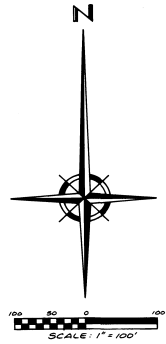


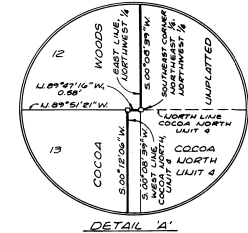
# COCOA WOODS

A Subdivision Lying in Section 13, Township 24 S., Range 35 E., Brevard County, Florida.

Sheet 2 of 2



SEE SHEET 1 OF 2



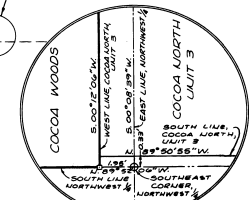
DETAIL 'A' U.T.S.

SEE DETAIL 'A'

COCOA NORTH  
UNIT 1  
P.B. 26, PG. 44

COCOA NORTH  
UNIT 2  
P.B. 25, PG. 90

SEE DETAIL 'B'



DETAIL 'B' U.T.S.

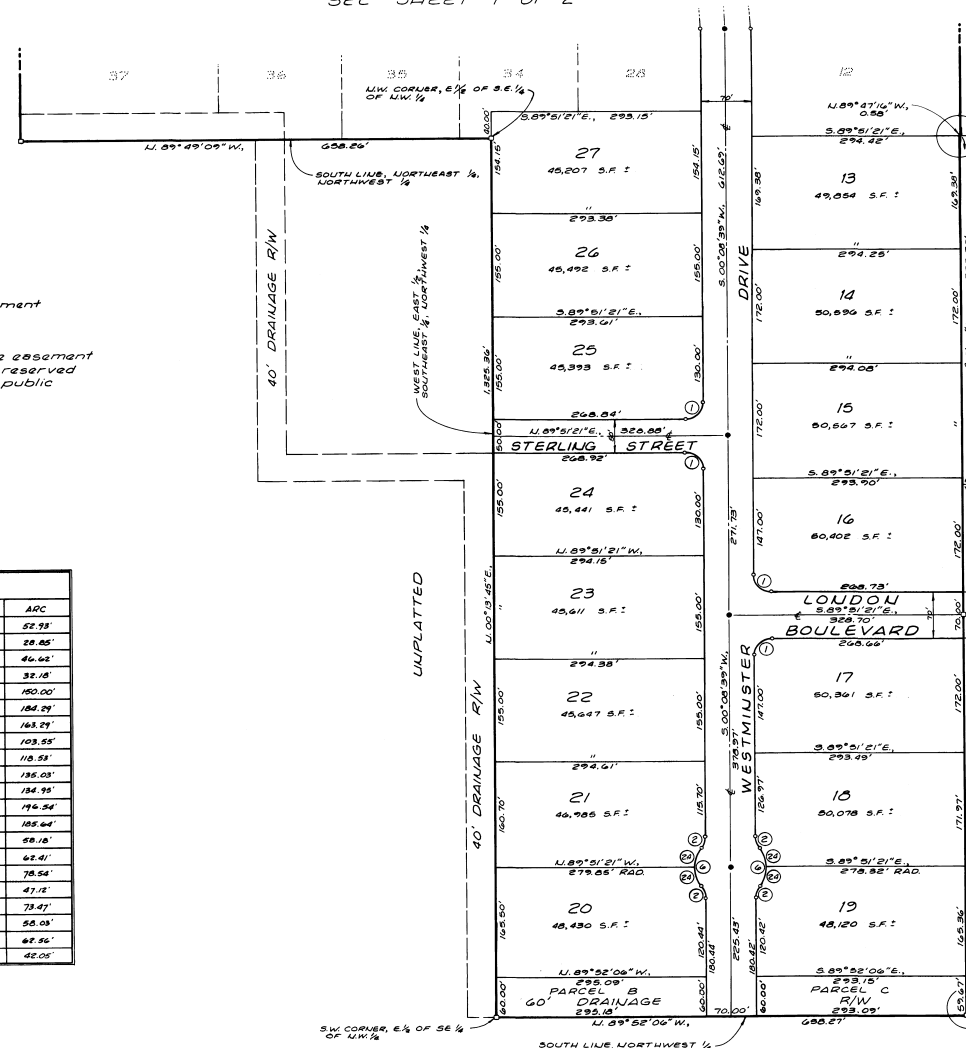
### SURVEYORS NOTES

- o Denotes permanent reference monument
- Denotes permanent control point

Unless otherwise shown a 7.50 foot wide easement along all side, and rear lot lines, is hereby reserved for the installation and maintenance of public utilities, and drainage.

### CURVE DATA

DELTA	RADIUS	ARC	DELTA	RADIUS	ARC
1 90° 00' 00"	25.00'	39.27'	21 121° 17' 46"	25.00'	52.78'
2 36° 52' 12"	25.00'	16.09'	22 66° 06' 33"	25.00'	28.85'
3 48° 11' 23"	25.00'	21.03'	23 106° 50' 31"	25.00'	46.62'
4 186° 22' 46"	50.00'	162.64'	24 36° 52' 12"	50.00'	32.18'
5 276° 22' 46"	50.00'	261.19'	25 11° 06' 52"	773.21'	150.00'
6 75° 44' 24"	50.00'	64.35'	26 18° 39' 18"	773.21'	154.29'
7 16° 41' 37"	808.27'	257.36'	27 12° 05' 57"	773.21'	163.29'
8 11° 28' 23"	868.27'	176.22'	28 07° 40' 20"	773.21'	103.25'
9 44° 32' 27"	773.27'	401.13'	29 14° 37' 11"	464.31'	118.53'
10 27° 56' 41"	808.27'	394.22'	30 16° 29' 22"	464.31'	136.03'
11 22° 50' 01"	843.27'	322.18'	31 16° 28' 44"	464.31'	134.95'
12 41° 46' 18"	808.27'	481.59'	32 18° 21' 18"	843.27'	194.34'
13 30° 38' 36"	429.51'	229.09'	33 12° 36' 48"	843.27'	156.64'
14 18° 38' 44"	394.51'	123.81'	34 66° 40' 08"	50.00'	58.18'
15 47° 35' 17"	464.51'	388.31'	35 71° 31' 20"	50.00'	62.41'
16 79° 12' 39"	429.51'	144.01'	36 90° 00' 00"	50.00'	78.54'
17 49° 46' 15"	429.51'	373.10'	37 54° 00' 00"	50.00'	47.12'
18 28° 09' 02"	25.00'	38.46'	38 84° 11' 23"	50.00'	73.47'
19 18° 19' 16"	394.51'	78.61'	39 66° 30' 08"	50.00'	58.03'
20 75° 35' 31"	25.00'	32.79'	40 71° 41' 18"	50.00'	67.56'
			41 48° 11' 23"	50.00'	42.05'



ENGINEERS & SURVEYORS

MERRITT ISLAND, FLORIDA

255 FORTENBERRY ROAD • P.O. BOX 217 • PHONE 305/452-8340