

# COLONY PARK NORTH-UNIT 3

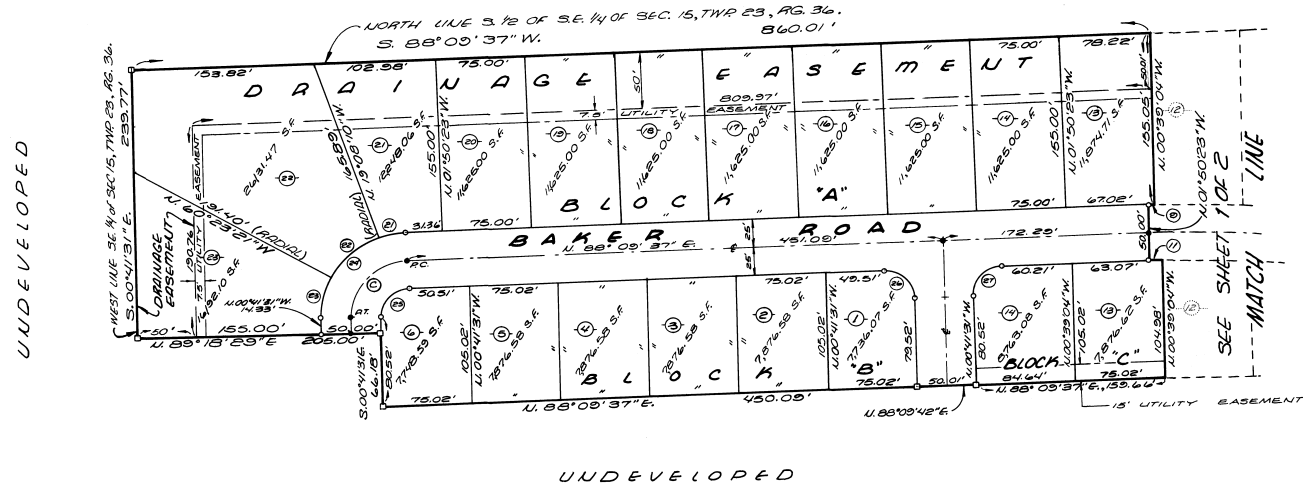
A Subdivision in Section 15, T. 23 S., R.G. 36 E., Brevard County, Florida.

### SURVEYOR'S NOTES

Unless otherwise shown, a 7.5 foot wide easement along all side and rear lot lines, is hereby reserved, for the installation and maintenance of public utilities and drainage.  
Basis of bearings assumed for computational purposes and do not refer to the true meridian.

- PC Denotes point of curvature.
- PT Denotes point of tangency.
- ⊙ Denotes curve.
- ⊙ Denotes lot number.
- Denotes permanent reference monument.
- Denotes permanent control point.

UNDEVELOPED



SCALE 1"=60'  
60 50 40 30 20 10 0

CURVE	DATA		
	DELTA	RAD	ARC
0	88°15'08"	50.00'	72.53'
1	00°14'03"	1424.55'	725'
11	00°25'17"	1424.55'	11.55'
21	17°17'47"	75.00'	25.64'
22	41°15'11"	75.00'	64.00'
23	30°16'10"	75.00'	39.67'
24	88°51'08"	75.00'	116.31'
25	88°51'08"	25.00'	39.77'
26	31°08'55"	25.00'	39.77'
27	88°51'08"	25.00'	39.77'



ENGINEERS & SURVEYORS

MERRITT ISLAND, FLORIDA

255 FORTENBERRY RD. · P.O. BOX 217 · PHONE 305/452-8340