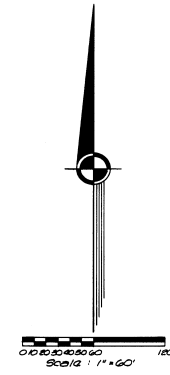
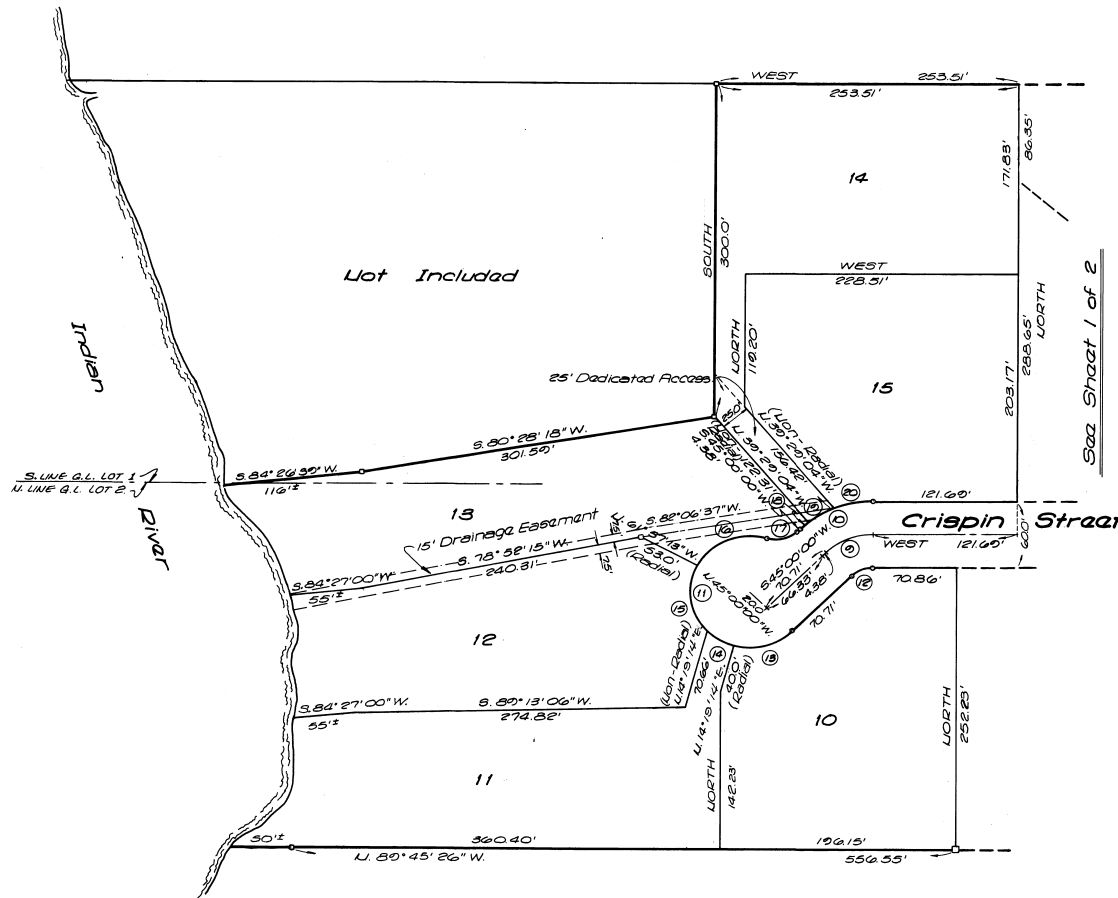


ANDY ESTATES

A SUBDIVISION LYING IN A PORTION OF GOVT LOTS 1 & 2,
SECTION 6, TOWNSHIP 26 SOUTH, RANGE 37 EAST, BREVARD COUNTY, FLORIDA.



NOTES:

- Danotas Permanent Reference Monument
- Danotas Permanent Control Point unless otherwise noted
- A strip of land 15 feet wide along all rear, front, and side lot lines is hereby reserved for the installation and maintenance of public utilities.
- Basis of Bearings Assumed for Computational Purposes And do not Refer to the true Meridian.

FOR MORTGAGEE JOINDER IN DEDICATION
SEE O.E. BOOK 2246, PAGE 292
2246 710

FOR RESTRICTIONS See O.R. BOOK 2246 PAGE 714

| LR | Delta | Radius | Arc | Chord | Tangent |
|----|------------|--------|---------|--------|---------|
| 1 | 110°10'06" | 250' | 43.07' | 41.0' | 35.22' |
| 2 | 60°40'54" | 250' | 30.47' | 28.62' | 17.45' |
| 3 | 90°00'00" | 250' | 39.27' | 35.36' | 25.0' |
| 4 | 42°50'00" | 250' | 13.60' | 13.26' | 9.31' |
| 5 | 265°40'00" | 500' | 231.94' | — | — |
| 6 | 89°52'48" | 500' | 78.44' | 70.64' | 49.90' |
| 7 | 73°44'23" | 500' | 64.35' | 60.0' | 37.50' |
| 8 | 28°18'26" | 500' | 24.70' | 24.45' | 12.61' |
| 9 | 45°00'00" | 550' | 43.20' | 42.10' | 22.78' |
| 10 | 45°00'00" | 550' | 66.76' | 65.06' | 35.21' |
| 11 | 242°10'55" | 500' | 211.34' | — | — |
| 12 | 45°00'00" | 250' | 19.64' | 19.13' | 10.36' |
| 13 | 50°10'14" | 500' | 51.77' | 49.40' | 28.47' |
| 14 | 20°50'10" | 500' | 26.17' | 25.87' | 13.30' |
| 15 | 73°44'23" | 500' | 64.35' | 60.0' | 37.50' |
| 16 | 70°08'08" | 500' | 60.06' | 63.70' | 41.32' |
| 17 | 62°10'55" | 250' | 27.13' | 25.82' | 15.08' |
| 18 | 05°30'56" | 850' | 3.18' | 2.18' | 4.00' |
| 19 | 17°06'17" | 850' | 25.33' | 25.28' | 12.78' |
| 20 | 22°22'47" | 850' | 33.20' | 32.99' | 16.81' |



ENGINEERS & SURVEYORS

MERRITT ISLAND, FLORIDA

255 FORTENBERRY ROAD P.O. BOX 217 PHONE 305 / 452-8340