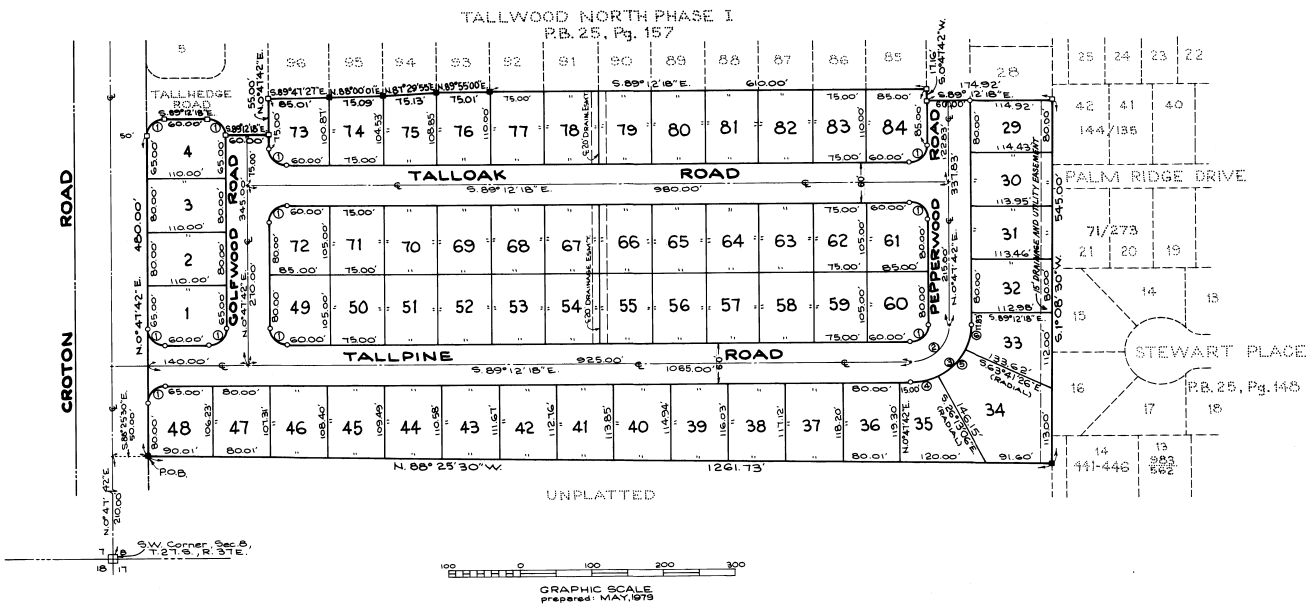
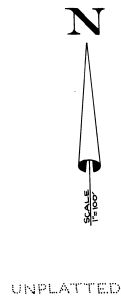


TALLWOOD NORTH PHASE II

SECTION 8, TOWNSHIP 27 SOUTH, RANGE 37 EAST,
CITY OF MELBOURNE, BREVARD COUNTY, FLORIDA



LEGAL DESCRIPTION: From the Southwest corner of Section 8, Township 27 South, Range 37 East, run N.0°47'42"E, a distance of 210.00 feet; thence run S.88°25'30"E, a distance of 50.00 feet to the Point-of-Beginning; thence run N.0°47'42"E, a distance of 480.00 feet to the point-of-curvature of a circular curve concave to the southeast, said curve having a radius of 25.00 feet; thence run northeasterly along the arc of said curve a distance of 39.27 feet, having a central angle of 90°00'00" to the point-of-tangency; thence run S.89°12'18"E, a distance of 60.00 feet to the point-of-curvature of a circular curve concave to the southwest, said curve having a radius of 25.00 feet; thence run southeasterly along the arc of said curve a distance of 39.27 feet, having a central angle of 90°00'00" to a point; thence run S.89°12'18"E, a distance of 60.00 feet; thence run N.0°47'42"E, a distance of 55.00 feet; thence run S.89°41'21"E, a distance of 85.01 feet; thence run N.88°00'01"E, a distance of 79.09 feet; thence run N.87°29'55"E, a distance of 75.13 feet; thence run N.88°58'00"E, a distance of 15.01 feet; thence run S.89°12'18"E, a distance of 610.00 feet; thence run S.0°47'42"W, a distance of 171.16 feet; thence run S.89°12'18"E, a distance of 174.92 feet; thence run S.1°08'30"W, a distance of 545.00 feet; thence run N.88°25'30"W, a distance of 1261.73 feet to the Point-of-Beginning, containing 15.751 acres, more or less.

NOTES:

- 1) Basis of bearing structure is assumed for computation purposes only and does not necessarily represent the true meridian.
- 2) A strip of land 10 feet wide along all rear and 5 feet wide along all side lot lines (each lot) shall be reserved for the installation and maintenance of public utilities, unless otherwise noted. This is a permanent easement.
- 3) □ - Indicates Permanent Reference Monument, Found.
- 4) ■ - Indicates Permanent Reference Monument, Set.
- 5) ○ - Indicates Permanent Control Point, Set.

NO	RADIUS	DELTA	ARC	CHORD	TANGENT
1	25.00'	90°00'00"	39.27'	35.36'	25.00'
2	55.00'	90°00'00"	86.99'	77.78'	55.00'
3	85.00'	90°00'00"	133.52'	120.21'	85.00'
4	85.00'	27°00'48"	40.08'	39.70'	20.42'
5	85.00'	37°28'20"	55.89'	54.61'	28.83'
6	85.00'	25°30'52"	37.85'	37.54'	19.24'

JOINDERS IN DEDICATION ORB 2216 PG. 812
 RESTRICTIONS 2216 813
 JOINDERS IN RESTRICTIONS 2216 814
 2216 817
 2216 818



prepared by: PENINSULA ENGINEERING & TESTING COMPANY

PLAT BOOK 26
AND PAGE 61

DEDICATION

KNOW ALL MEN BY THESE PRESENTS, That the Corporation named below, being the owner in fee simple of the lands described in

TALLWOOD NORTH PHASE II

hereby dedicates said lands, and plat for the uses and purposes therein expressed and dedicates the streets, alleys, thoroughfares, parks, canals and drainage easements shown hereon to the perpetual use of the public, and IN WITNESS WHEREOF, has caused these presents to be signed and attested to by the officers named below and its corporate seal to be affixed hereto on

By *Edward M. Carull*

Attest: *Michael C. Ballard*

Signed and sealed in the presence of *John C. Kallal*
Michael C. Ballard

STATE OF FLORIDA COUNTY OF BREVARD

THIS IS TO CERTIFY, that on 3 Dec. 1979 before me, an officer duly authorized to take acknowledgments in the State and County aforesaid, personally appeared *Edward M. Carull* and *Michael C. Ballard* respectively

of the above named corporation incorporated under the laws of the State of Florida, to me known to be the individuals and officers described in and who executed the foregoing Dedication and severally acknowledged the execution thereof in their free act and deed as such officers thereunto duly authorized; that the official seal of said corporation is duly affixed thereto; and that the said Dedication is the act and deed of said corporation.

IN WITNESS WHEREOF, I have hereunto set my hand and seal on the above date.

Edward M. Carull
NOTARY PUBLIC

My Commission Expires *June 15, 1983*
Notary for American Title Company SEAL

CERTIFICATE OF SURVEYOR

KNOW ALL MEN BY THESE PRESENTS, That the undersigned, being licensed and registered land surveyor, does hereby certify that on *October 13, 1979* he completed the survey of the lands as shown in the foregoing plat; that said plat is a true and correct representation of the lands therein described and plat; that permanent reference monuments have been placed as shown thereon as required by Chapter 177, Florida Statutes; and that said land is located in Brevard County, Florida. Dated *NOVEMBER 26, 1979*

Michael P. M. Angler Registration No. *2360*

CERTIFICATE OF APPROVAL

BY MUNICIPALITY

THIS IS TO CERTIFY, that on *January 22, 1980* the *Melbourne City Council* approved the foregoing plat.

Alamy C. Stoker
CITY CLERK

CERTIFICATE OF ACCEPTANCE OF DEDICATION BY BOARD OF COUNTY COMMISSIONERS

THIS IS TO CERTIFY That the Board of County Commissioners hereby accepts all roads, streets, alleys, thoroughfares, parks, canals, drainage easements, utility easements, lakes, pathways, open spaces and other rights of way, easements and areas dedicated for public use on this plat.

Chairman of the Board

Attest: *Clerk of the Board*

CERTIFICATE OF APPROVAL BY BOARD OF COUNTY COMMISSIONERS

THIS IS TO CERTIFY, That on *1-20-80* the foregoing plat was approved by the Board of County Commissioners of Brevard County, Florida.

Chairman of the Board

Attest: *Clerk of the Board*

Approved *County Engineer*

CERTIFICATE OF APPROVAL BY PLANNING AND ZONING COMMISSION

THIS IS TO CERTIFY, That on *1-20-80* the Zoning Commission of the above *approved the foregoing plat.*

CERTIFICATE OF CLERK

I HEREBY CERTIFY, That I have examined the foregoing plat and find that it complies in form with all the requirements of Chapter 177, Florida Statutes, and was filed for record on *February 24, 1980* at *11:34 AM*, file No. *3893*

Edward M. Carull
Clerk of the Circuit Court in and for Brevard County, Fla.