



TORTOISE ISLAND, PHASE TWO, UNIT ONE, P.U.D.

Plat Book 26
Page 40

A SUBDIVISION OF A PORTION OF SECTION 27, TOWNSHIP 26 SOUTH, RANGE 37 EAST, BREVARD COUNTY, FLORIDA

No. 74233

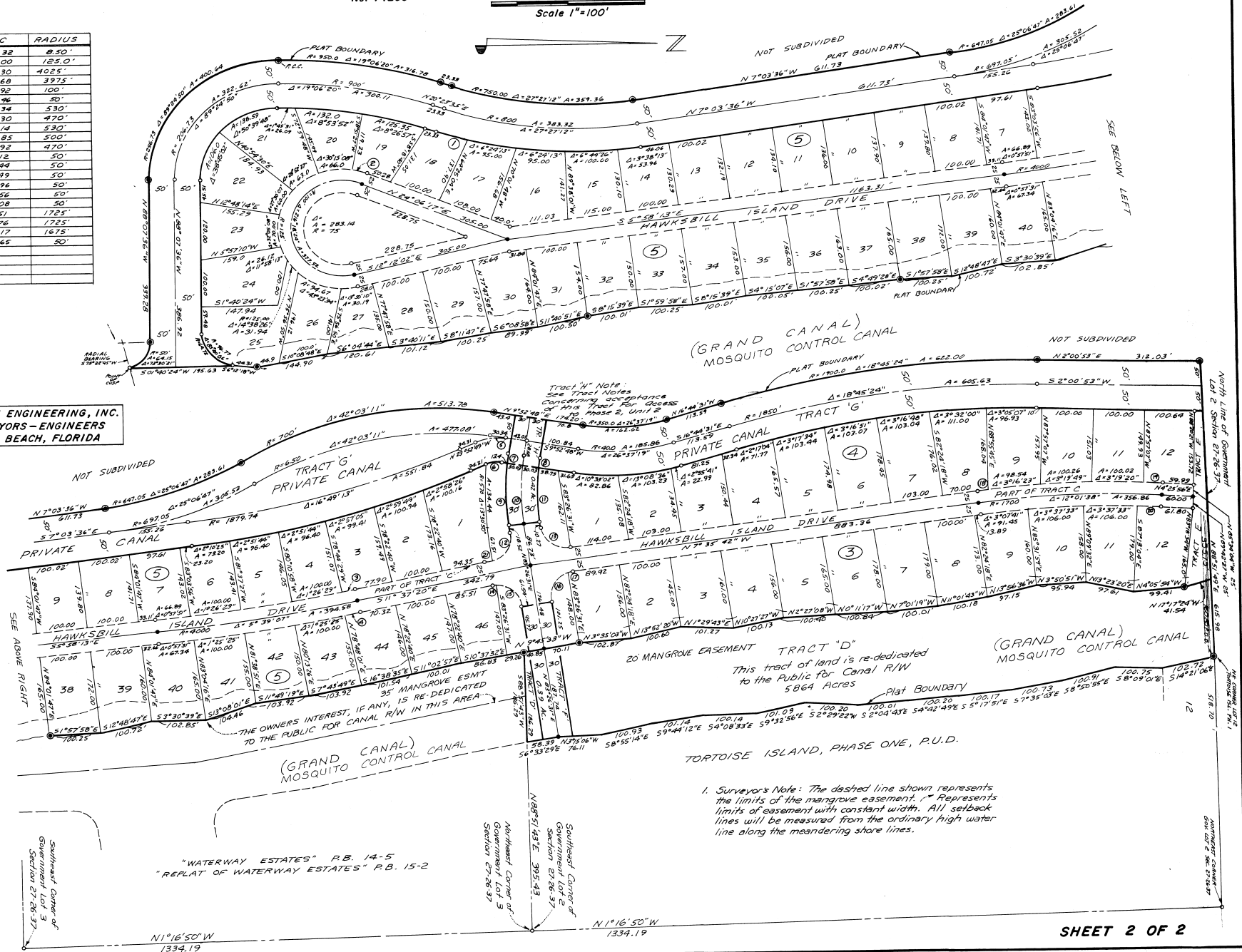
0 50 150 300

MAY, 1979

Scale 1"=100'

I.D.	DELTA	ARC	RADIUS
1	4°10'06"	62.32	8.50'
2	13°43'04"	30.00	125.0'
3	0°21'49"	25.30	4025'
4	0°25'21"	29.68	3975'
5	33°45'37"	58.92	100'
6	33°45'37"	29.96	30'
7	2°18'27"	21.94	530'
8	2°35'47"	21.30	470'
9	14°10'36"	131.14	530'
10	14°29'03"	143.85	500'
11	13°23'16"	113.92	470'
12	84°56'09"	74.12	50'
13	9°10'21"	79.44	50'
14	16°36'04"	19.99	50'
15	35°03'51"	82.94	50'
16	77°24'44"	67.56	50'
17	11°32'03"	10.08	50'
18	0°42'52"	21.51	1725'
19	0°23'14"	41.76	1725'
20	0°18'51"	48.17	1675'
21	06°28'22"	5.65	50'

ALLEN ENGINEERING, INC.
SURVEYORS-ENGINEERS
COCOA BEACH, FLORIDA



1. Surveyor's Note: The dashed line shows the limits of the mangrove easement. * Represents limits of easement with constant width. All setback lines will be measured from the ordinary high water line along the meandering shore lines.

"WATERWAY ESTATES" P.B. 14-5
"REFLAT OF WATERWAY ESTATES" P.B. 15-2