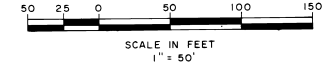


FIRST REPLAT IN PORT MALABAR COUNTRY CLUB UNIT FIVE

PLAT BOOK 26
PAGE 18



LOT 20
FLORIDA INDIAN RIVER LAND CO. P.B. I PG. 164

PORT MALABAR COUNTRY CLUB UNIT EIGHT P.B. 25 PG. 127

CENTERLINE OF STREET CURVE DATA

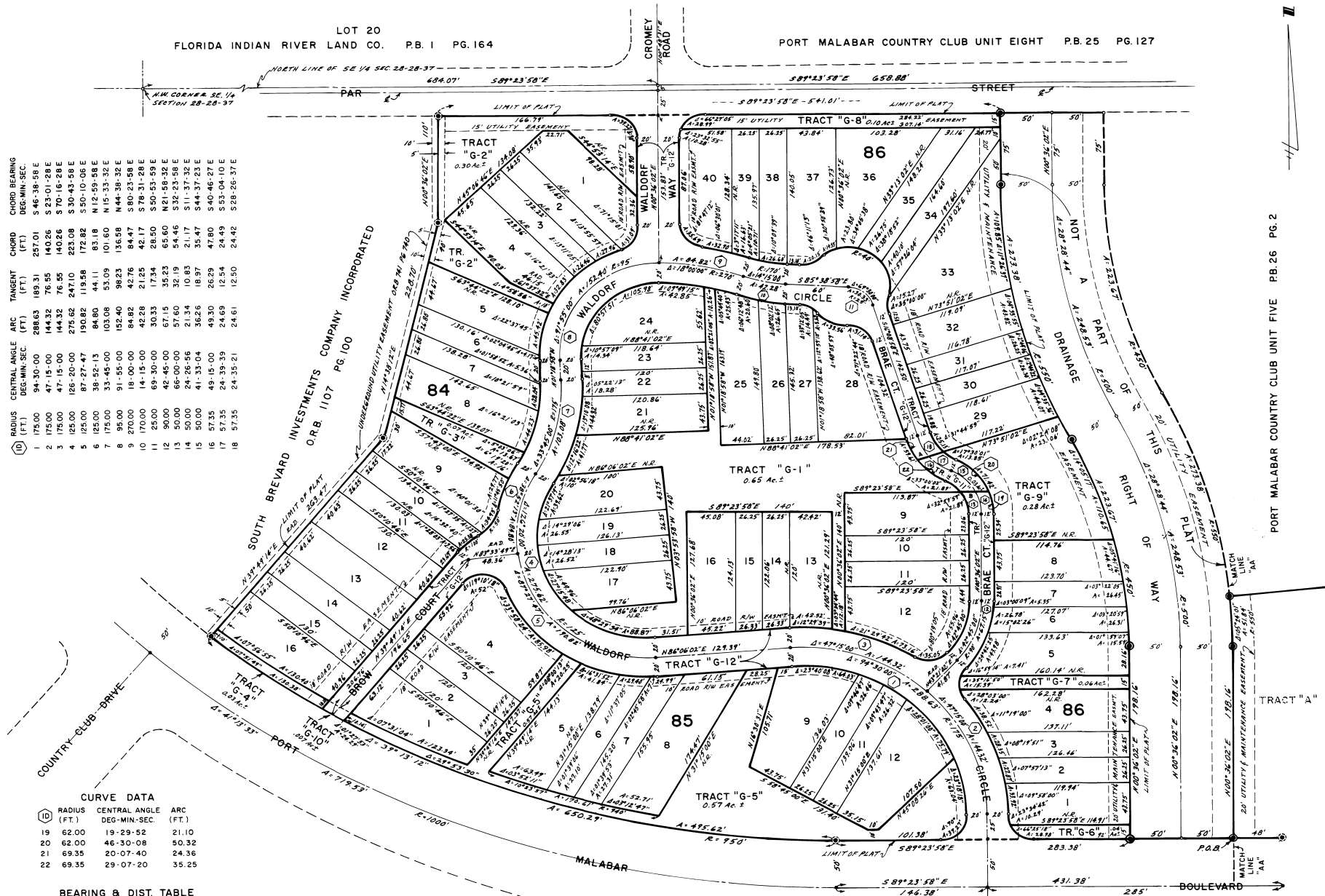
STATION	RADIUS (FT.)	CENTRAL ANGLE (DEG-MIN-SEC)	ARC (FT.)	TANGENT (FT.)	CHORD (FT.)	CHORD BEARING (DEG-MIN-SEC)
1	175.00	94-30-00	288.63	189.31	257.01	S 46° 38' 58" E
2	175.00	47-15-00	144.32	76.58	140.26	S 23° 01' 28" E
3	175.00	47-15-00	144.32	76.58	140.26	S 70° 16' 58" E
4	125.00	126-20-00	275.62	247.10	223.98	S 30° 43' 58" E
5	125.00	87-27-47	190.82	173.58	172.82	S 30° 10' 06" E
6	125.00	38-52-13	84.80	44.11	83.18	N 12° 59' 58" E
7	175.00	33-45-00	103.08	53.09	101.69	N 15° 33' 32" E
8	95.00	91-55-00	152.40	98.23	136.58	N 44° 36' 32" E
9	270.00	14-15-00	42.28	42.76	84.47	S 80° 23' 58" E
10	170.00	14-15-00	30.33	17.34	28.50	S 30° 55' 58" E
11	25.00	69-30-00	57.15	35.23	65.60	N 21° 59' 58" E
12	50.00	88-00-00	37.60	32.03	31.17	S 13° 37' 32" E
13	50.00	41-33-04	56.25	18.97	55.47	S 44° 37' 23" E
14	57.35	49-15-00	48.30	26.29	47.80	S 40° 46' 27" E
15	57.35	24-39-35	24.69	12.54	24.49	S 85° 04' 10" E
16	57.35	24-39-21	24.61	12.50	24.42	S 89° 26' 37" E

CURVE DATA

STATION	RADIUS (FT.)	CENTRAL ANGLE (DEG-MIN-SEC)	ARC (FT.)
19	62.00	19-29-52	21.10
20	62.00	46-30-08	50.32
21	69.35	20-07-40	24.36
22	69.35	29-07-20	35.25

BEARING & DIST. TABLE

A	N 73° 51' 02"	26.55'
B	S 89° 23' 58"	26.58'



CALCULATED BY 2/28
DRAWN BY 4/18
CHECKED BY 1/22
APPROVED BY 1/22

PORT MALABAR COUNTRY CLUB UNIT ONE P.B. 19 PG. 50

SHEET 2 OF 2 SHEETS
68 LOTS THIS SHEET

PM CC-5 R-1