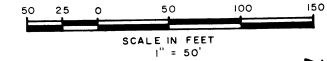


FIRST REPLAT IN PORT MALABAR HOLIDAY PARK UNIT ONE

CITY OF PALM BAY,
BREVARD COUNTY, FLORIDA

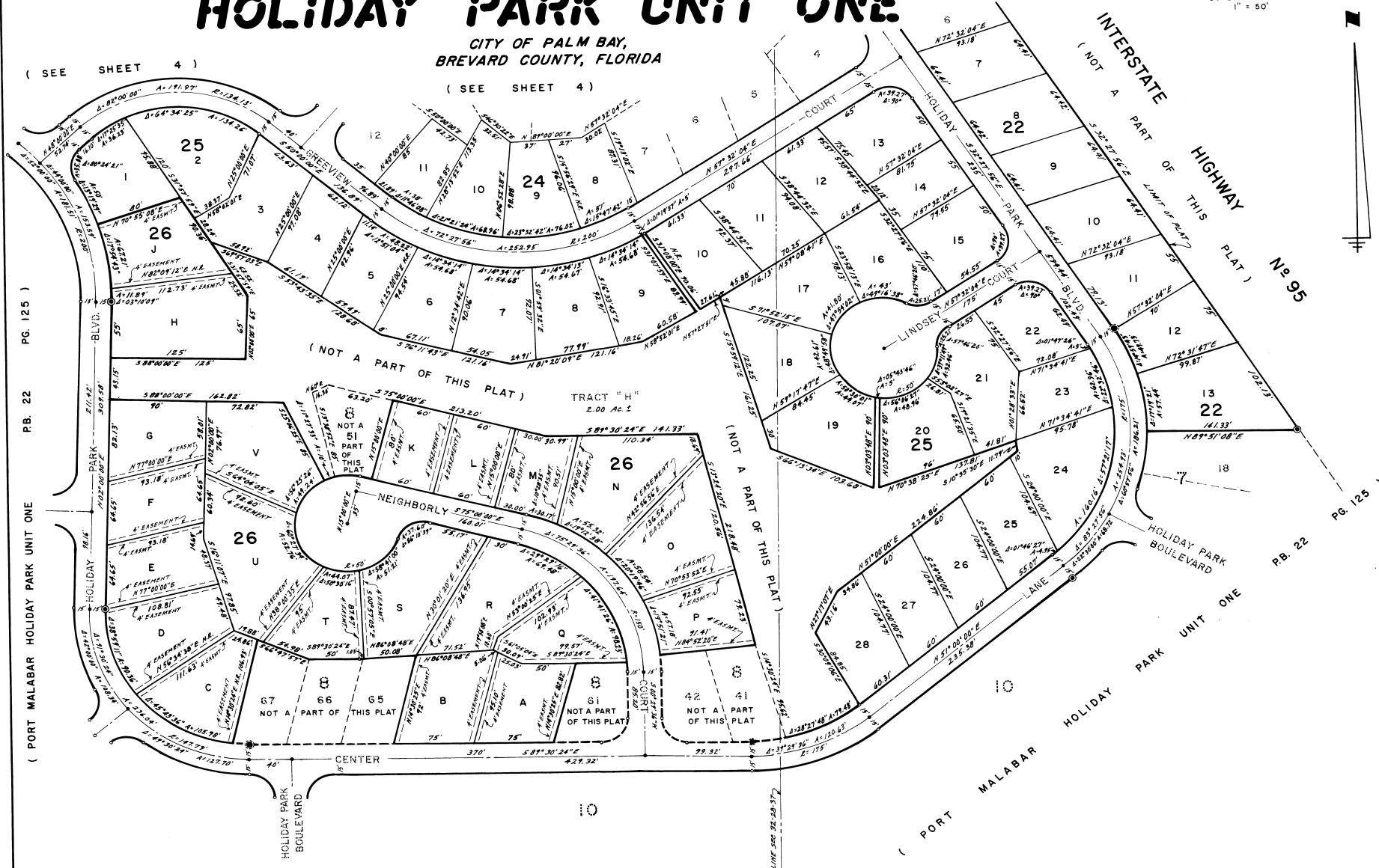
(SEE SHEET 4)

PLAT BOOK 26
AND PAGE 16



(SEE SHEET 4)

(SEE SHEET 4)



PG. 125)

PB. 22

(PORT MALABAR HOLIDAY PARK UNIT ONE

(PORT MALABAR HOLIDAY PARK UNIT ONE P.B. 22 PG. 125)

CALCULATED BY DLB
DRAWN BY DLB
CHECKED BY DLB
APPROVED BY _____

GENERAL DEVELOPMENT ENGINEERING COMPANY
Vero Beach Florida

SHEET 5 OF 5 SHEETS
58 LOTS THIS SHEET

PM-HP-1 R-1