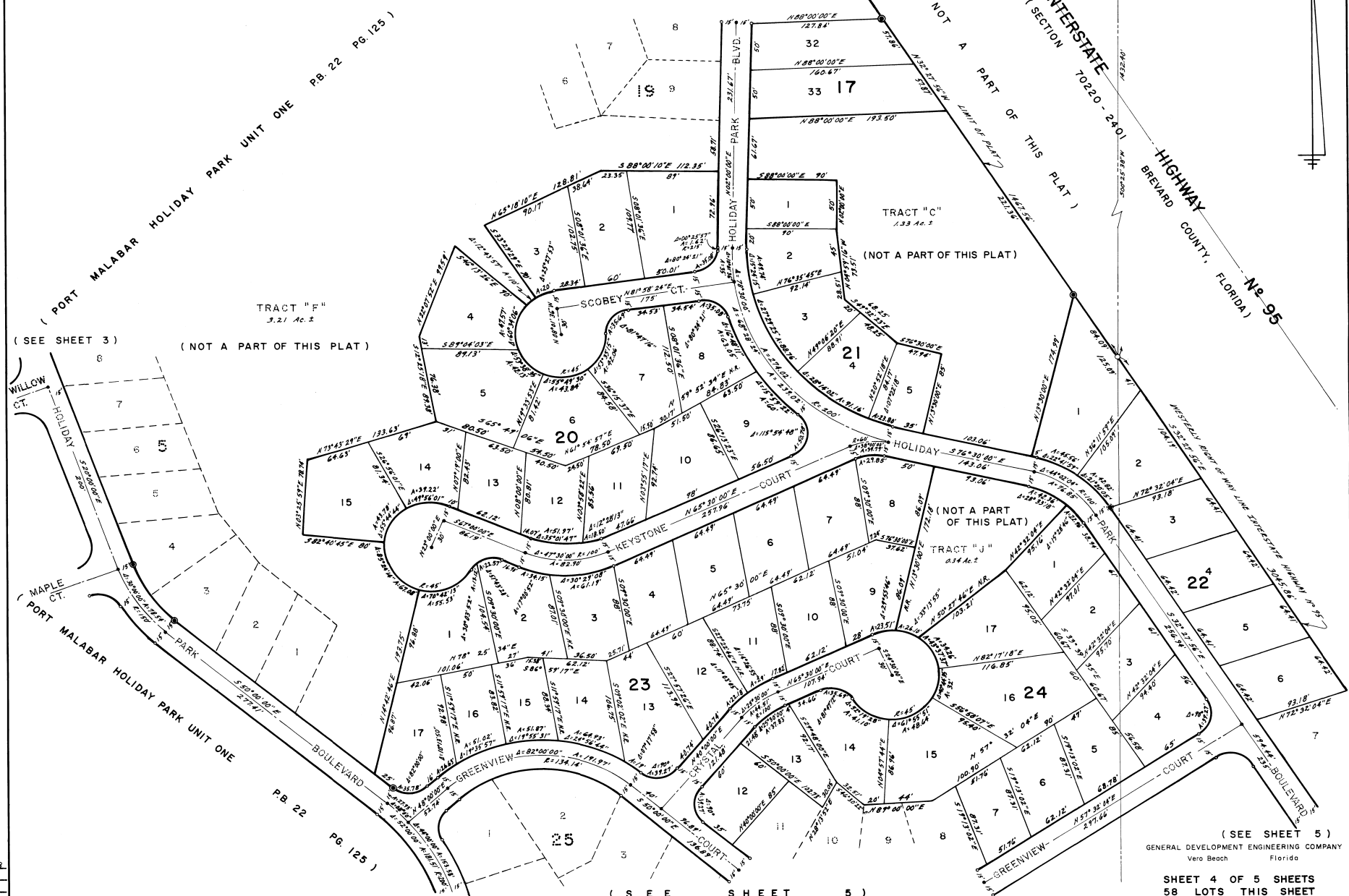
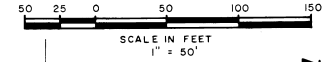


# FIRST REPLAT IN PORT MALABAR HOLIDAY PARK UNIT ONE

CITY OF PALM BAY,  
BREVARD COUNTY, FLORIDA

(SEE SHEET 3)

PLAT BOOK 26  
AND PAGE 15



(PORT MALABAR HOLIDAY PARK UNIT ONE P.B. 22 Pg. 125)

TRACT "E"  
3.21 Ac. ±  
(NOT A PART OF THIS PLAT)

(SEE SHEET 3)

(NOT A PART OF THIS PLAT)

TRACT "C"  
1.33 Ac. ±  
(NOT A PART OF THIS PLAT)

INTERSTATE (SECTION 29 28 32 33)  
10220 - 240  
BREVARD COUNTY, FLORIDA

Highway No. 95

(NOT A PART OF THIS PLAT)

TRACT "J"  
2.34 Ac. ±

TRACT "K"  
2.34 Ac. ±

(SEE SHEET 5)

GENERAL DEVELOPMENT ENGINEERING COMPANY  
Vero Beach Florida

SHEET 4 OF 5 SHEETS  
58 LOTS THIS SHEET

CALCULATED BY  
DRAWN BY  
CHECKED BY  
APPROVED BY

(SEE SHEET 5)

PM-HP-I R-I