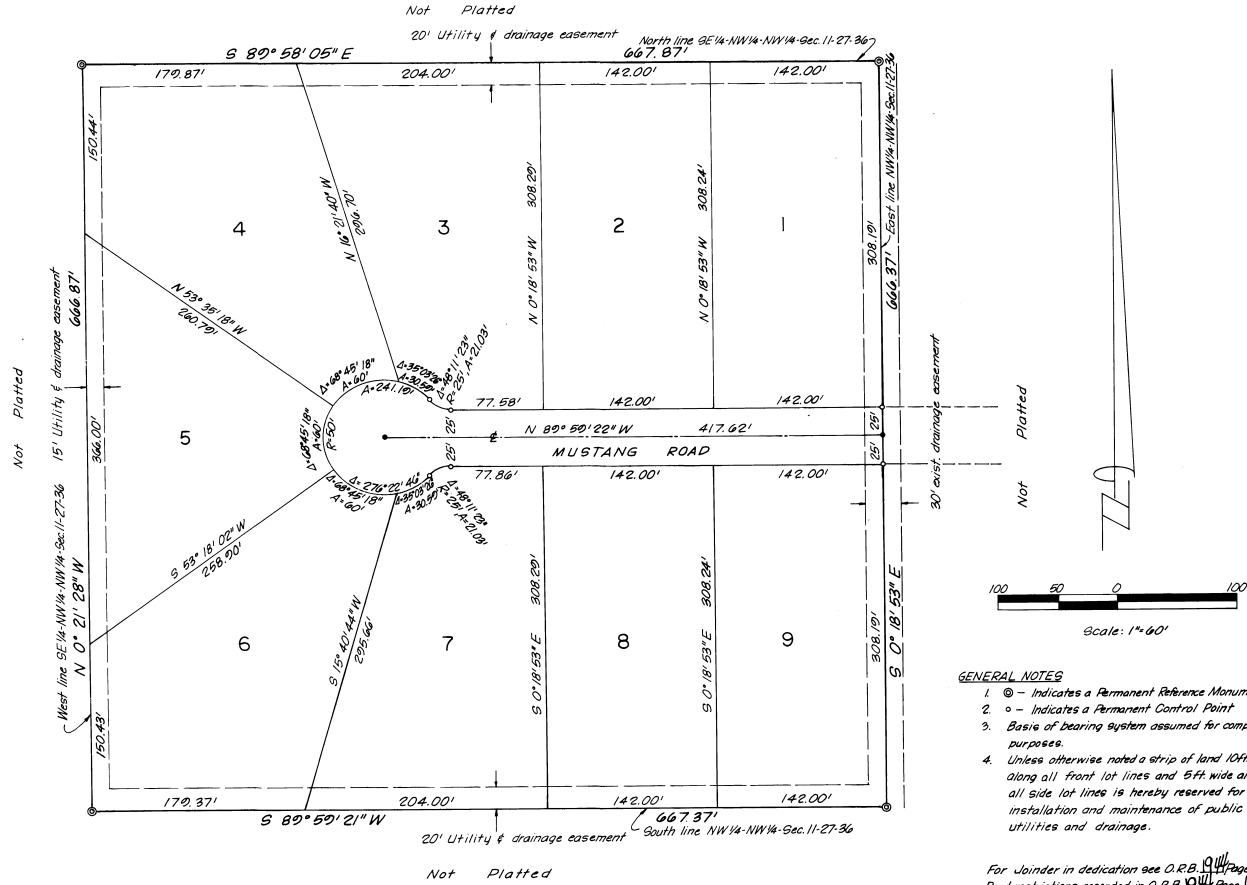


ASHLEY ESTATES

A SUBDIVISION IN THE NW/4 OF SECTION 11, TOWNSHIP 27 SOUTH, RANGE 36 EAST, BREVARD COUNTY, FLORIDA.

DESCRIPTION:
The SE 1/4 of the NW 1/4 of Section 11, Township 27 S., Range 36 E., Brevard County, Florida. Containing: 10.22 acres more or less.



- GENERAL NOTES**
1. \odot - Indicates a Permanent Reference Monument
 2. \circ - Indicates a Permanent Control Point
 3. Basis of bearing system assumed for computation purposes.
 4. Unless otherwise noted a strip of land 10ft wide along all front lot lines and 5ft wide along all side lot lines is hereby reserved for the installation and maintenance of public utilities and drainage.

For Joinder in dedication see O.R.B. 1044 Page 603
Deed restrictions recorded in O.R.B. 1044 Page 604

PLAT BOOK 25
AND PAGE 73

DEDICATION

KNOW ALL MEN BY THESE PRESENTS, That the undersigned, being the owner of the simple of the lands described as ASHLEY ESTATES, do hereby dedicate said lands and plot for the uses and purposes therein expressed and dedicate the streets, alleys, thoroughfares, parks, canals, and drainage easements shown hereon to the perpetual use of the public.

IN WITNESS WHEREOF, The undersigned have hereunto set their hands and seals on July 25, 1978

Paul R. Ruff
Jo Ann Ruff
Virgil A. Self
Elizabeth A. Self

RD. BOX EG1521
MELBOURNE, FLA
32935

Signed and sealed in the presence of:
James Ann Trafer
NOTARY PUBLIC

STATE OF Florida COUNTY OF BREVARD
THIS IS TO CERTIFY, That on July 25, 1978 before me, an officer duly authorized to take acknowledgments in the State and County aforesaid, personally appeared Paul R. Ruff, Jo Ann Ruff, Virgil A. Self, Elizabeth A. Self to me known to be the person described in and who executed the foregoing dedication and severally acknowledged the execution thereof to be their free act and deed for the uses and purposes therein expressed.

IN WITNESS WHEREOF, I have hereunto set my hand and seal on the above date.

James Ann Trafer
NOTARY PUBLIC
My Commission Expires June 20, 1981

CERTIFICATE OF SURVEY

KNOW ALL MEN BY THESE PRESENTS, That the undersigned, being a licensed and registered land surveyor, does hereby certify that on July 25, 1978, he completed the survey of the lands as shown in the foregoing plat that said plat is a true and correct representation of the lands therein described and that the permanent reference monuments have been placed as shown in the plat in accordance with Chapter 177, Florida Statutes; and that said lands are situated in Brevard County, Florida.

Dated July 25, 1978

BUCKNER REALTY & SURVEYING, INC.
C. S. Buckner, P.E. Registration No. 1063

CERTIFICATE OF ACCEPTANCE OF DEDICATION BY BOARD OF COUNTY COMMISSIONERS

THIS IS TO CERTIFY That the Board of County Commissioners hereby accepts all roads, streets, alleys, thoroughfares, parks, canals, drainage easements, utility easements, lakes, pathways, open spaces and other rights of way, easements and areas dedicated to public use on this plat.

Attest: Chairman of the Board
By: Clerk of the Board

CERTIFICATE OF APPROVAL BY BOARD OF COUNTY COMMISSIONERS

THIS IS TO CERTIFY, That on SEPT. 7, 1978 the foregoing plat was approved by the Board of County Commissioners of Brevard County, Florida.

Attest: Chairman of the Board
By: Clerk of the Board
Approved: County Engineer

CERTIFICATE OF APPROVAL BY PLANNING AND ZONING COMMISSION

THIS IS TO CERTIFY, That on the Zoning Commission of Brevard County, Florida approved the foregoing plat.

Zoning Director Planning Director

CERTIFICATE OF CLERK

I HEREBY CERTIFY, That I have examined the foregoing plat, and find that it complies in form with all the requirements of Chapter 177, Florida Statutes, and was filed for record in the Public Records Office of Brevard County, Florida on July 25, 1978.

at 11:52 AM File No. 200835
Clerk of the Circuit Court
in and for Brevard County, Fla.

CALCULATED BY V.J.M.
DRAWN BY V.J.M.
CHECKED BY W.E.P.

BUCKNER REALTY & SURVEYING, INC.
MELBOURNE, FLORIDA