

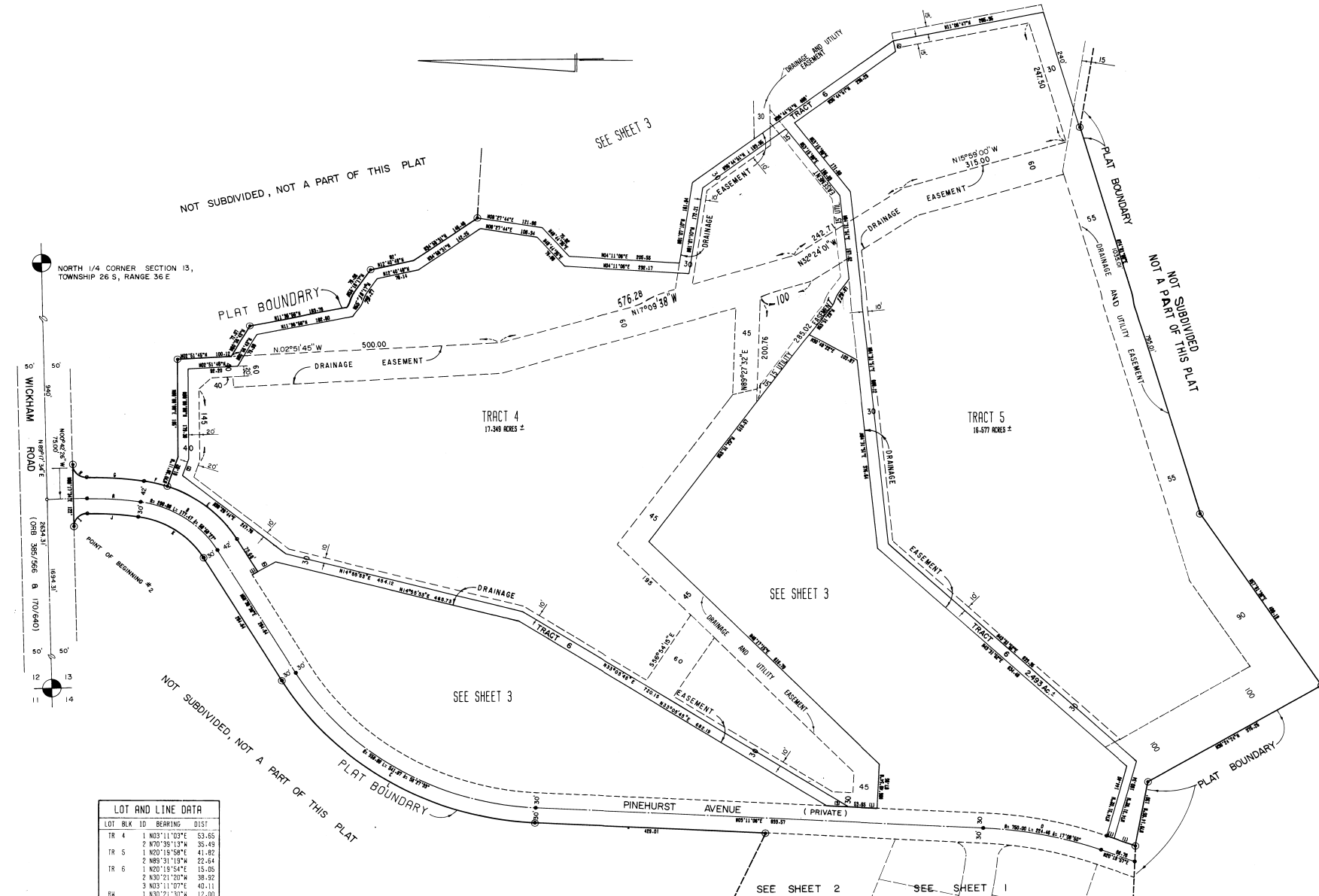
SUNTREE

PLANNED UNIT DEVELOPMENT, STAGE ONE
 A SUBDIVISION OF PORTIONS OF SECTIONS 13 AND 14,
 TOWNSHIP 26 SOUTH, RANGE 36 EAST,
 BREVARD COUNTY, FLORIDA



SHEET 4 OF 4

CURVE DATA						
ID	RADIUS	DELTA	ARC	CHD	CHD/RG	TRN
A	602.44	9°30'38"	100.00	99.89	N04°02'53"E	50.12
B	200.00	50°50'27"	177.47	171.70	N34°13'26"E	96.05
C	580.00	58°27'33"	541.37	520.31	N31°24'52"E	295.27
D	750.00	17°38'51"	224.48	223.62	N11°45'31"E	115.07
E	242.00	40°17'50"	170.20	166.72	N38°29'44"E	88.79
F	242.00	10°32'37"	44.53	44.47	N14°04'29"E	22.33
G	644.44	9°30'38"	106.37	106.68	N04°02'53"E	53.61
H	25.00	80°00'02"	39.27	35.38	N44°17'37"E	25.00
I	25.00	80°00'04"	39.27	35.38	N45°42'26"W	25.00
J	572.44	9°30'38"	95.02	94.91	N04°02'53"E	47.52
K	170.00	50°50'27"	150.86	145.58	N34°13'26"E	80.80
L	580.00	58°27'33"	571.53	548.69	N31°24'52"E	311.38



LOT AND LINE DATA			
LOT	BLK.	BEARING	DIST.
TR 4	1	N03°11'03"E	53.65
	2	N70°39'13"W	35.49
TR 5	1	N20°19'58"E	41.82
	2	N85°31'19"W	22.64
TR 6	1	N20°19'54"E	15.05
	2	N30°21'20"W	38.92
RH	3	N03°11'07"E	40.11
	1	N30°21'30"W	12.00