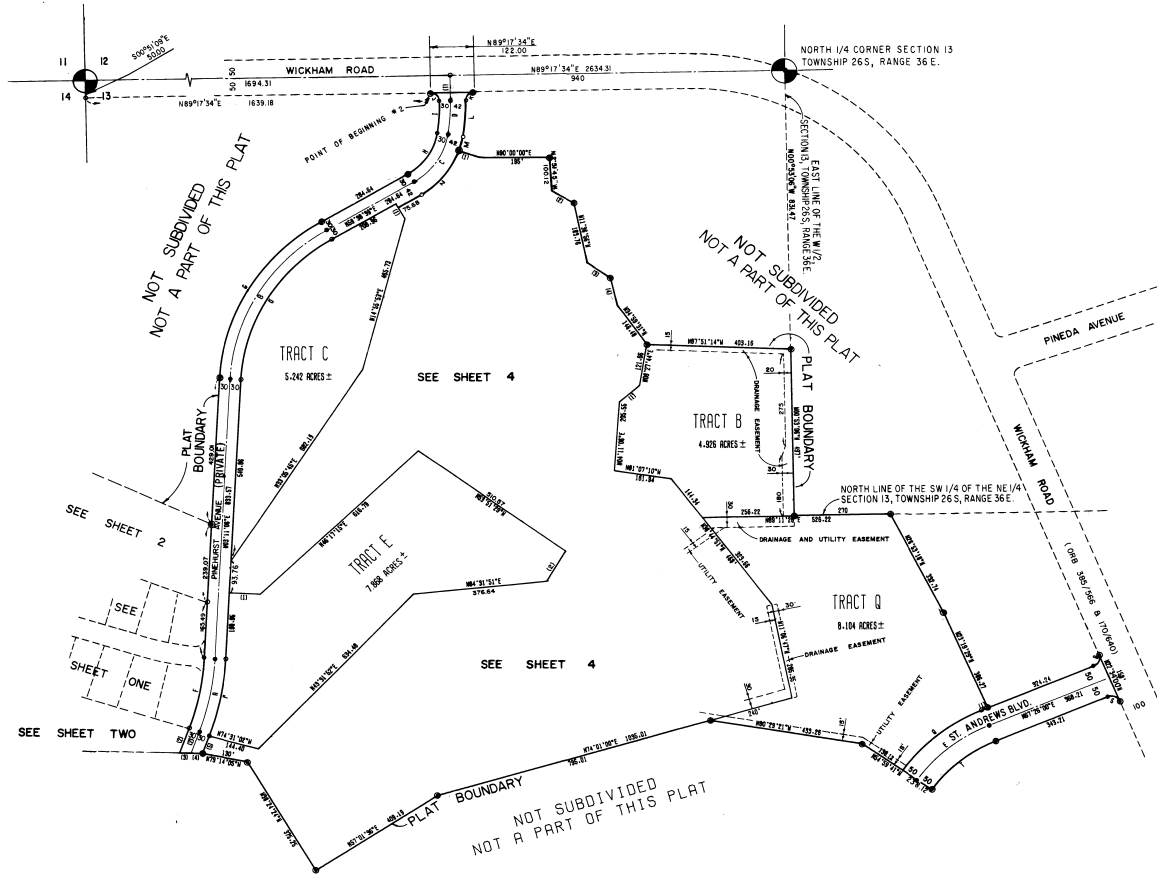


SUNTREE

PLANNED UNIT DEVELOPMENT, STAGE ONE
 A SUBDIVISION OF PORTIONS OF SECTIONS 13 AND 14,
 TOWNSHIP 26 SOUTH, RANGE 36 EAST,
 BREVARD COUNTY, FLORIDA



SHEET 3 OF 4



CURVE DATA						
ID	RADIUS	DELTA	ARC	CHD	CHD/BRC	TAN
A	750.00	17°08'51"	224.46	223.62	N11°45'31"E	113.07
B	850.00	56°27'33"	541.37	520.31	N34°24'52"E	295.27
C	200.00	50°50'27"	177.47	171.70	N34°13'28"E	95.05
D	602.44	9°30'38"	100.00	99.89	N04°00'53"E	50.12
E	450.00	32°23'42"	270.35	256.89	N51°13'10"E	133.77
F	720.00	17°08'51"	215.48	214.68	N11°45'31"E	108.55
G	580.00	56°27'33"	571.53	548.69	N34°24'52"E	311.38
H	170.00	50°50'27"	150.85	145.35	N34°13'28"E	80.80
I	572.44	9°30'38"	95.02	94.91	N04°00'53"E	47.62
J	25.00	88°58'52"	39.27	35.35	N45°42'26"W	25.00
K	25.00	90°00'00"	39.27	35.35	N44°17'37"E	25.00
L	644.44	1°48'41"	20.00	20.00	N00°11'00"E	10.00
M	242.00	10°32'37"	44.53	44.47	N14°04'29"E	22.33
N	242.00	40°17'50"	170.20	166.72	N33°29'44"E	88.79
O	520.00	56°27'33"	512.41	491.93	N34°24'52"E	275.17
P	780.00	17°08'51"	233.44	232.57	N11°45'31"E	117.60
Q	510.00	32°25'42"	286.65	284.81	N51°13'10"E	146.31
R	25.00	88°58'52"	39.27	35.35	N45°42'26"W	25.00
S	25.00	90°00'01"	39.27	35.35	N47°33'58"W	25.00
T	410.00	32°25'42"	232.05	228.97	N51°13'10"E	119.23

LOT AND LINE DATA		
LOT BLK ID	BEARING	DIST
CL	1 N00°42'25"W	75.00
	2 N20°18'57"E	66.76
TR B	1 N48°44'35"E	75.82
	2 N30°21'22"W	53.92
TR C	1 N86°48'54"W	87.85
TR D	1 N67°26'01"E	18.87
CC	1 N70°39'05"W	61.82
	2 N00°58'43"W	72.07
	3 N55°18'17"W	73.06
	4 N12°40'49"W	82.00
	5 N02°18'57"E	56.87
RH	1 N04°56'12"E	86.90
	2 N20°18'57"E	76.64
	3 N87°54'17"W	31.59
	4 N87°54'16"W	31.59