

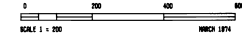
TABLES FOR SHEET 1

CURVE DATA					
RADIUS	DELTA	ARC	CHD	CHD/BRG	TAN
A	750.00	17°08'51"	224.46	223.62	N11°48'31"E 113.07
B	776.76	14°43'02"	159.92	159.57	N73°27'24"W 100.31
C	700.00	8°53'46"	108.69	108.58	N76°32'46"W 54.45
D	450.00	19°17'11"	151.48	150.76	N71°21'03"W 76.46
E	806.76	5°29'32"	77.41	77.38	N80°47'21"W 38.74
F	806.76	5°58'32"	83.67	83.63	N75°04'09"W 41.87
G	730.00	7°05'29"	80.35	80.29	N75°38'43"W 45.23
H	730.00	1°48'17"	22.89	22.89	N80°05'11"W 11.50
I	480.00	1°44'22"	14.57	14.57	N80°07'21"W 7.29
J	480.00	10°58'54"	92.00	91.86	N73°45'50"W 45.14
K	480.00	6°33'55"	65.00	64.97	N64°59'29"W 27.53
L	420.00	14°13'54"	104.53	104.26	N69°50'15"W 52.54
M	420.00	5°01'37"	36.85	36.84	N78°28'50"W 18.44
N	670.00	2°23'52"	28.04	28.04	N79°47'42"W 14.02
O	670.00	6°29'53"	75.89	75.86	N75°20'51"W 38.03
P	745.76	4°59'14"	65.00	64.98	N74°39'30"W 32.62
Q	745.76	6°07'04"	79.74	79.70	N80°08'39"W 39.91
R	25.00	89°36'39"	40.85	36.45	N49°59'25"E 26.63
S	25.00	91°08'58"	39.77	35.71	N37°53'47"W 25.51
T	720.00	12°43'15"	159.86	159.53	N13°58'18"E 80.26

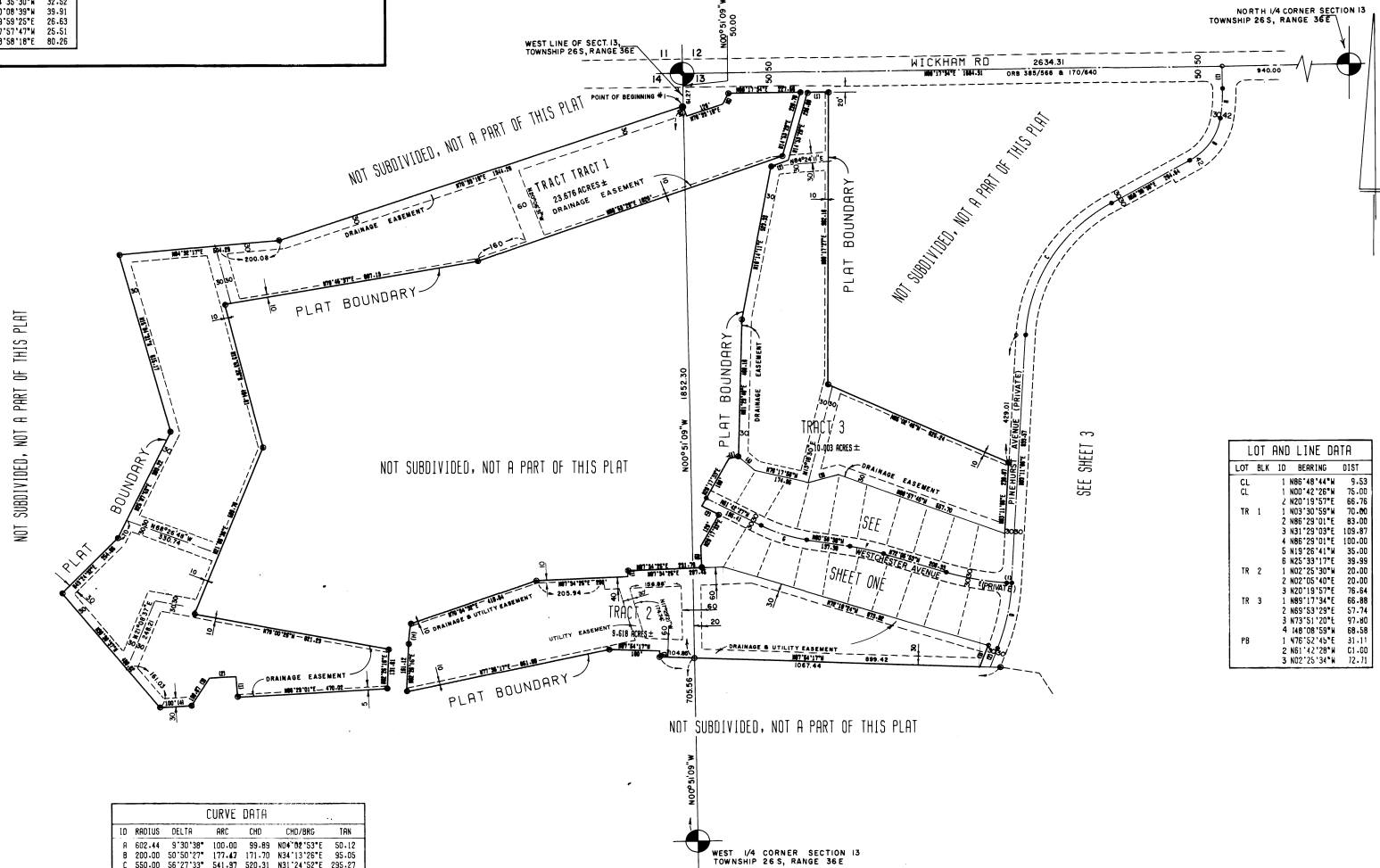
LOT AND LINE DATA			
LOT	BLK	ID	BEARING DIST
CL	1	N86°48'54"W	9.53
2	F	1 N72°05'53"W	26.33
8	F	1 N61°42'40"W	5.41
10	F	1 N76°52'45"E	31.11
2	G	1 N61°42'29"W	40.74
6	G	1 N72°05'53"W	20.00
9	G	1 N72°05'55"W	6.33

SUNTREE

PLANNED UNIT DEVELOPMENT, STAGE ONE
 A SUBDIVISION OF PORTIONS OF SECTIONS 13 AND 14,
 TOWNSHIP 26 SOUTH, RANGE 36 EAST,
 BREVARD COUNTY, FLORIDA



SHEET 2 OF 4



CURVE DATA						
ID	RADIUS	DELTA	ARC	CHD	CHD/BRG	TAN
A	602.44	9°30'38"	100.00	99.89	N04°09'53"E 50.12	
B	200.00	50°50'27"	177.47	171.70	N34°13'28"E 35.05	
C	650.00	38°27'33"	341.97	320.31	N31°24'52"E 295.27	
D	750.00	17°08'51"	224.46	223.62	N11°48'31"E 113.07	
E	776.76	14°43'02"	159.92	159.57	N73°27'24"W 100.31	
F	700.00	8°53'46"	108.69	108.58	N76°32'46"W 54.45	
G	450.00	19°17'11"	151.48	150.76	N71°21'03"W 76.46	
H	585.00	6°31'20"	66.59	66.56	N05°41'55"E 33.33	

LOT AND LINE DATA			
LOT	BLK	ID	BEARING DIST
CL	1	N86°48'44"W	9.53
CL	1	N00°42'26"W	75.00
TR 1	1	N02°19'53"E	66.76
TR 1	1	N03°50'55"W	70.80
TR 1	2	N86°29'01"E	83.00
TR 1	3	N31°29'03"E	108.87
TR 1	4	N85°29'01"E	100.00
TR 1	5	N19°26'41"W	35.00
TR 1	6	N25°39'17"E	39.89
TR 2	1	N02°25'30"W	20.00
TR 2	2	N02°05'40"E	20.00
TR 2	3	N20°19'53"E	76.64
TR 3	1	N85°17'34"E	66.89
TR 3	2	N85°53'29"E	57.74
TR 3	3	N73°51'20"E	97.80
TR 3	4	N48°08'59"W	88.58
PB	1	N76°52'45"E	31.11
PB	2	N61°42'28"W	40.74
PB	3	N02°25'34"W	72.71