

# Sherwood Villas

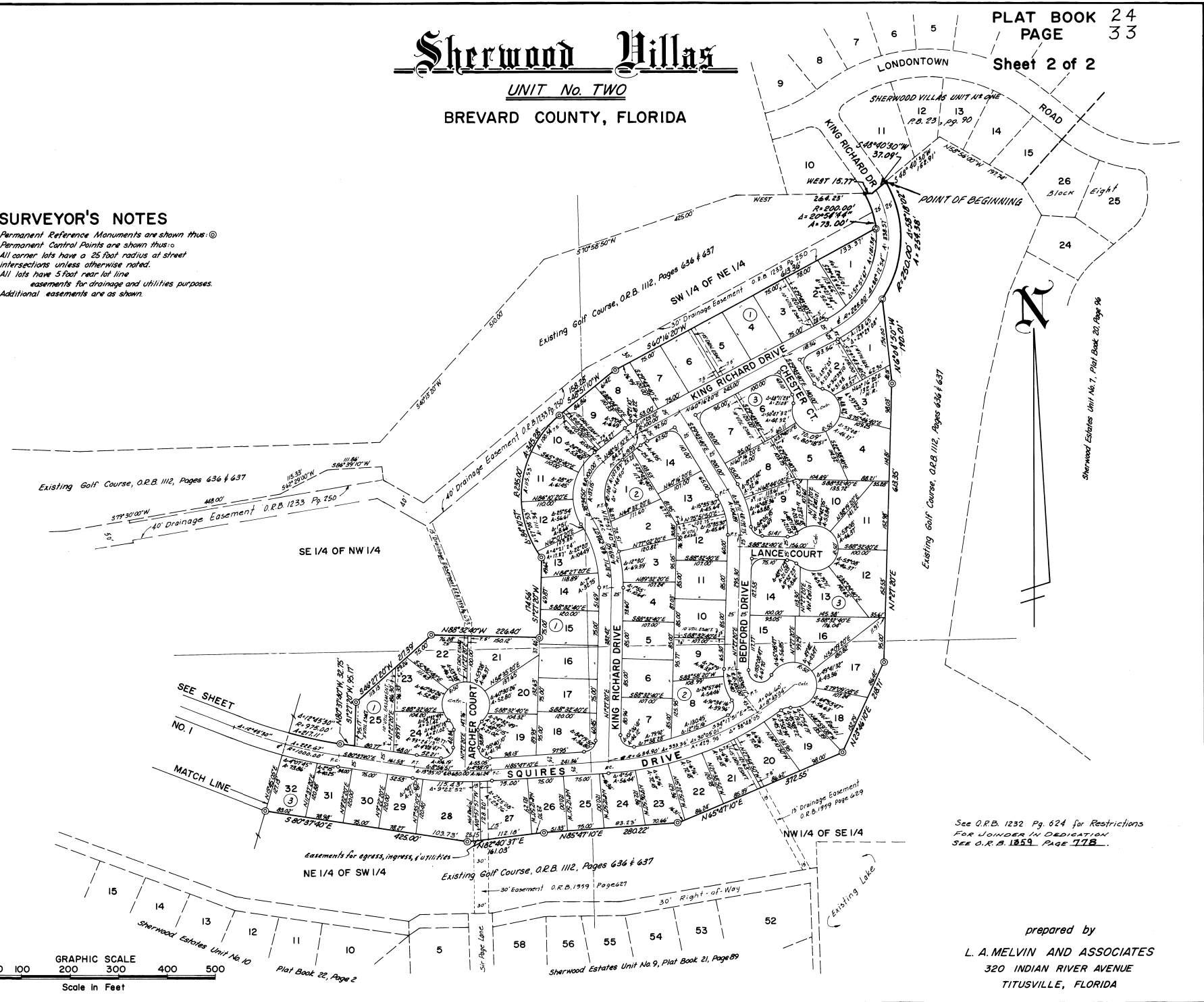
UNIT No. TWO

BREVARD COUNTY, FLORIDA

PLAT BOOK 24  
PAGE 33  
Sheet 2 of 2

## SURVEYOR'S NOTES

Permanent Reference Monuments are shown thus: ©  
Permanent Control Points are shown thus: ○  
All corner lots have a 25 foot radius at street intersections unless otherwise noted.  
All lots have 5 foot rear lot line easements for drainage and utilities purposes.  
Additional easements are as shown.



See O.R.B. 1232 Pg. 624 for Restrictions  
FOR JOINDER IN DEDICATION  
SEE O.R.B. 1259 PAGE 77B

prepared by  
L. A. MELVIN AND ASSOCIATES  
320 INDIAN RIVER AVENUE  
TITUSVILLE, FLORIDA