

# SECOND REPLAT IN PORT MALABAR UNIT THREE

A RE-SUBDIVISION OF A PORTION OF REPLAT OF PORTIONS OF PORT MALABAR UNIT THREE AS RECORDED IN PLAT BOOK 13, PAGE 110 LYING IN SECTION 24, TOWNSHIP 28 SOUTH, RANGE 37 EAST

CITY OF PALM BAY,  
BREVARD COUNTY, FLORIDA

SHEET 1 OF 1 SHEET

## DESCRIPTION

All of Blocks 78 and 82 and that part of Bonita Court lying immediately adjacent thereto, less and except lot 5 of said block 82, of the REPLAT OF PORTIONS OF PORT MALABAR UNIT THREE, according to the plat thereof recorded in Plat Book 13, Page 110, Public Records of Brevard County, Florida. All lying and being in Section 24, Township 28 South, Range 37 East, City of Palm Bay, Brevard County, Florida.

Containing 6.40 acres, more or less.

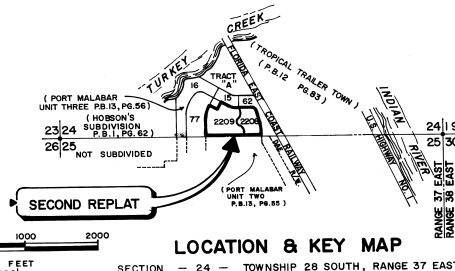
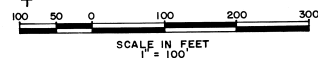
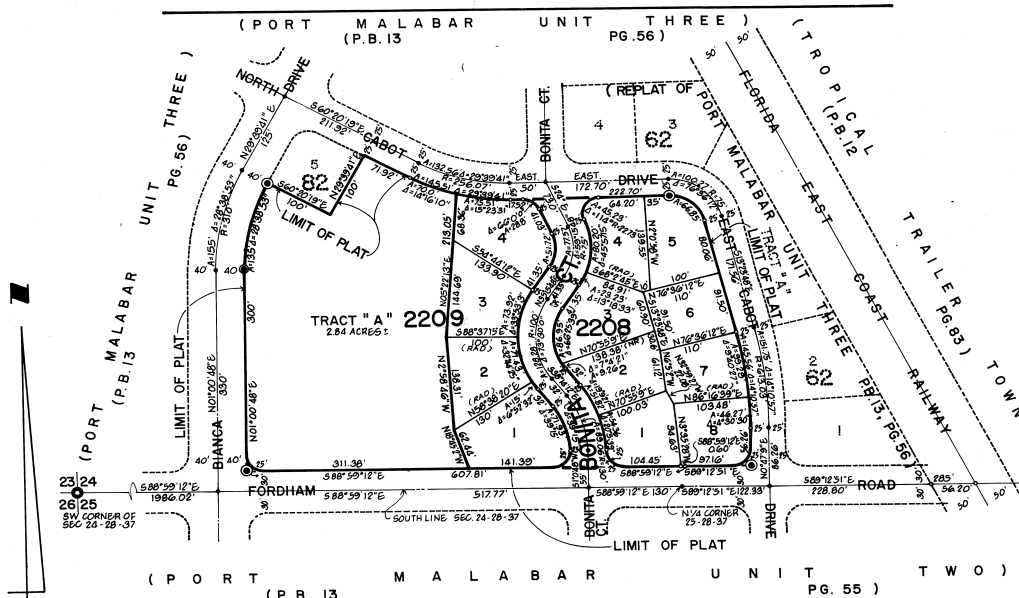
## GENERAL NOTES.

1.  $\odot$  indicates Permanent Reference Monument.
2.  $\bullet$  indicates Permanent Control Point.
3. Dimensions on corner lots are to the intersection of block lines extended unless otherwise indicated.
4. All radii are 25 feet unless otherwise indicated.
5. Basis of bearing system is assumed for computation purposes.
6. Deed Restrictions are filed in O.R.B. 322, Pages 445-451.

\* The Easements hereinafter described are reserved for the installation and maintenance of public utilities and drainage facilities:

1. A 10 foot strip along the rear of each lot and a 6 foot strip along the sides of each lot, except where side lot line is coincident with a street right of way line, except as shown by dashed lines.
2. As shown by dashed lines.
3. Where more than one lot or parts of one or more lots are intended as a building site, the outside boundaries of the building site shall carry said side easements, except where easements are shown by dashed lines.

An express purpose of this plat is to abandon, close, vacate and discontinue for public use all the streets as shown on said replat of portions of Port Malabar Unit Three, Plat Book 13, Page 110 of the Public Records of Brevard County, Florida, lying within the limits of this plat and to replat said portion into streets, lot and blocks as shown.



ERNEST C. TROTT  
LAND SURVEYOR  
MIAMI-FLORIDA

SHEET 1 OF 1 SHEET  
12 TOTAL NO. LOTS

PLAT BOOK 24  
AND PAGE 1

817093

### DEDICATION

KNOW ALL MEN BY THESE PRESENTS, That the Corporation named below, being the owner in fee simple of the lands described in SECOND REPLAT IN PORT MALABAR UNIT THREE hereby dedicates said lands and plat for the uses and purposes therein expressed and dedicates the Streets, alleys, thoroughfares, parks, canals and drainage easements shown hereon to the perpetual use of the public; and IN WITNESS WHEREOF, has caused these presents to be signed and attested to by the officers named below and its corporate seal to be affixed hereto on 08-18-1972

GENERAL DEVELOPMENT CORPORATION  
1111 S. BAYSHORE DRIVE MIAMI, FLORIDA

By *Frederick E. Roach*  
PRESIDENT

Attest *David A. Doheny*  
SECRETARY



STATE OF FLORIDA COUNTY OF DADE  
THIS IS TO CERTIFY, That on 08-18-1972 before me, an officer duly authorized to take acknowledgments in the State and County aforesaid, personally appeared FREDERICK E. ROACH and DAVID A. DOHENY respectively President and SECRETARY of the above named corporation incorporated under the laws of the State of FLORIDA, to me known to be the Individuals and officers described in and who executed the foregoing Dedication and severally acknowledged the execution thereof to be their free act and deed as such officers thereunto duly authorized; that the official seal of said corporation is duly affixed thereto; and that the said Dedication is the act and deed of said corporation.

IN WITNESS WHEREOF, I have hereto set my hand and seal on the above date.

*Ernest C. Trott*  
NOTARY PUBLIC  
My Commission Expires 2-7-76



### CERTIFICATE OF SURVEYOR

KNOW ALL MEN BY THESE PRESENTS, That the undersigned, being a licensed and registered land surveyor, does hereby certify that on 08-18-1972 I have surveyed and completed the plat of the lands as shown in the foregoing plat; that said representation of the lands therein described and that the permanent reference monuments have been placed as required by Chapter 177, Florida Statutes; and that said plat is a true and correct representation of the lands as surveyed and shown on the plat.

ERNEST C. TROTT  
REGISTERED LAND SURVEYOR

### CERTIFICATE OF APPROVAL BY MUNICIPALITY

THIS IS TO CERTIFY, That on Nov. 2, 1972 the City of Palm Bay, approved the replat of the above described lands.

*Ernest C. Trott*  
MAYOR

Attest: *Salvador Sanchez*  
CITY CLERK



### CERTIFICATE OF APPROVAL BY BOARD OF COUNTY COMMISSIONERS

THIS IS TO CERTIFY, That on 08-18-1972 the foregoing plat was approved by the Board of County Commissioners of Brevard County, Florida.

**NOT APPLICABLE**

Attest: \_\_\_\_\_  
Chairman of the Board.  
Clerk of the Board.  
Approved: \_\_\_\_\_  
County Engineer.

### CERTIFICATE OF APPROVAL BY ZONING COMMISSION

THIS IS TO CERTIFY, That on 08-18-1972 the Zoning Commission of the above Municipality approved the foregoing plat.

*Wm. F. Gibbs*  
Zoning Director.

### CERTIFICATE OF CLERK

I HEREBY CERTIFY, That I have examined the foregoing plat and find that it complies in form with all the requirements of Chapter 177, Florida Statutes, and was filed for record on 08-18-1972 at 1:17 P.M. File No. 517093.

*Carlin B. Barnes*  
Clerk of the Circuit Court  
in and for Brevard County, Fla.



*Approved F.V. 10-18-72*  
*QED w/r*  
*W.R.*

CALCULATED BY G.L.  
DRAWN BY PY.  
CHECKED BY W.R.  
APPROVED BY W.R.