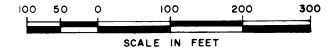


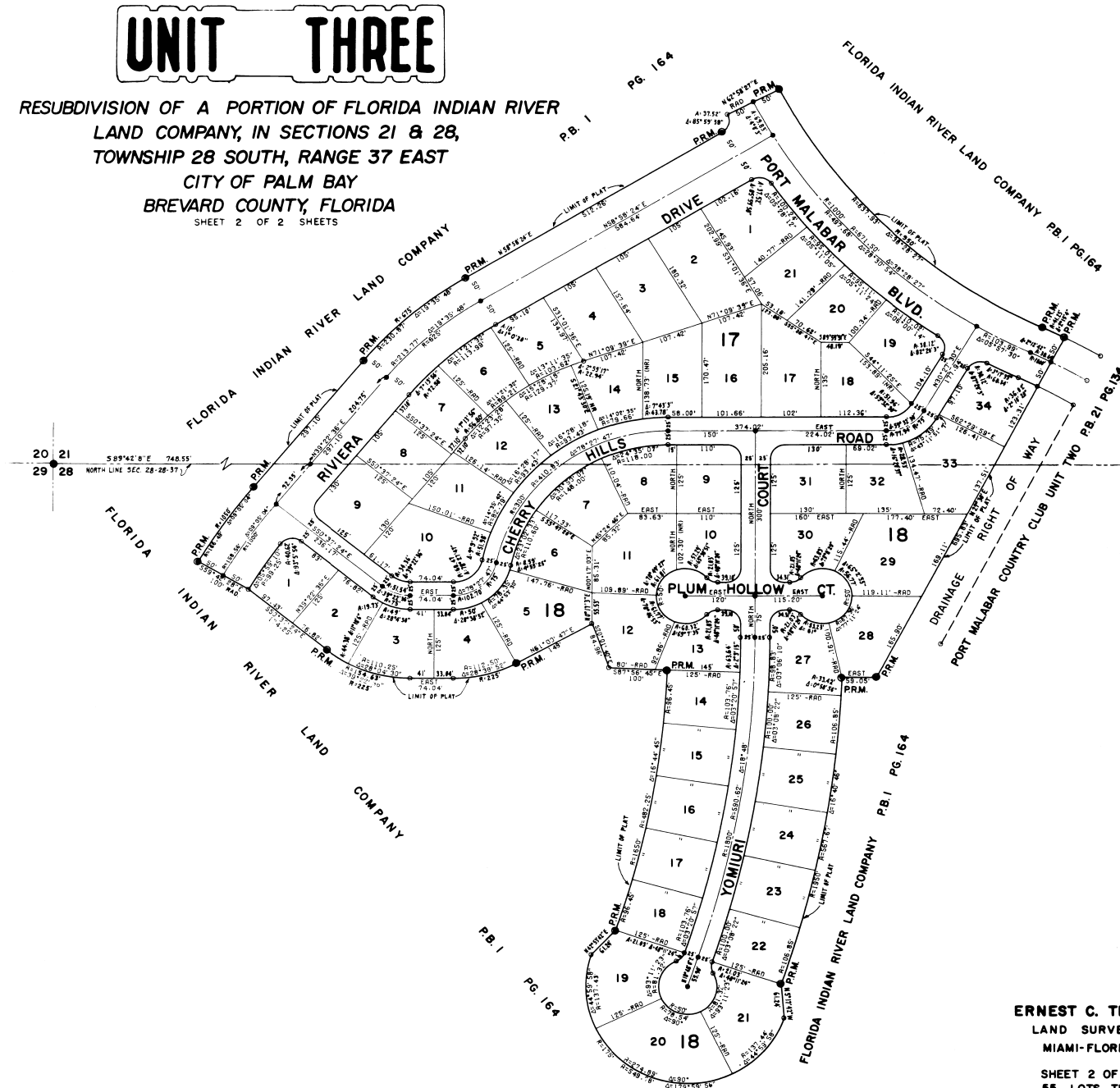
PORT MALABAR COUNTRY CLUB

PLAT BOOK 23
AND PAGE 89



UNIT THREE

A RESUBDIVISION OF A PORTION OF FLORIDA INDIAN RIVER
LAND COMPANY, IN SECTIONS 21 & 28,
TOWNSHIP 28 SOUTH, RANGE 37 EAST
CITY OF PALM BAY
BREVARD COUNTY, FLORIDA
SHEET 2 OF 2 SHEETS



CALCULATED BY *CT*
DRAWN BY *CT*
CHECKED BY *CT*
APPROVED BY *CT*

ERNEST C. TROTT
LAND SURVEYOR
MIAMI-FLORIDA

SHEET 2 OF 2 SHEETS
55 LOTS THIS SHEET

PM-CC3