

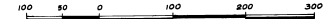
PORT ST. JOHN UNIT -- EIGHT

A SUBDIVISION LYING IN
 PORTIONS OF SECTIONS 13, 14, 23 AND 24, TOWNSHIP 23 SOUTH, RANGE 35 EAST,
 AND PORTIONS OF MAP OF DELESPINE, PLAT BOOK 2, PAGE 2,
 AND PORT ST. JOHN UNIT 2, PLAT BOOK 14, PAGES 48-51
 BREVARD COUNTY - FLORIDA

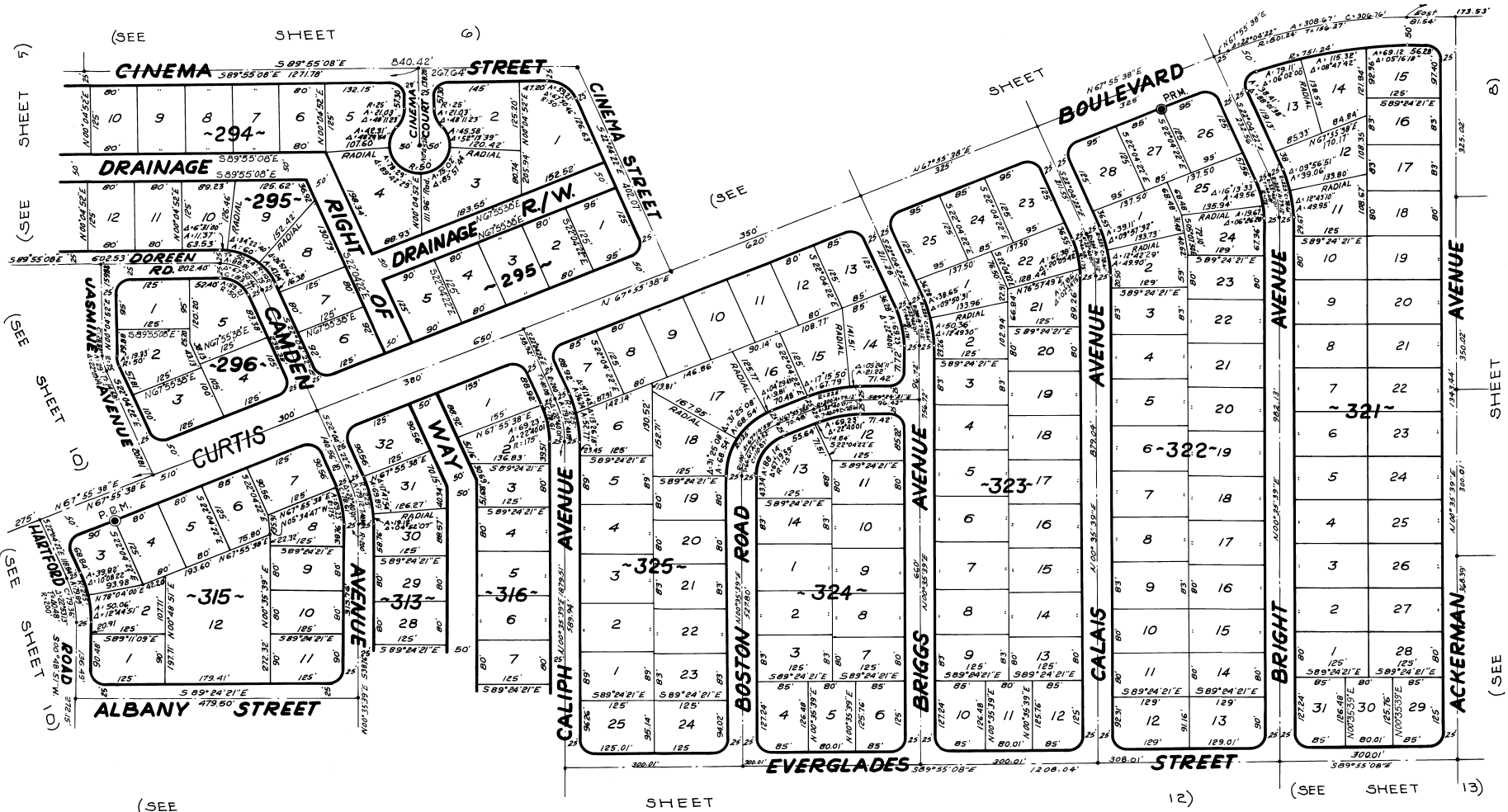
PLAT BOOK 23
 AND PAGE 78

FEBRUARY - 1970

Scale: 1" = 100'



JAMES EDWARD CLARK
 CIVIL ENGINEER
 MIAMI - FLORIDA



Calc. By: MAM.
 Drawn By: VM.F.
 Checked By: MAM.
 Approved By: CT