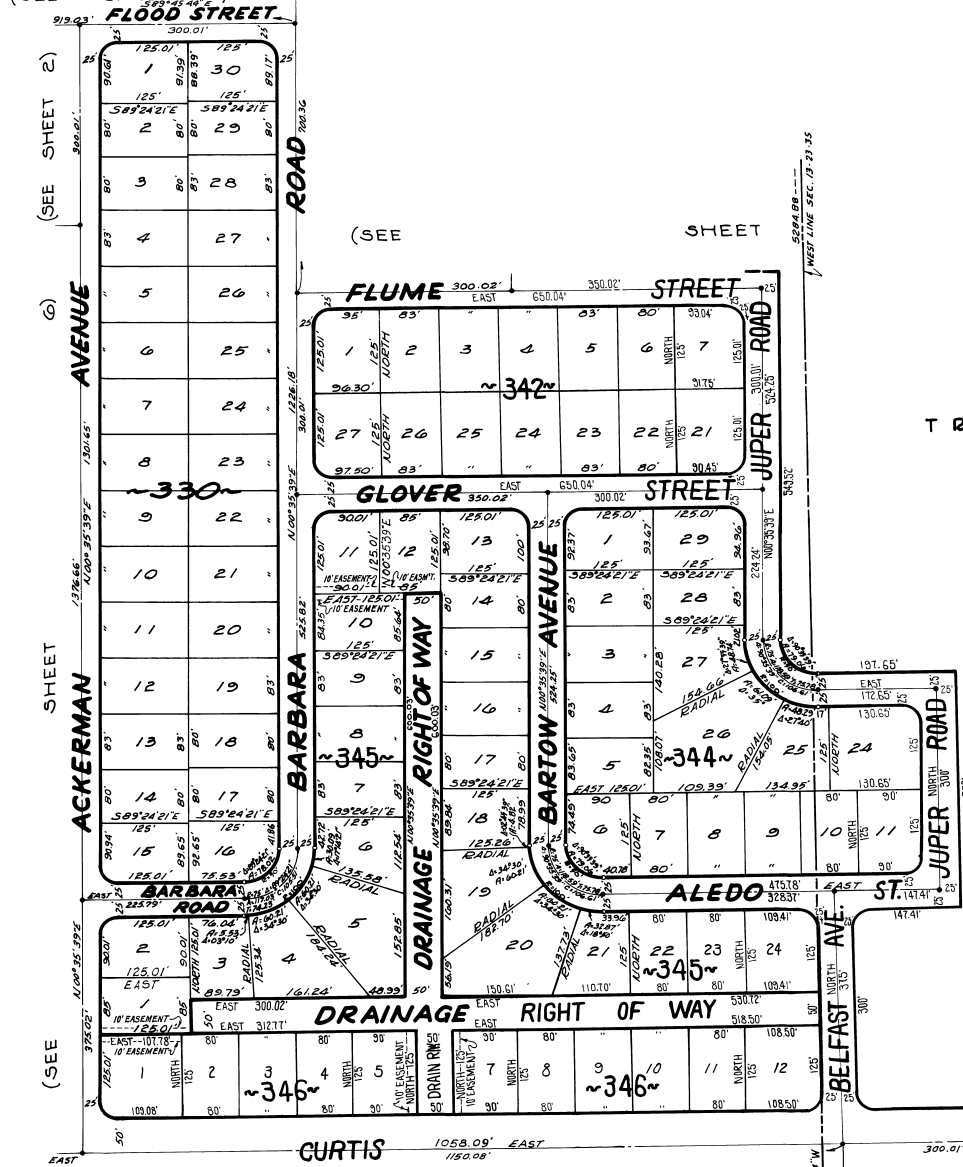


PORT ST. JOHN UNIT - EIGHT

PLAT BOOK 23
AND PAGE 76

A SUBDIVISION LYING IN
PORTIONS OF SECTIONS 13, 14, 23 AND 24, TOWNSHIP 23 SOUTH, RANGE 35 EAST,
AND PORTIONS OF MAP OF DELESPINE, PLAT BOOK 2, PAGE 2,
AND PORT ST. JOHN UNIT 2, PLAT BOOK 14, PAGES 48-51
BREVARD COUNTY - FLORIDA

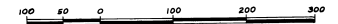
(SEE SHEET 2)



TRACT B



FEBRUARY - 1970
Scale: 1" = 100'



JAMES EDWARD CLARK
CIVIL ENGINEER
MIAMI - FLORIDA

MAP OF DELESPINE
P.B. 2, PAGE 2

FLORIDA POWER & LIGHT COMPANY
RIGHT OF WAY
O.R.B. 579, PAGE 1049

FLORIDA POWER & LIGHT CO.
AERIAL EASEMENT
O.R.B. 579, PAGE 1049

Calc. By: MAM
Drawn By: H.K.F.
Checked By: MAM
Approved By: CT