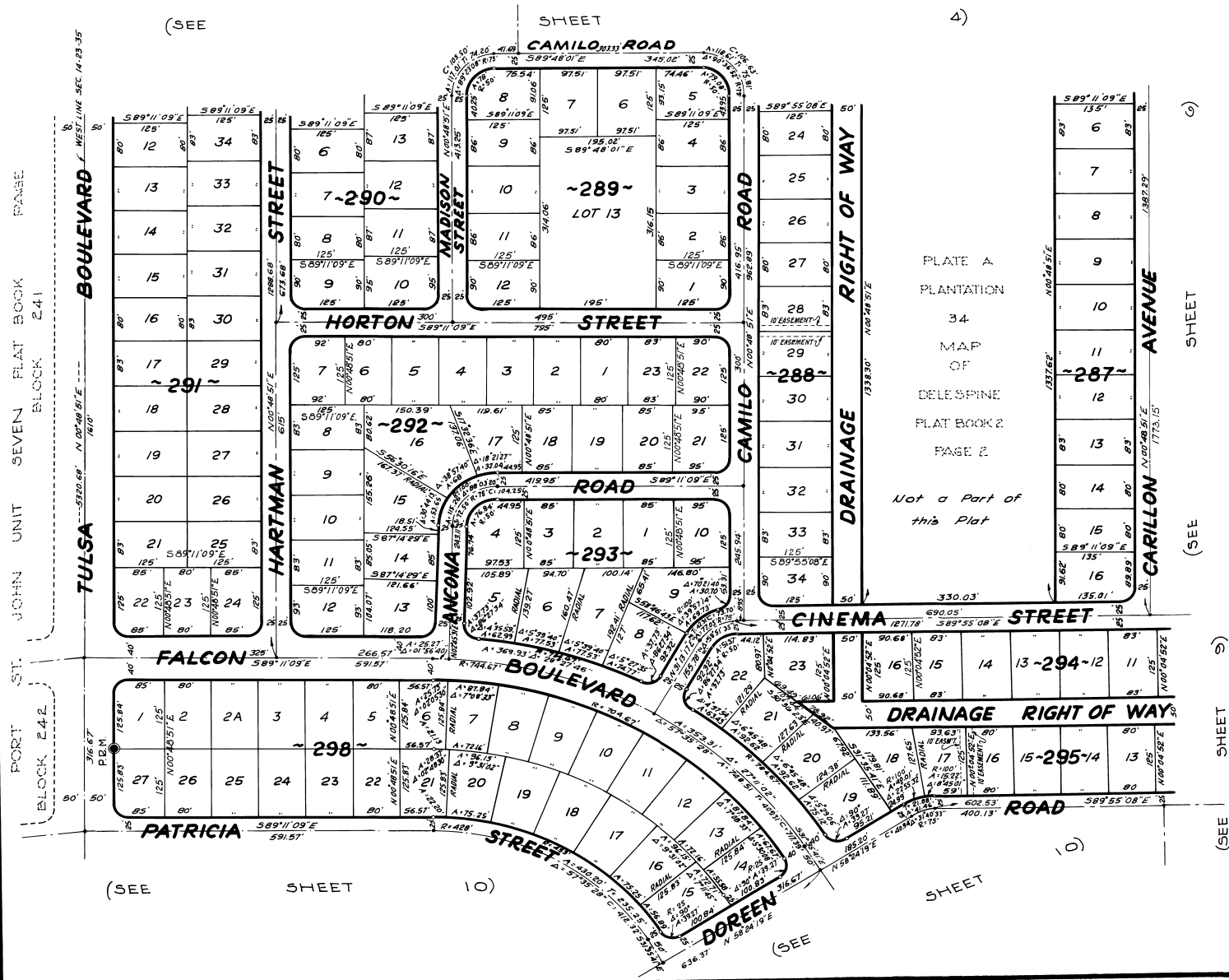


PORT ST. JOHN UNIT - EIGHT

PLAT BOOK 23
AND PAGE 74

A SUBDIVISION LYING IN
PORTIONS OF SECTIONS 13, 14, 23 AND 24, TOWNSHIP 23 SOUTH, RANGE 35 EAST,
AND PORTIONS OF MAP OF DELESPINE, PLAT BOOK 2, PAGE 2,
AND PORT ST. JOHN UNIT 2, PLAT BOOK 14, PAGES 48-51
BREVARD COUNTY - FLORIDA



Calc By: MAM
Drawn By: MME
Checked By: MAM
Approved By: CF

FEBRUARY - 1970
Scale: 1" = 100'
JAMES EDWARD CLARK
CIVIL ENGINEER
MIAMI - FLORIDA

SHEET 5 OF 14 SHEETS
144 LOTS THIS SHEET