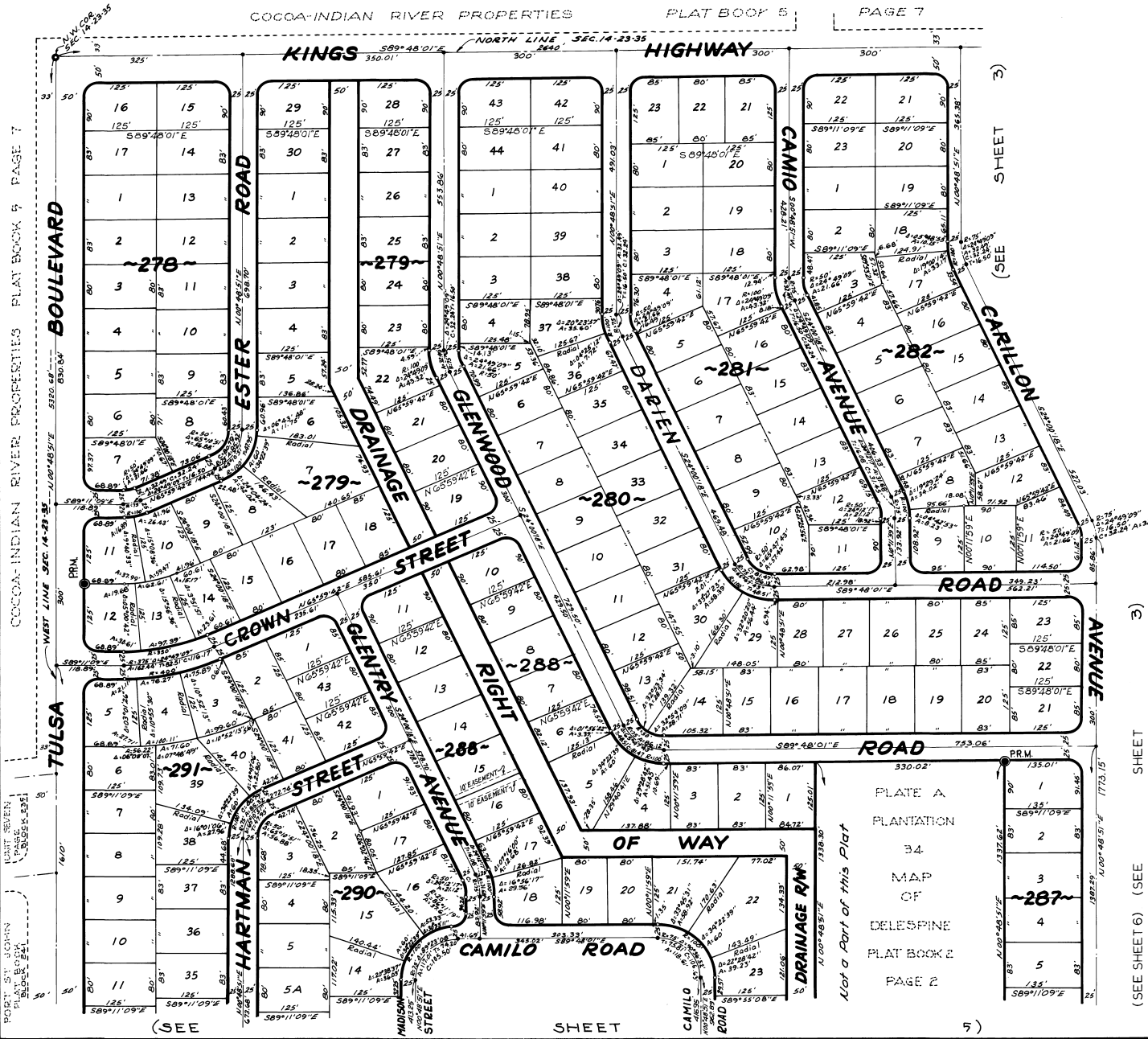


PORT ST. JOHN UNIT -- EIGHT

PLAT BOOK 23
AND PAGE 73

A SUBDIVISION LYING IN
PORTIONS OF SECTIONS 13,14,23 AND 24, TOWNSHIP 23 SOUTH, RANGE 35 EAST,
AND PORTIONS OF MAP OF DELESPINE, PLAT BOOK 2, PAGE 2,
AND PORT ST. JOHN UNIT 2, PLAT BOOK 14, PAGES 48-51
BREVARD COUNTY - FLORIDA

COCOA-INDIAN RIVER PROPERTIES PLAT BOOK 5 PAGE 7



CALC. BY: MAM
DRAWN BY: ACC
CHECKED BY: MAM
APPROVED BY: CT

PLATE A
PLANTATION
34
MAP
OF
DELESPINE
PLAT BOOK 2
PAGE 2

(SEE SHEET 6) (SEE SHEET 7)

FEBRUARY - 1970
Scale: 1" = 100'

JAMES EDWARD CLARK
CIVIL ENGINEER
MIAMI - FLORIDA

SHEET 4 OF 14 SHEETS
195 LOTS THIS SHEET