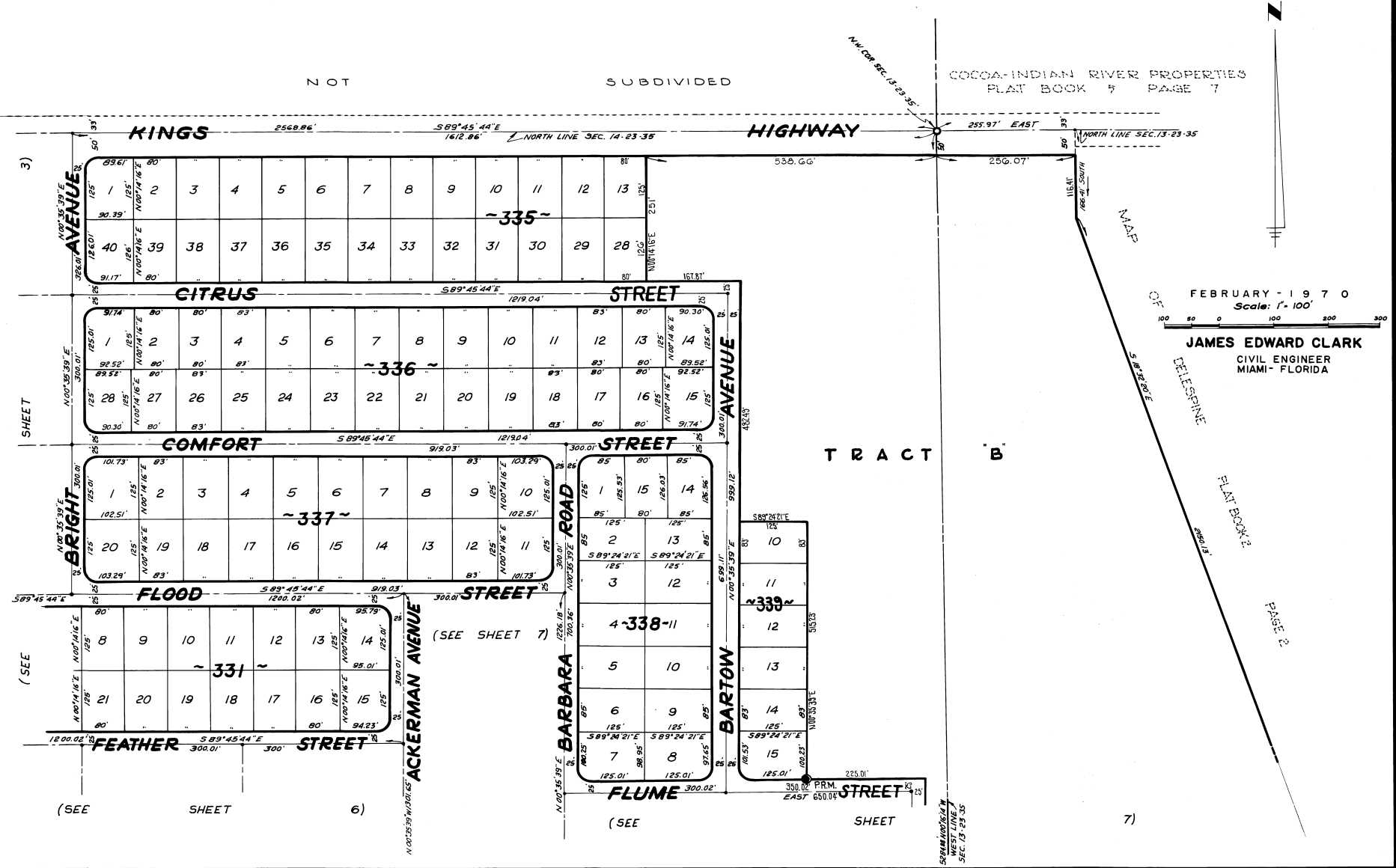


# PORT ST. JOHN UNIT - EIGHT

A SUBDIVISION LYING IN  
PORTIONS OF SECTIONS 13, 14, 23 AND 24, TOWNSHIP 23 SOUTH, RANGE 35 EAST,  
AND PORTIONS OF MAP OF DELESPINE, PLAT BOOK 2, PAGE 2,  
AND PORT ST. JOHN UNIT 2, PLAT BOOK 14, PAGES 48-51  
BREVARD COUNTY - FLORIDA

NOT SUBDIVIDED

COCCA-INDIAN RIVER PROPERTIES  
PLAT BOOK 9 PAGE 7



Calc. By: MAM.  
Drawn By: V.M.F.  
Checked By: MAM.  
Approved By: CT