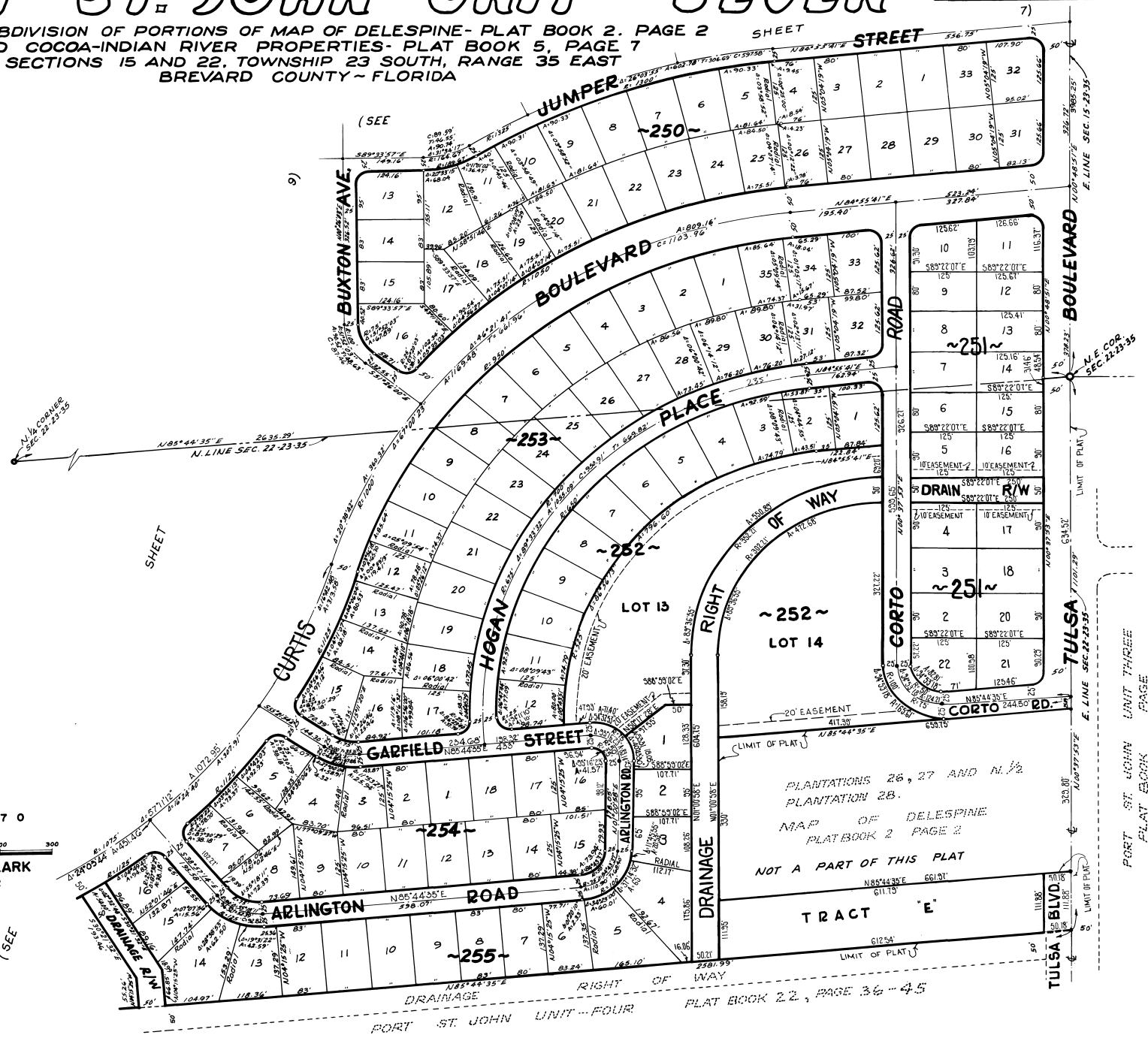


PORT ST. JOHN UNIT -- SEVEN

PLAT BOOK 23
AND PAGE 67

A RESUBDIVISION OF PORTIONS OF MAP OF DELESPINE- PLAT BOOK 2. PAGE 2
AND COCOA-INDIAN RIVER PROPERTIES- PLAT BOOK 5, PAGE 7
SECTIONS 15 AND 22, TOWNSHIP 23 SOUTH, RANGE 35 EAST
BREVARD COUNTY - FLORIDA



FEBRUARY - 1970
Scale: 1" = 100'

JAMES EDWARD CLARK
CIVIL ENGINEER
MIAMI - FLORIDA

CALC. BY: MAM
DRAWN BY: ECG
CHECKED BY: MAM
APPROVED BY: CT

PORT ST. JOHN UNIT -- FOUR PLAT BOOK 22, PAGE 36 - 45

SHEET 8 OF 10 SHEETS
136 LOTS THIS SHEET