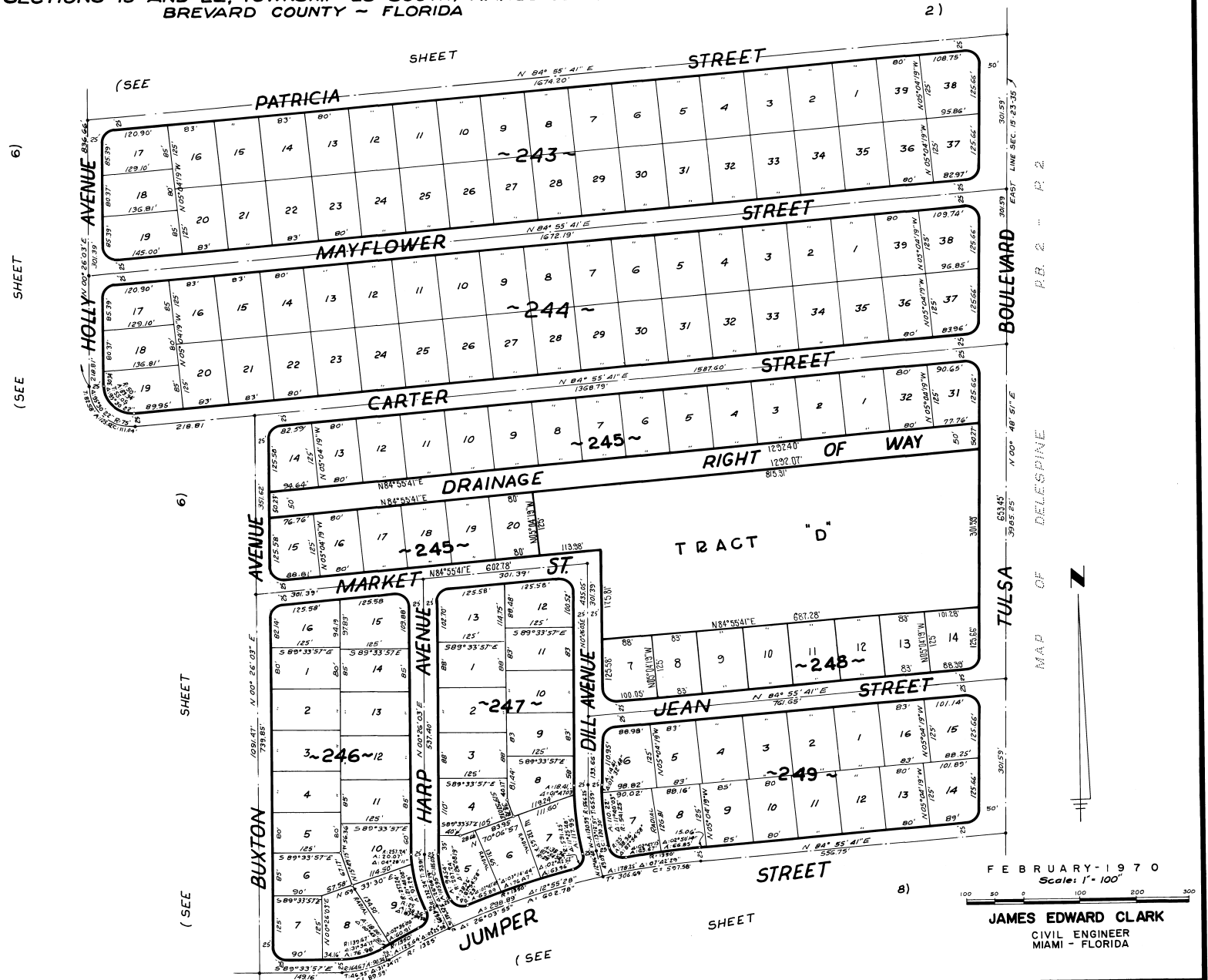


# PORT ST. JOHN UNIT -- SEVEN

PLAT BOOK 23  
AND PAGE 66

A RESUBDIVISION OF PORTIONS OF MAP OF DELESPINE - PLAT BOOK 2, PAGE 2  
AND COCOA-INDIAN RIVER PROPERTIES - PLAT BOOK 5, PAGE 7  
SECTIONS 15 AND 22, TOWNSHIP 23 SOUTH, RANGE 35 EAST  
BREVARD COUNTY - FLORIDA



Calc. By: MAM  
Drawn By: VMF  
Checked By: MAM  
Approved By: CT

FEBRUARY - 1970  
Scale: 1" = 100'  
JAMES EDWARD CLARK  
CIVIL ENGINEER  
MIAMI - FLORIDA

SHEET 7 OF 10 SHEETS  
153 LOTS THIS SHEET