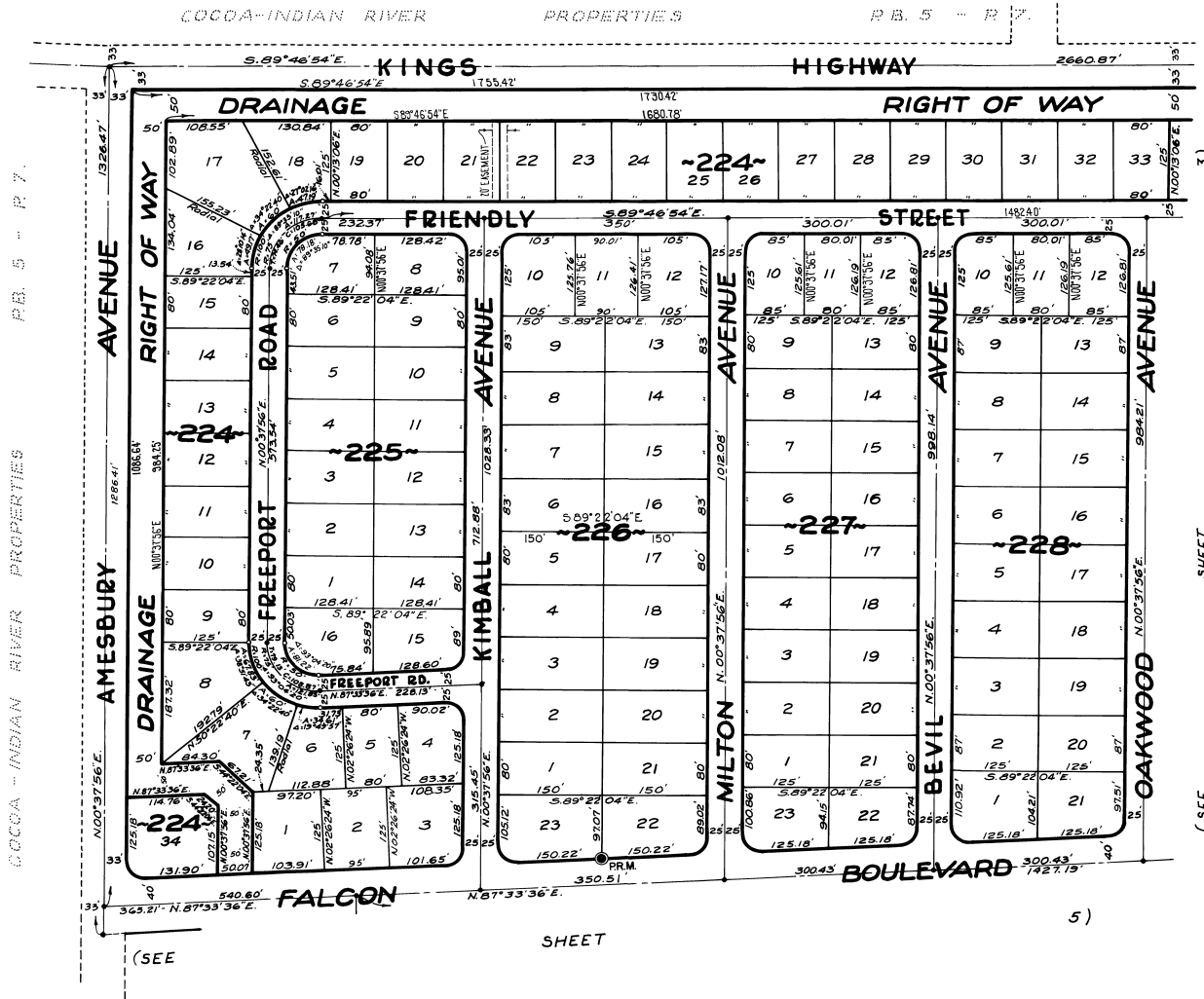


PORT ST. JOHN UNIT - SEVEN

PLAT BOOK 23
AND PAGE 63

A RESUBDIVISION OF PORTIONS OF MAP OF DELESPINE - PLAT BOOK 2, PAGE 2
AND COCOA-INDIAN RIVER PROPERTIES - PLAT BOOK 5, PAGE 7
SECTIONS 15 AND 22, TOWNSHIP 23 SOUTH, RANGE 35 EAST
BREVARD COUNTY - FLORIDA



FEBRUARY - 1970
Scale: 1" = 100'

JAMES EDWARD CLARK
CIVIL ENGINEER
MIAMI - FLORIDA

Cole By: MAM
Drawn By: E.L.
Checked By: MAM
Approved By: CT