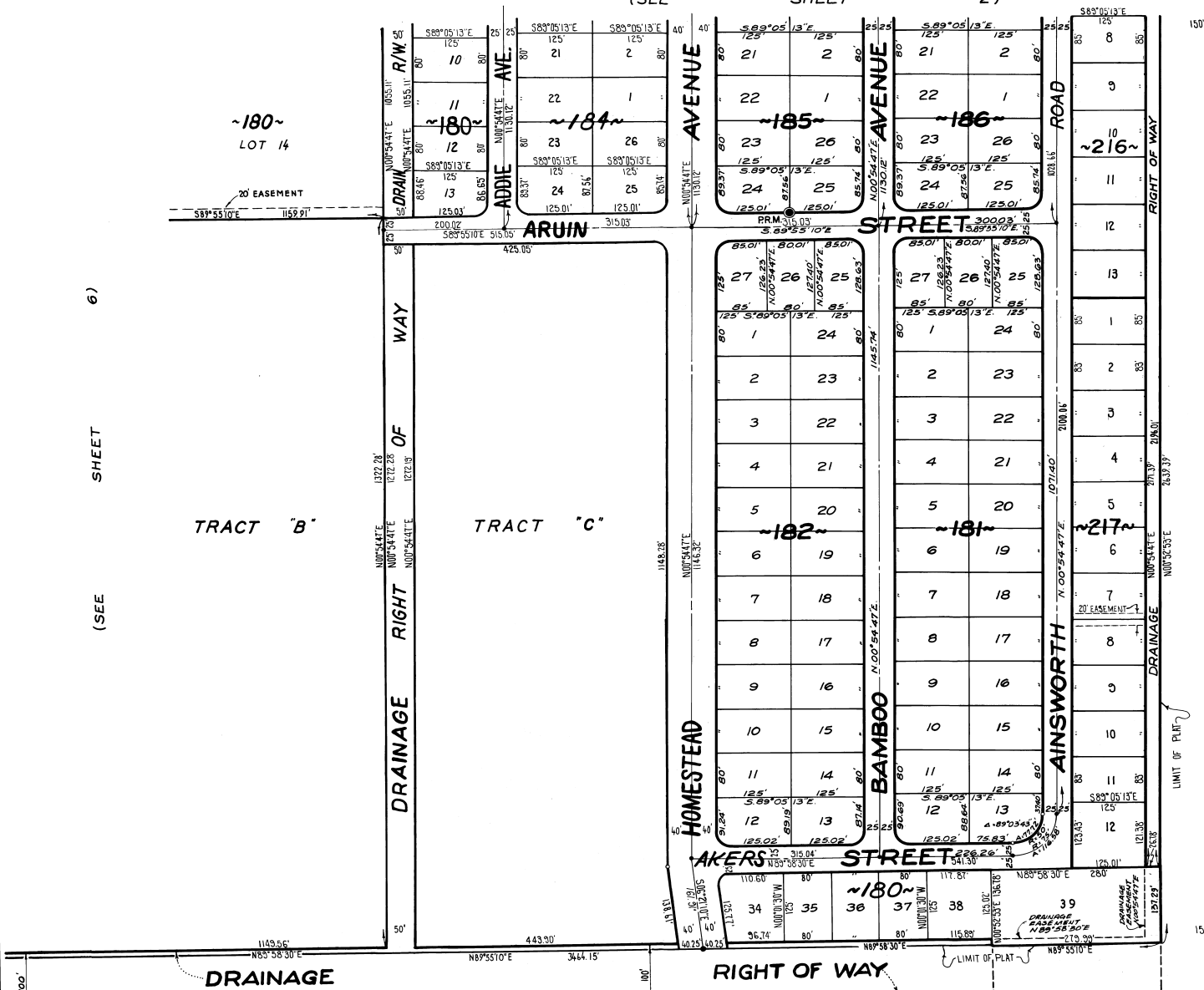


# PORT ST. JOHN UNIT --- SIX

PLAT BOOK 23  
AND PAGE 59

A SUBDIVISION OF PORTIONS OF SECTIONS 20 & 21, TWP. 23 S.-RGE. 35 E. AND  
A RESUBDIVISION OF PORTIONS OF MAP OF DELESPINE. PLAT BOOK 2 - PAGE 2  
ALL IN  
BREVARD COUNTY, FLORIDA

(SEE SHEET 2)



(SEE SHEET 6)

~180~  
LOT 14

TRACT "B"

TRACT "C"

INTERSTATE HIGHWAY NO. 95  
SECTION 70220-2404, SR 9 (1-95), BREVARD COUNTY LAW CASE NO. 6733

EAST LINE SEC. 24-25-36

N00°54'47"E

24.33.37'

20.00.00'

20.00.00'

20.00.00'

20.00.00'

FEBRUARY - 1970  
Scale: 1" = 100'

JAMES EDWARD CLARK  
CIVIL ENGINEER  
MIAMI-FLORIDA

CALC. BY M.A.M.  
DRAWN BY E.L.  
CHECKED BY M.A.M.  
APPROVED BY C.T.

( P O R T S T . J O H N U N I T F I V E )  
( P B 2 2 J O H N P G U N I T 4 6 - 5 0 )

SHEET 7 OF 7 SHEETS  
106 LOTS THIS SHEET