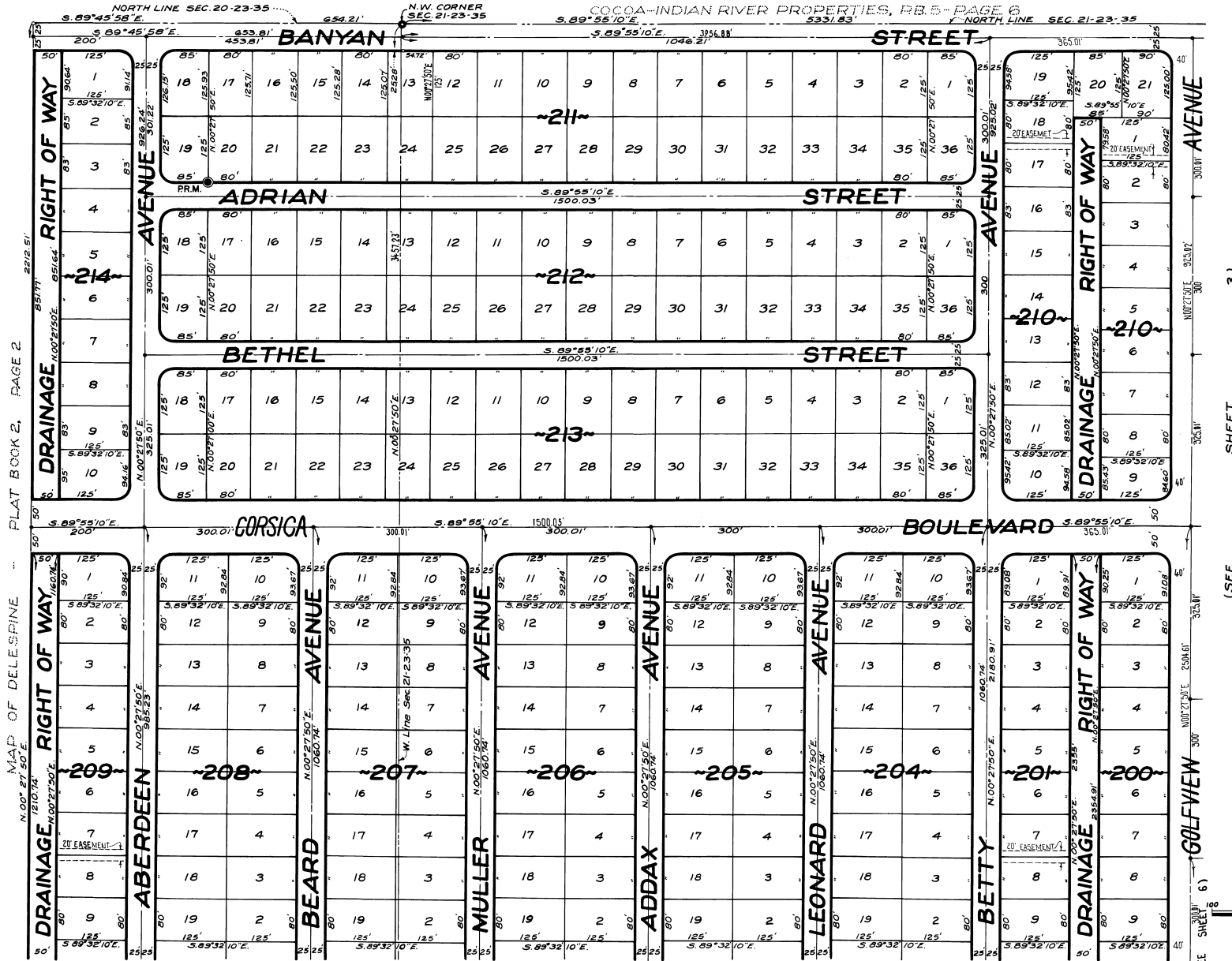


PORT ST. JOHN UNIT - - - SIX

PLAT BOOK 23
AND PAGE 56

A SUBDIVISION OF PORTIONS OF SECTIONS 20 & 21, TWP. 23 S. - RGE. 35 E. AND
A RESUBDIVISION OF PORTIONS OF MAP OF DELESPINE, PLAT BOOK 2 - PAGE 2
ALL IN
BREVARD COUNTY, FLORIDA



PLAT BOOK 2, PAGE 2

MAP OF DELESPINE

(SEE SHEET 5)

3)

SHEET

(SEE

(SEE SHEET 6)

FEBRUARY - 1970
Scale: 1" = 100'

JAMES EDWARD CLARK
CIVIL ENGINEER
MIAMI-FLORIDA

SHEET 4 OF 7 SHEETS
256 LOTS THIS SHEET

CALC. BY: M.A.M.
DRAWN BY: E.L.
CHECKED BY: M.A.M.
APPROVED BY: CT