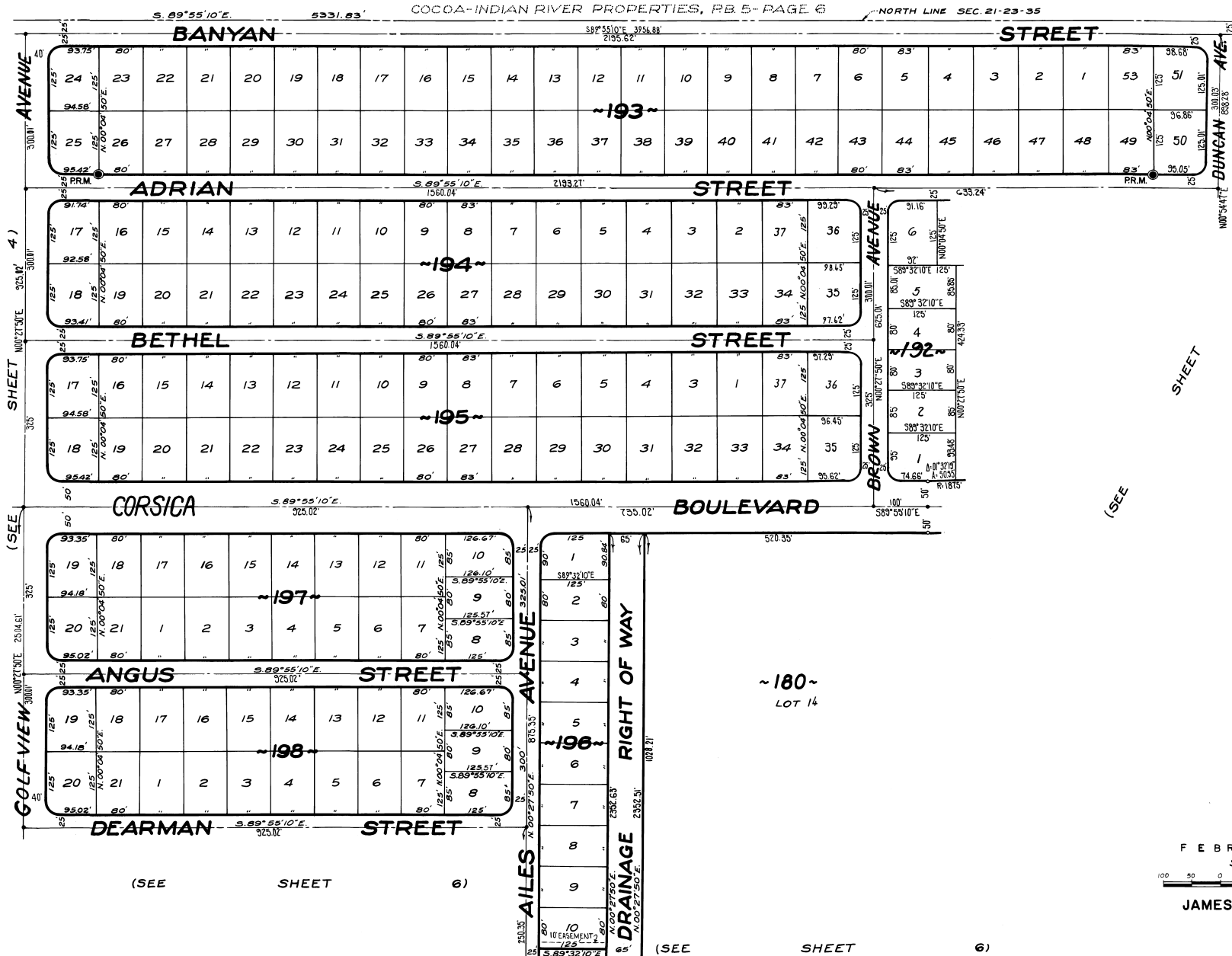


PORT ST. JOHN UNIT --- SIX

PLAT BOOK 23
AND PAGE 55

A SUBDIVISION OF PORTIONS OF SECTIONS 20 & 21, TWP. 23 S.-RGE. 35 E. AND
A RESUBDIVISION OF PORTIONS OF MAP OF DELESPINE. PLAT BOOK 2 - PAGE 2
ALL IN
BREVARD COUNTY, FLORIDA



SHEET NO. 2130 E. 325.87' 4)

(SEE SHEET NO. 2130 E. 234.61')

(SEE SHEET

FEBRUARY - 1970
Scale: 1" = 100'

JAMES EDWARD CLARK
CIVIL ENGINEER
MIAMI-FLORIDA

CALC. BY: M.A.M.
DRAWN BY: E.L.
CHECKED BY: M.A.M.
APPROVED BY: CT

SHEET 3 OF 7 SHEETS
182 LOTS THIS SHEET