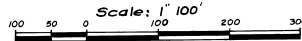


NORTH PORT ST. JOHN UNIT -- THREE

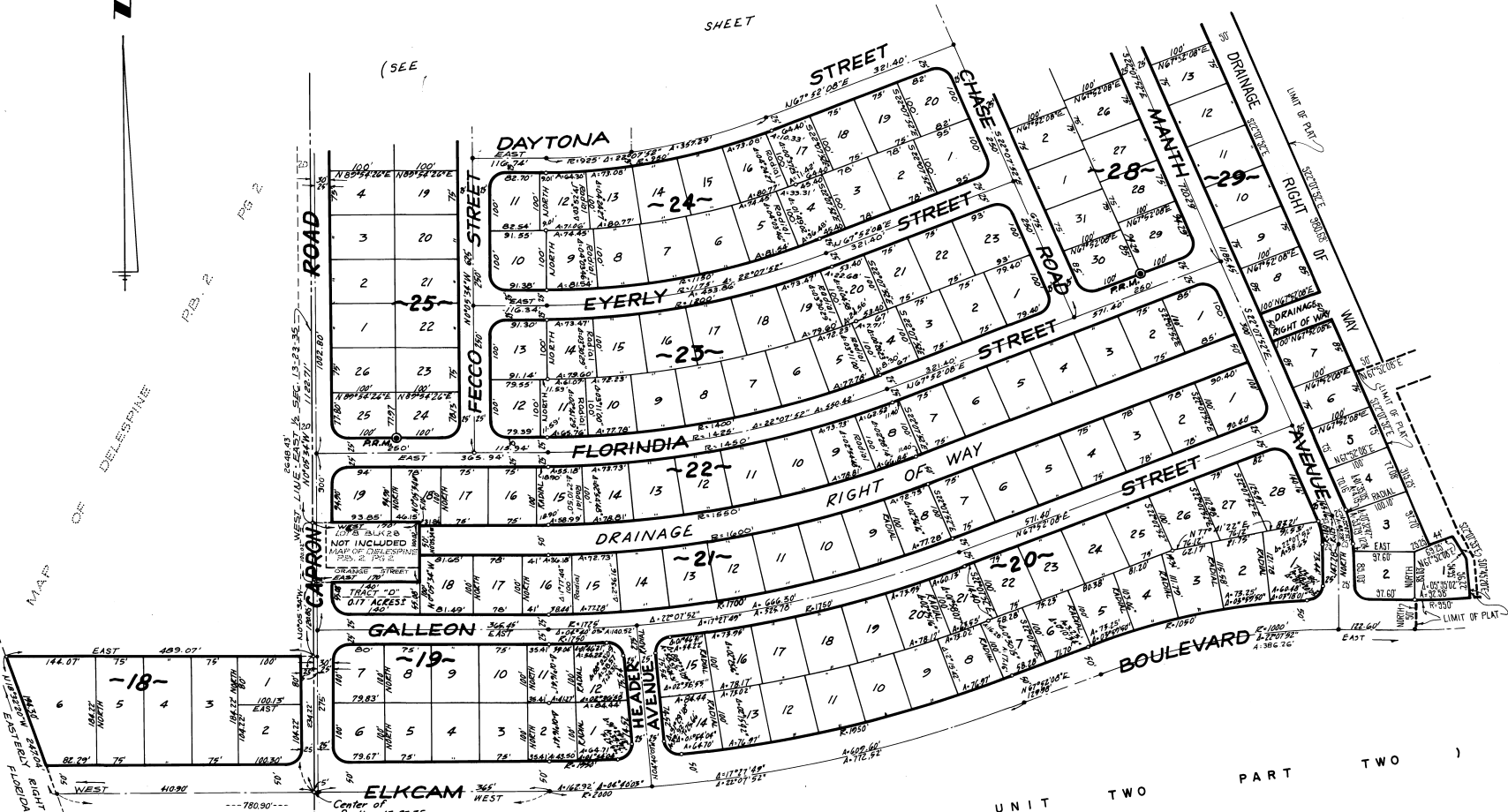
A RESUBDIVISION OF A PORTION OF MAP OF DELESPINE, PLAT BOOK 2, PAGE 2,
SECTION 13, TOWNSHIP 23 SOUTH, RANGE 35 EAST
BREVARD COUNTY - FLORIDA



SHEET 3 OF 3 SHEETS

SHEET

N



MAP OF DELESPINE

MAP OF DELESPINE
WEST LINE 1/2 SEC. 13-23-35
EAST LINE 1/2 SEC. 13-23-35
NORTH LINE 1/2 SEC. 13-23-35
SOUTH LINE 1/2 SEC. 13-23-35

NORTH

PORT

ST.

JOHN

UNIT TWO

PART

TWO

PGS. 26 - 27

P. B. 18

CALCULATED BY: MAM
DRAWN BY: AS
CHECKED BY: GL, MAM
APPROVED BY: CT

JAMES EDWARD CLARK
CIVIL ENGINEER
MIAMI, FLORIDA