

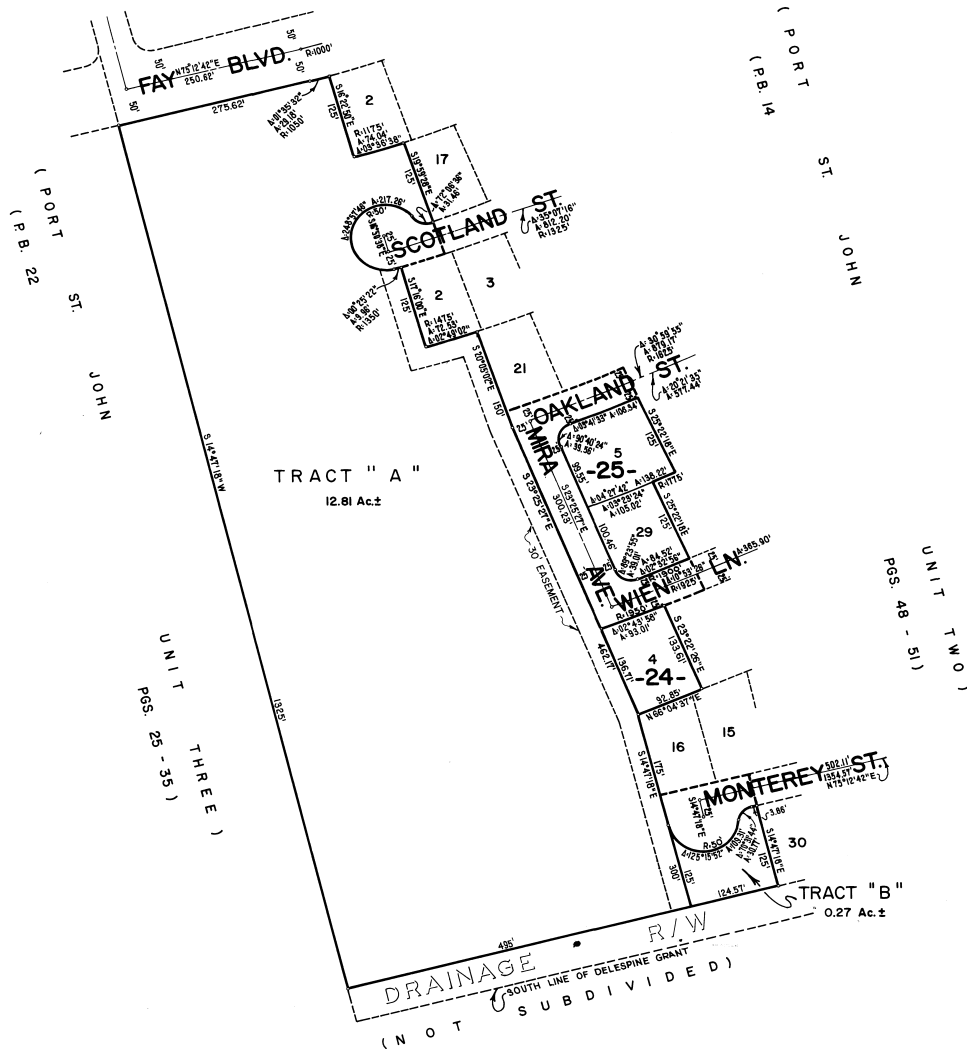
FIRST REPLAT
IN

PORT ST. JOHN UNIT - TWO

SECTION 24, TOWNSHIP 23, SOUTH, RANGE 35, EAST
BREVARD COUNTY, FLORIDA

SHEET 2 OF 2 SHEETS

(PORT ST. JOHN UNIT TWO)
(P.B. 14 PGS. 48 - 51)



CALCULATED BY KC
DRAWN BY [Signature]
CHECKED BY CBT
APPROVED BY CBT

JAMES EDWARD CLARK
CIVIL ENGINEER
MIAMI - FLORIDA

SHEET 2 OF 2 SHEETS
3 LOTS THIS SHEET