

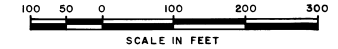
PORT MALABAR UNIT FIFTY

A SUBDIVISION OF A PORTION OF
SECTIONS 17 & 18, TOWNSHIP 29 SOUTH, RANGE 37 EAST
CITY OF PALM BAY,
BREVARD COUNTY, FLORIDA

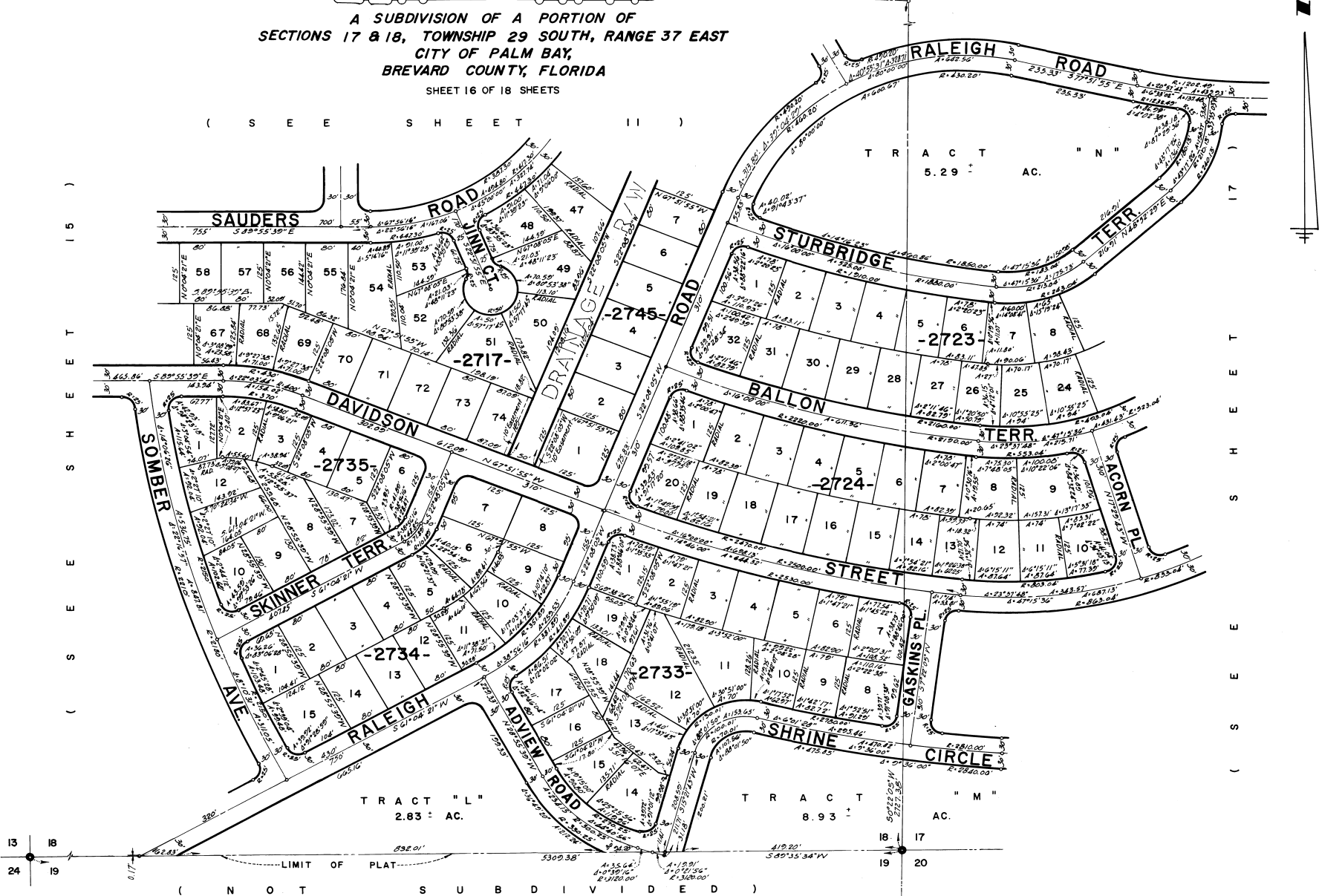
SHEET 16 OF 18 SHEETS

(S E E S H E E T I I)

PLAT BOOK 23
AND PAGE 19



(S E E S H E E T I I)



13 18
24 19

7 8
18 17
19 20

(N O T S U B D I V I D E D)

CALCULATED BY W.T.
DRAWN BY H.S.-M.P.
CHECKED BY E.R.B.
APPROVED BY *CT*

JAMES EDWARD CLARK
CIVIL ENGINEER
MIAMI - FLORIDA

SHEET 16 OF 18 SHEETS
110 LOTS THIS SHEET